

QUEENSLAND RECONSTRUCTION AUTHORITY

Monthly Report

April 2014

A decorative graphic in the bottom right corner of the page, consisting of several overlapping, radiating lines in various shades of maroon and red, creating a sense of depth and movement.

Document details:

| | |
|---|-------------------------------------|
| Security classification | Public |
| Date of review of security classification | April 2014 |
| Authority | Queensland Reconstruction Authority |
| Author | Chief Executive Officer |
| Document status | Final |
| Version | 1.0 |

Contact for Enquiries:

All enquiries regarding this document should be directed to:

Queensland Reconstruction Authority

*Phone the call centre - **1800 110 841***

Mailing Address

Queensland Reconstruction Authority

PO Box 15428

City East Q 4002

Alternatively, contact the Queensland Reconstruction Authority by emailing info@qldra.org.au

Licence

This material is licensed under a [Creative Commons - Attribution 3.0 Australia licence](#).



The Queensland Reconstruction Authority requests attribution in the following manner:

© The State of Queensland (Queensland Reconstruction Authority) 2011-2014

Information security

This document has been classified using the [Queensland Government Information Security Classification Framework \(QGISCF\)](#) as PUBLIC and will be managed according to the requirements of the QGISCF.

Message from the Chief Executive Officer

Major General Richard Wilson AO
Chairman
Queensland Reconstruction Authority

Dear Major General Wilson

It is with pleasure that I present the April 2014 Monthly Report – the 38th report to the Board of the Queensland Reconstruction Authority (the Authority).

The Authority was established under the *Queensland Reconstruction Authority Act 2011* following the unprecedented natural disasters which struck Queensland over the summer months of 2010-11. The Authority is charged with managing and coordinating the Government's program of infrastructure renewal and recovery within disaster-affected communities, with a focus on working with our State and local government partners to deliver best practice expenditure of public reconstruction funds. Following the widespread damage caused by ex-Tropical Cyclone Oswald in early 2013, the jurisdiction of the Authority was expanded by the *Queensland Reconstruction Authority Amendment Bill 2013* to cover this and other 2013 disaster events.

The April report is provided as the State once again responds to a significant disaster event, Tropical Cyclone Ita, which crossed the coast near Cape Flattery as a Category 4 cyclone late on 11 April and moved down the North Queensland coast as a Category 1 system before shifting out to sea three days later. The damage from the event and its impact on the remaining program of works across the Far North and North Queensland region is yet to be fully assessed and will be reported in future reports.

The Authority's regular estimates review process at February 2014 was practically complete when Tropical Cyclone Ita hit. The review is undertaken on a regular basis and involves a complete review of the program of each local government authority (LGA) and State agency for works arising from disaster events managed by the Authority.

The April report provides an update on the progress of the program of works managed by the Authority based on the preliminary February 2014 review of damage estimates completed prior to this recent event. The estimates will be revised and finalised during April as the impact of Tropical Cyclone Ita is assessed. Prior to reflecting the impact of Tropical Cyclone Ita, the program of works for all events actively managed by the Authority (2009 to 2014) was preliminarily revised from \$13.96 billion to \$13.74 billion.

As at 31 March 2014:

- an additional \$356 million in submissions have been received by the Authority since last month
- an additional \$538 million has been processed by the Authority since last month
- a cumulative value of \$10.95 billion of the preliminary \$13.74 billion works program (2009 to 2014) has been reported to the Authority as being in progress or delivered by delivery agents as at 28 February 2014.

The April report also provides an update on the progress of a number of key reconstruction projects, including Brisbane's RiverWalk and the Bongaree Seawall Betterment projects. It also profiles the recent recognition at The Government Procurement Professional Awards for North Burnett Regional Council's procurement of its massive program of NDRRA works arising from the 2013 flood events; and provides an example of how the NDRRA program is delivering ancillary benefits to local communities - the provision of recycled road base to Miriam Vale's rugby league club has both improved the view of the action for spectators and provided a sustainable and cost-effective solution to disposing excess material from nearby NDRRA works.

I commend the report to you and recommend its release to the Minister and the public pursuant to Section 41 of the *Queensland Reconstruction Authority Act 2011*.

Yours sincerely



Graeme Newton
Chief Executive Officer
Queensland Reconstruction Authority

Contents

| | |
|--|-----------|
| 1.0 Introduction | 1 |
| 1.1 Background | 2 |
| 1.2 Purpose | 2 |
| 1.3 Timing | 2 |
| 2.0 Disaster Assistance | 3 |
| 2.1 Queensland Disaster Assistance Framework | 4 |
| 2.2 Disaster assistance by event period | 5 |
| 2.3 Events managed by the Authority | 6 |
| 2.4 Additional assistance measures | 7 |
| 2.4.1 Betterment fund | 7 |
| 2.4.2 Other assistance measures | 7 |
| 3.0 Program Status | 8 |
| 3.1 Recent developments | 9 |
| 3.2 Combined program status | 9 |
| 3.3 Looking forward | 9 |
| 3.4 State-wide pipeline of works | 10 |
| 3.5 Program of works expenditure | 11 |
| 3.6 State-controlled roads and highways | 12 |
| 3.7 Betterment fund status | 13 |
| 4.0 Progress Reports | 14 |
| 4.1 Iconic projects in reconstructing Queensland | 15 |
| 4.2 Program spotlights | 18 |
| 5.0 Communications | 21 |
| 5.1 Communicating progress | 22 |
| 5.2 Media reports | 23 |
| <u>Appendices</u> | |
| Appendix A: Local Government Areas by Region | 25 |

Section one:
Introduction



1.0 Introduction

1.1 Background

Queensland has been struck by a series of unprecedented natural disasters in recent years. Between November 2010 and April 2011, extensive flooding caused by periods of extremely heavy rainfall, destruction caused by a number of storm cells including Cyclones Tasha, Anthony and Severe Tropical Cyclone Yasi and subsequent monsoonal flooding, resulted in all of Queensland being declared as disaster affected.

On 21 February 2011 in response to the 2011 disaster events, the Queensland Government established the Queensland Reconstruction Authority (the Authority) under the *Queensland Reconstruction Act 2011*. The Authority's role was subsequently extended to cover historical and continuing disaster events in Queensland.

The Authority has since been given responsibility to administer Natural Disaster Relief and Recovery Arrangements (NDRRA) for the large scale natural disaster caused by Tropical Cyclone Oswald in late January 2013 and additional events which have occurred in the 2013 and 2014 disaster event periods. The *Queensland Reconstruction Authority Amendment Bill 2013* was passed on 14 February 2013 to expand the jurisdiction of the Authority to include the 2013 events.

1.2 Purpose

The Authority's mission is **to reconnect, rebuild and improve Queensland communities and its economy**.

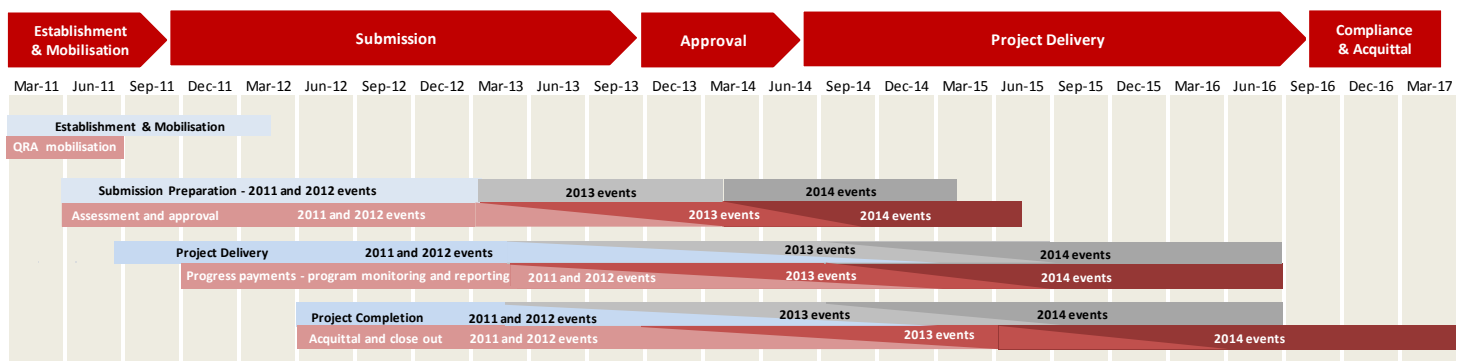
The Authority is charged with managing and coordinating the Government's program of infrastructure renewal and recovery within disaster-affected communities, with a focus on working with our State and local government partners to deliver best practice expenditure of public reconstruction funds.

The Authority operates with reference to recovery and reconstruction plans established by the State in response to the 2011 disaster events and more recently following Tropical Cyclone Oswald. The Queensland 2013 Flood Recovery Plan (Recovery Plan), approved on 25 February 2013, provides strategic guidance for the coordination and management of recovery, reconstruction and community resilience activities undertaken across the State after Tropical Cyclone Oswald.

1.3 Timing

The Authority's priorities are currently assisting councils and State agencies to progress their remaining program of works from the 2011 and 2012 disaster periods, with the bulk of the reconstruction work occurring prior to June 2014. Concurrently, the Authority is assisting with the acceleration of the 2013 and 2014 programs of works into project delivery phase as soon as practicable.

With the period to deliver works for the 2010 disaster period now complete (at 30 June 2013), the Authority is currently closing out the balance of the program of works for the 2010 event and later events which have reached completion.



Section two:
Disaster Assistance

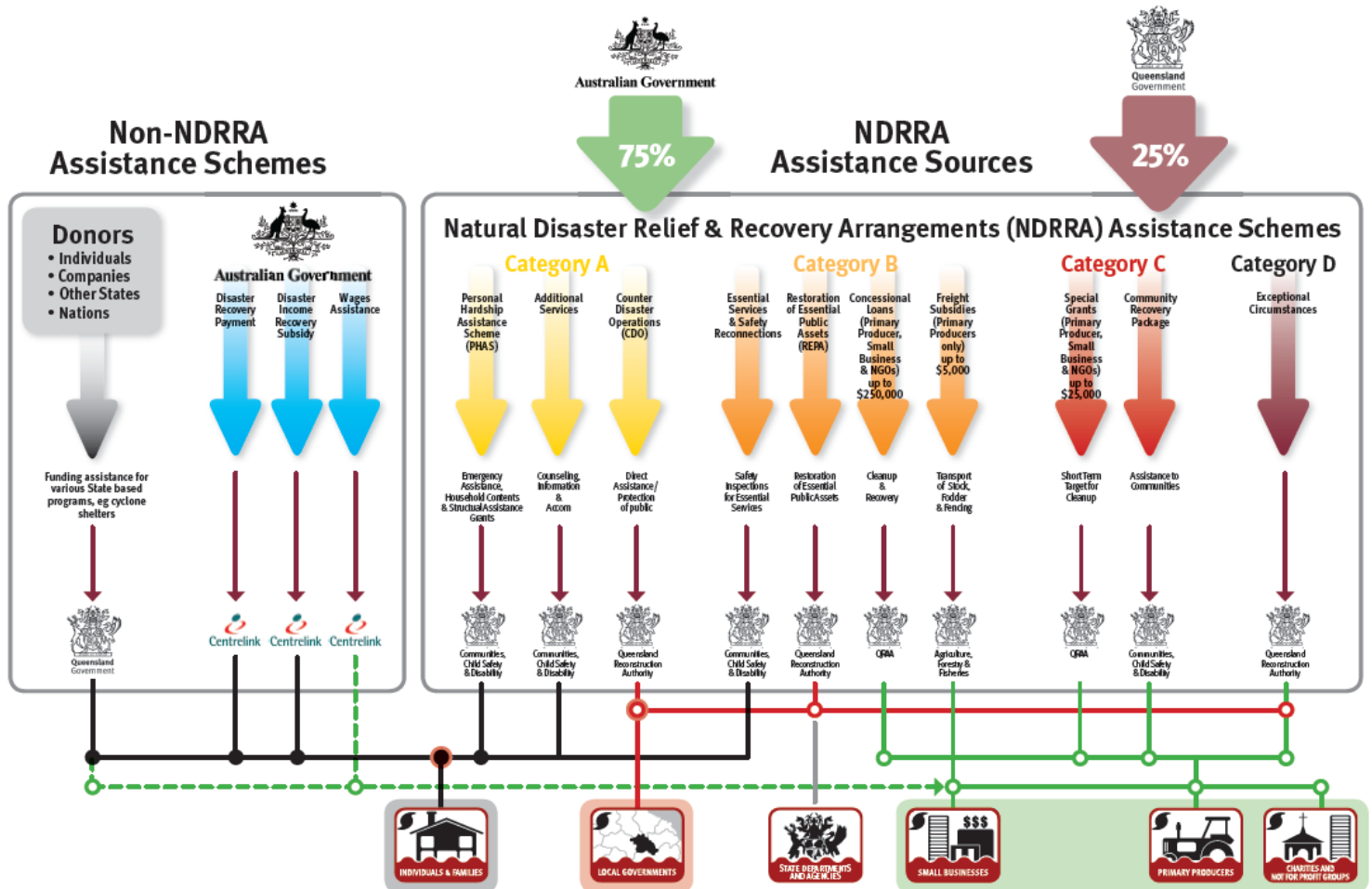


2.0 Disaster Assistance

2.1 Queensland Disaster Assistance Framework

The available Queensland Disaster Assistance schemes are separated between NDRRA (jointly funded by the Commonwealth and State governments) and Non-NDRRA funding schemes. The diagram below indicates the different elements of assistance available and how each element operates.

Figure 2.1.1 Queensland Disaster Assistance Framework



Whilst elements of the assistance schemes are delivered by other State agencies, all of the NDRRA assistance sources (and elements of the non-NDRRA assistance schemes) are administered by the Authority for historical and continuing disaster events in Queensland.

Disaster events managed by the Authority

The list of the activated disaster events managed by the Authority are set out in **Section 2.3** and can also be found on www.disaster.qld.gov.au.

The maps opposite show the LGAs activated for relief measures under NDRRA for each event period under the Queensland Disaster Assistance Framework.

This report includes references to event periods described as follows:

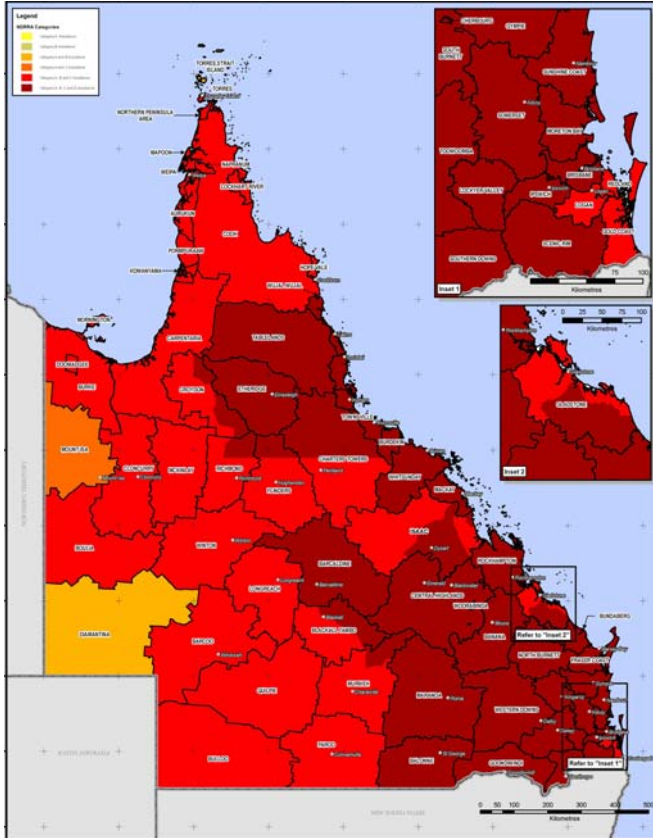
- **2014 events:** Activated disaster events managed by the Authority which occurred in the financial year ended **30 June 2014**
- **2013 events:** Activated disaster events managed by the Authority which occurred in the financial year ended **30 June 2013**, including Tropical Cyclone Oswald and associated rainfall and flooding (January 2013)
- **2012 events:** Activated disaster events managed by the Authority which occurred in the financial year ended **30 June 2012**
- **2011 events:** Activated disaster events managed by the Authority which occurred in the financial year ended **30 June 2011**, including Tropical Cyclone Yasi and Queensland flooding (November 2010 to February 2011)
- **2009-2010 events:** Activated disaster events managed by the Authority which occurred prior to 30 June 2010
- **Combined Program:** relates to all the activated disaster event programs managed by the Authority.

2.0 Disaster Assistance

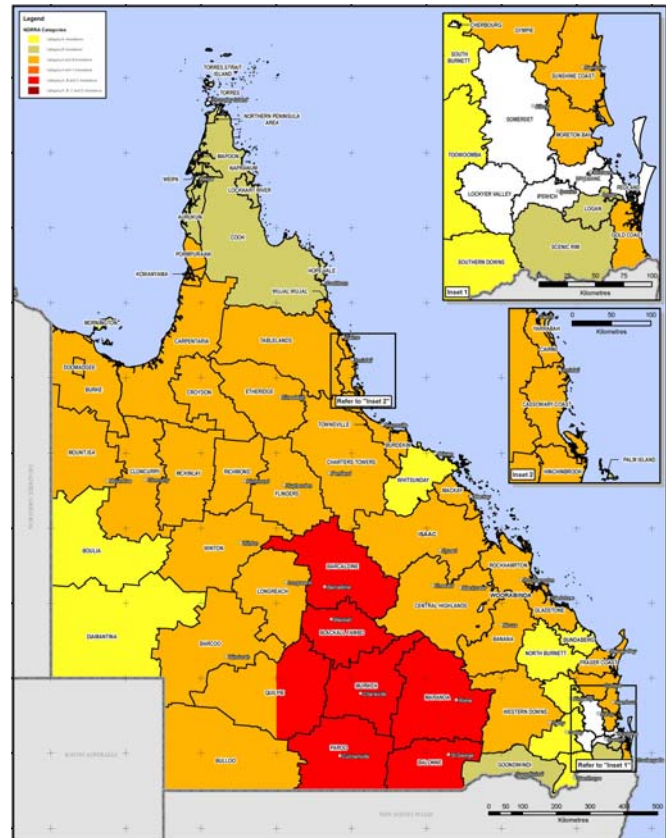
2.2 Disaster assistance by event period

The maps below show the LGAs activated for relief measures under NDRRA for each event period managed by the Authority under the Queensland Disaster Assistance Framework.

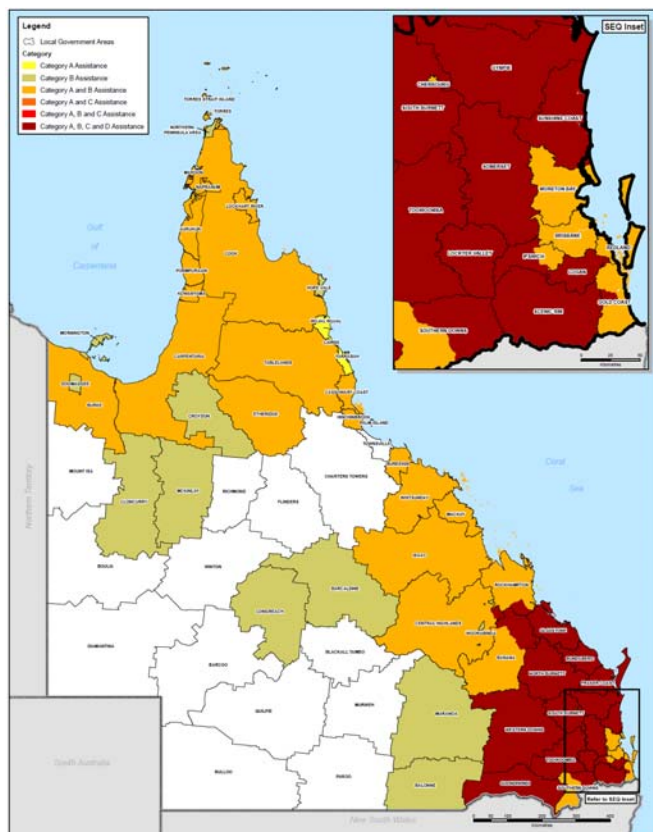
Map 1 - LGAs disaster activated under NDRRA for 2011 events



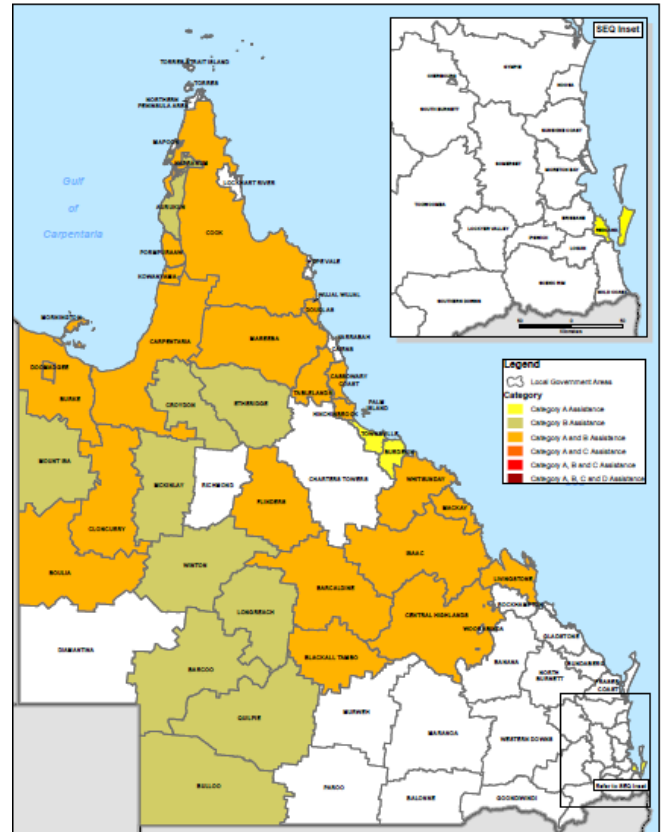
Map 2 - LGAs disaster activated under NDRRA for 2012 events



Map 3 - LGAs disaster activated under NDRRA for 2013 events



Map 4 - LGAs disaster activated under NDRRA for 2014 events



2.3 Events managed by the Authority

The Authority has responsibility to administer NDRRA relief measures for historical and continuing disaster events in Queensland. The Authority currently manages and coordinates the infrastructure reconstruction and recovery for 23 disaster events activated for NDRRA relief measures since the Authority's establishment in February 2011 and the remaining program of works for an additional 16 disaster events which occurred prior to the Authority's establishment.

During March, there has been additional activations for NDRRA financial assistance for the existing *Central and Western Queensland Flooding & Rainfall, 18 to 28 February 2014* and *North East Queensland Monsoonal Rainfall and Flooding, 7 to 9 February 2014* events. Since month end, the *Tropical Cyclone Ita and associated rainfall and flooding, 11 - 14 April 2014* event has also occurred and will be reported as an activation in the May 2014 report.

2014 events:

- Central and Western Queensland Flooding & Rainfall, 18 - 28 February 2014
- North East Queensland Monsoonal Rainfall and Flooding - 7 to 9 February 2014
- Tropical Cyclone Fletcher, commencing 2 February 2014
- Tropical Cyclone Dylan, 31 January 2014
- North Stradbroke Island Fires, commencing 29 December 2013

2013 events:

- South West Queensland Wildfires, 21 December 2012
- Far Northern Queensland Bushfires, late October - December 2012
- Tropical Cyclone Oswald and Associated Rainfall and Flooding, 21-29 January 2013 *
- Longreach Flood, 18 February 2013 #
- Central and Southern Queensland Low, 25 February - 5 March 2013 #

2012 events:

- Queensland Bushfires, August to October 2011
- Localised Heavy Rainfall Northern Queensland, October 2011 *
- Southern Queensland Flooding, November to December 2011*
- South East Queensland Heavy Rainfall and flooding, 23- 26 January 2012 *
- Western Queensland Tropical Low, 27 January to February 2012 *
- Far Northern Queensland Tropical Low, 3-4 February 2012 *
- North Coast Queensland Storms and flooding and East Coast Hybrid Low, 24 February - 7 March 2012 *
- Northern and Far Northern Queensland Heavy Rainfall & flooding, 15 March 2012 *
- East Coast Low, 22 March 2012 *

The maps opposite show the LGAs activated for relief measures under NDRRA for each event period managed by the Authority under the Queensland Disaster Assistance Framework.

* Events covered under the National Partnership Agreement for Natural Disaster Recovery and Reconstruction (NPA) between the State and Commonwealth Government signed 8 February 2013 (NPA Events).

Pending agreement to extend the NPA to include two additional 2013 events - Longreach Floods, 18 February 2013 and Central and Southern Queensland Low, 25 February - 5 March 2013.

2011 events:

- Queensland Flooding and Tropical Cyclones Tasha and Anthony, November 2010 to February 2011*
- Severe Tropical Cyclone Yasi on 2 February 2011*
- Queensland Monsoonal Flooding Event, 8 February 2011*
- South West Flooding, April 2011*

2007-2010 natural disaster events managed by the Authority that have open submissions for damage:

- South East and North Coast Queensland East Coast Low, August 2007
- South West Queensland storms and flooding, 23-30 November 2007
- Central Western Queensland storms and flooding, 22-30 December 2007
- South East Queensland East Coast Low, 27 December 2007 - 7 January 2008
- Queensland Monsoonal flooding, January 2008
- Queensland Monsoonal flooding, February March 2008
- South West Queensland flooding, June 2008
- Queensland storms and associated flooding, 16-22 November 2008
- Queensland Monsoonal flooding and Tropical Cyclone Charlotte and Ellie, January - February 2009
- South East Queensland Low, May 2009
- Queensland Bushfires, September - October 2009
- South West Flooding, 20 - 25 November 2009
- Northern, Central and South West Queensland Flooding, 22 December 2009 to 8 January 2010
- Queensland Monsoonal Flooding and Tropical Cyclones Olga, Neville, Ului and Paul, January to April 2010
- South West Queensland Low and Associated Flooding, September 2010
- 2010 South East Queensland Flooding, 9-12 October 2010.

2.4 Additional assistance measures

The State Government in conjunction with the Commonwealth have activated a range of jointly-funded Category C, Category D and other relief measures to alleviate distress due to the impact of Tropical Cyclone Oswald and the 2011 events. The measures are summarised below:

2.4.1 Betterment fund

On 8 February 2013, the Queensland Government signed the National Partnership Agreement (NPA) with the Commonwealth Government which recognised the need for a more streamlined process for the approval of Betterment funding. The Queensland Government announced a \$40 million commitment to Betterment funding which will match the Commonwealth Government contribution, resulting in the establishment of the \$80 million Betterment Fund.

In August 2013, the Betterment fund was extended beyond its original coverage of LGAs declared for NDRRA assistance for Tropical Cyclone Oswald to also cover LGAs declared for the two additional disaster events that occurred through to June 2013 (Longreach Flood (18 February 2013) and Central and Southern Queensland Low (25 February to 5 March 2013)). The Betterment fund is available for the restoration or replacement of essential public assets to a more disaster resilient standard than their pre-disaster standard. The intent of betterment is to increase the resilience of communities to natural disasters, while at the same time reducing future expenditure on asset restoration, reducing incidents, injuries and fatalities and improving asset utility during and after disaster events.

Where a damaged asset is approved as a betterment project, the normal cost of restoring or replacing the asset to its pre-disaster standard will continue to be funded under Category B of NDRRA assistance and the incremental cost to 'better' the asset to a more disaster-resilient standard will be financed from the Betterment fund. The status of the Betterment fund is set out in Section 3.7 of this report.

2.4.2 Other assistance measures

Tropical Cyclone Oswald

- **Community Recovery Package - \$5 million** - Funding for community development officers in the hardest hit communities of Bundaberg and North Burnett, support for mental health services and a flexible fund that assists communities to implement engagement and development activities.
- **Clean Up and Recovery program - \$10 million** - Program to assist primary producers to clear debris and restore fencing in the worst affected areas; to maintain workers while income generating activities are reduced and to clear debris from watercourse that poses a hazard to downstream infrastructure and activities.
- **Industry Recovery Officers - \$1.5 million** - Placement of Industry Recovery Officers to assist business and primary producers recover from flooding.
- **Enhanced concessional loans and grants** - Loans of up to \$650,000 (with a grant component of up to \$50,000) are available to applicants that have suffered extreme damage such that the existing concessional loan and recovery grants under NDRRA category B and C are insufficient to support recovery.
- **Environmental Recovery program - \$10 million*** - Program to fund existing programs to conduct flood specific clean up and soil conservation work following the 2013 flooding.
- **Rural Financial Counselling Services - \$1.5 million*** - Provision of financial planning advice for rural businesses and primary producers to assist in the recovery of local economies following the disaster.
- **Other measures - \$4.9 million** to fund dredging works to restore Bundaberg Port to its pre-2013 flood clearance depths; and **\$900,000** to assist Bundaberg Regional Council meet the cost of recovery works for community parks and gardens.

2011 events

- **Queensland Local Council Package - \$315 million** - Funding to help local councils repair utilities and infrastructure, and support their efforts in recovering from the floods and Cyclone Yasi. The package comprises two components: \$265 million to fast-track the repair of damaged infrastructure, including the Strengthening Grantham project, Brisbane ferry terminals and Riverwalk; and \$50 million to contribute to regional and remote councils employing people to perform important clean-up and repair work.
- **Cassowary Coast Support Package - \$15 million** - Funding to restore vital council infrastructure and restore natural vegetation and beach damage in the Cassowary Coast region. Specifically, the Support Package provides for the repair of Dunk Island Jetty, the repair of Clump Point Jetty and the restoration of Cardwell beach foreshore and its natural vegetation.
- **Exceptional Disaster Assistance Scheme** - Concessional interest loans of up to \$650,000, with grant component of up to \$50,000, to eligible businesses, primary producers and not-for-profit organisations that suffered extreme damage.

In addition, the State Government and Commonwealth have agreed to an extended Day Labour Trial, which enables councils to deliver restoration works with their own workforce on condition that they provide evidence of savings in both time and cost.

* Non-NDRRA measures funded 50% by the State and 50% by the Commonwealth; Commonwealth share is being delivered directly through existing Commonwealth programs.

Section three:

Program Status



3.0 Program Status

3.1 Recent developments

Following month end, the *Tropical Cyclone Ita and associated rainfall and flooding, 11 - 14 April 2014* event has occurred and the Authority is currently assisting affected Councils with their recovery efforts and initial assessments of damage. The damage from the event and its impact of the cyclone on the remaining program of works across the Far North and North Queensland region is yet to be fully assessed.

The Authority's regular estimates review process at February 2014 was practically complete when Tropical Cyclone Ita occurred and, accordingly, the revised estimates remains preliminary pending finalisation of the impact of this recent event. The review process involves a complete review of the program of each LGA and State agency for works arising from disaster events managed by the Authority. Further details are provided in Section 3.2 below.

The Authority is also currently progressing the close out of the balance of works from the 2010 event period and completed works from later event years for acquittal to the Commonwealth.

3.2 Combined program status

Given its recent occurrence, estimates are not yet available for Tropical Cyclone Ita although it is expected to result in revisions to the estimated value of the program managed by the Authority. The February 2014 estimates set out in this report are preliminary and will be updated for the effect of Tropical Cyclone Ita prior to finalisation of the review process during April 2014.

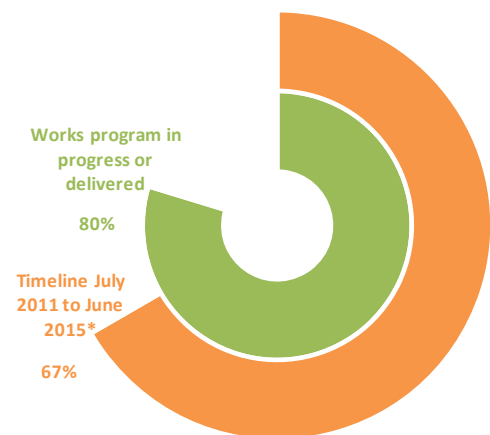
Prior to reflecting the impact of Tropical Cyclone Ita, the program of works for all events actively managed by the Authority (2009 to 2014) was preliminarily revised from \$13.96 billion to \$13.74 billion.

The preliminary revised program includes estimates for the five 2014 events which occurred since the last review was undertaken at September 2013 (but prior to Tropical Cyclone Ita) as well as revised estimates for completion of the remaining 2011 to 2013 event works. The estimated cost of the damage from the 2014 events (prior to Tropical Cyclone Ita) is \$284 million, the damage from the 2013 events has been revised to \$2.35 billion and the cost of the 2011 and 2012 events are estimated to be \$6.86 billion and \$1.74 billion respectively. Ahead of final acquittal of the relevant programs, the final cost of works for the 2009 and 2010 events managed by the Authority is estimated to be \$2.51 billion.

Since the last report, the combined program of works for all events managed by the Authority has progressed as follows:

- a cumulative value of \$16.7 billion in submissions have been received by the Authority to 31 March 2014, representing an increase of \$356 million since last month
- a cumulative total of \$15.1 billion has been processed by the Authority to 31 March 2014, representing an increase of \$538 million since last month
- a cumulative value of \$10.95 billion of the preliminary revised \$13.74 billion works program (2009 to 2014) has been reported to the Authority as being in progress or delivered by delivery agents as at 28 February 2014.

Figure 3.2.1 Combined program progress (preliminary)



3.3 Looking forward

The Authority is currently focused on actively assisting affected Councils with their recovery efforts and initial assessments of damage following Tropical Cyclone Ita.

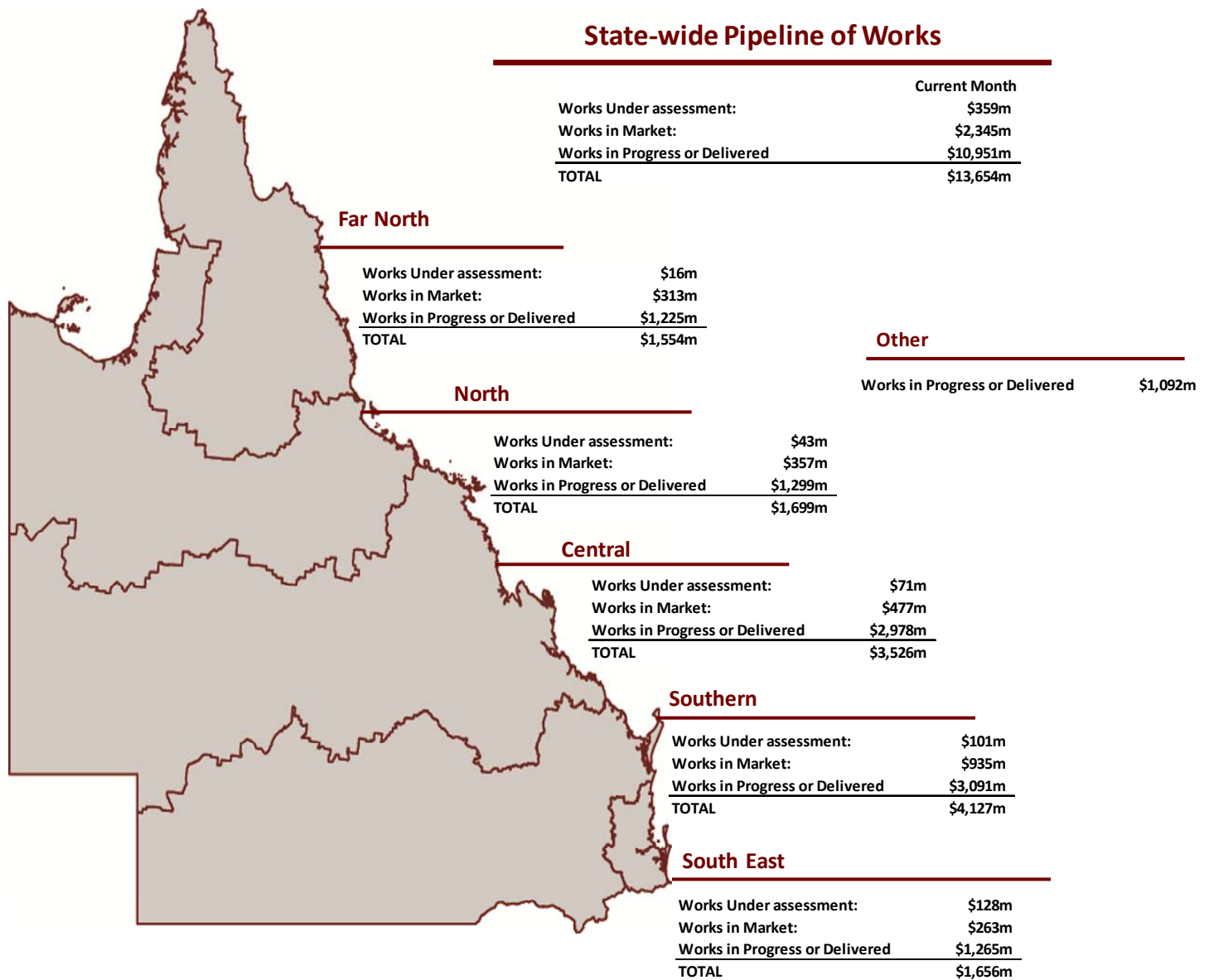
The Authority is also focused on both closing out the balance of 2010 event and other works completed in the 2012/13 financial year for acquittal to the Commonwealth, and actively assisting councils and State agencies to progress their remaining program of works.

The deadline of 30 June 2014 is approaching for delivery agents to incur NDRRA-eligible expenditure on the bulk of works arising from the events of 2011 and 2012 and the Authority is assisting delivery agents complete their remaining program of works from these significant event years. Concurrently, the Authority is assisting the collection of data and acceleration of the 2013 and 2014 programs of works through project delivery phase as soon as practicable.

* Proportion of allowable time passed for delivery of 2010 to 2013 program to data reporting date of 28 February 2014 since 1 July 2011 (following the Authority's establishment) based on final delivery date of 30 June 2015 for 2013 program. 2014 program will have additional 12 months to 30 June 2016 for completion of eligible works beyond reported timeline.

3.4 State-wide pipeline of works

The Pipeline of works for events actively managed by the Authority (2009 to 2014) has a preliminary estimated program value of \$13.74 billion (prior to reflecting the impact of Tropical Cyclone Ita), the status of which is set out below.



Note:

1. Works Under Assessment and Works in Market represents data as at 28 February 2014 (DTMR) and 31 March 2014 (LGAs and Other). Works in Progress or Delivered represents spend by delivery agents to 28 February 2014 as reported to the Authority at 31 March 2014. Additional works have been conducted but are yet to be reported to the Authority
2. Other encompasses SDAs other than DTMR as well as the 2011 and 2013 Other Assistance.

Pipeline of Works Definitions

| Stage | Description |
|--------------------------------|--|
| Works under Assessment | Applications for packages which are currently under assessment by the Authority or are awaiting additional information from the applicant. |
| Works In Market | Estimate of spend remaining on works in progress and packages which have been approved by the Authority and are in the tender or contract process. |
| Works in Progress or Delivered | Expenditure as reported to the Authority on packages in progress or delivered. |

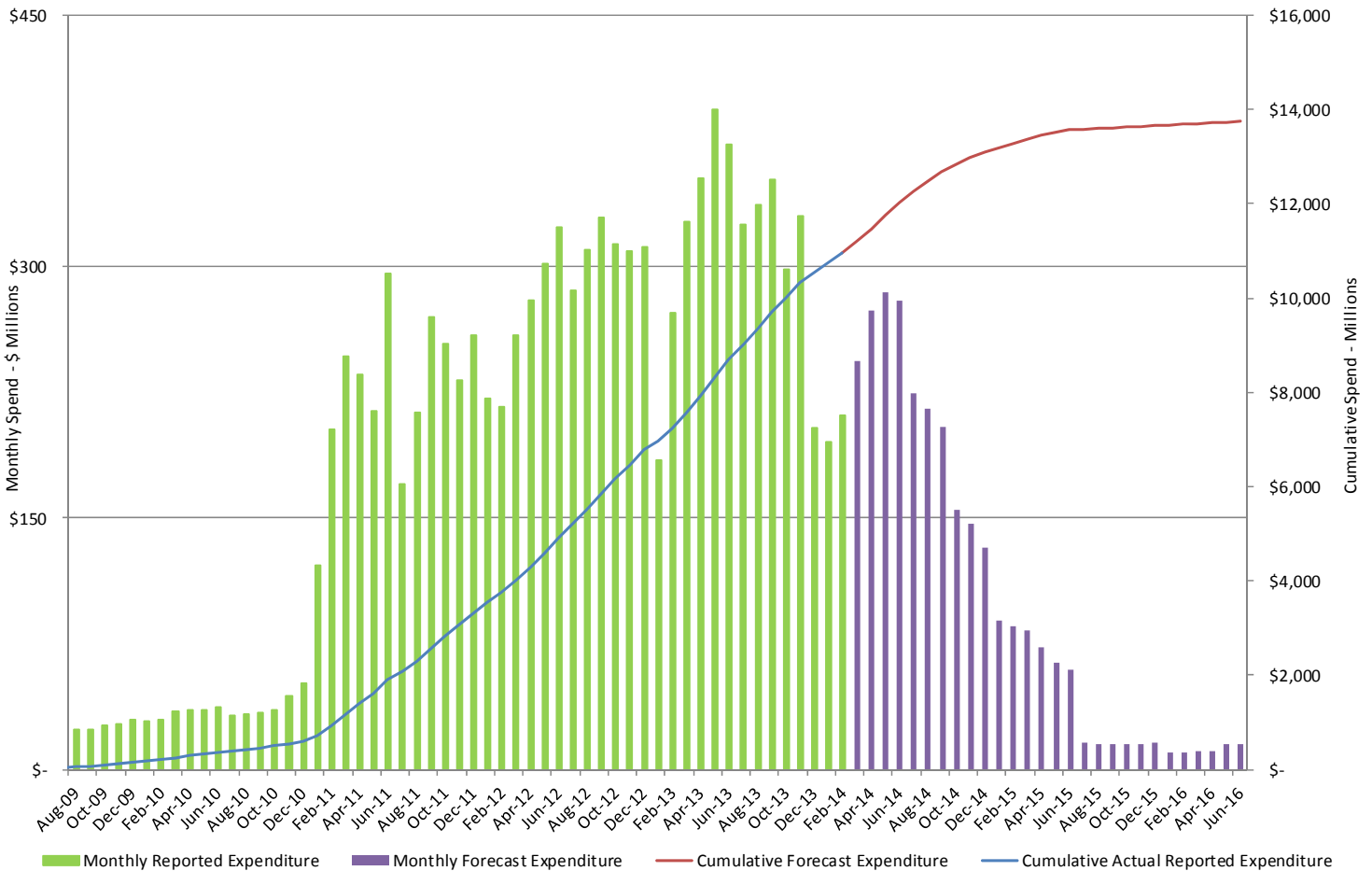
Source: DTMR at 28 February 2014; and the Authority at 31 March 2014

3.5 Program of works expenditure

The figures below represents the monthly reported expenditure and estimated costs on a combined basis for events managed by the Authority (2009 to 2014). The estimates costs to complete are preliminary and will be updated once the impact of Tropical Cyclone Ita is assessed.

Since the last report, the graphs have been extended to 30 June 2016 to incorporate the allowable delivery timeframe for the 2014 Events program. Preliminary estimates for the 2014 Events (excluding Tropical Cyclone Ita) are included in the program following the February 2014 estimates review.

Figure 3.5.1 Combined Program of Works - monthly expenditure (preliminary)



Source: the Authority - cumulative expenditure by delivery agents to 28 February 2014 as reported to the Authority at 31 March 2014; and preliminary program estimates per 28 February 2014 NDRRA Review

3.6 State-controlled roads and highways

DTMR's Transport Network Reconstruction Program (TNRP) manages the recovery and reconstruction of Queensland's integrated transport system to reconnect Queensland communities and economies following the damage from natural disaster events in 2010, 2011, 2012 and 2013.

DTMR's reconstruction program as a result of the natural disasters of 2014 is currently being scoped and will be provided in future reports.

The transport system includes state-controlled roads, ports, navigation aids and the rail network.

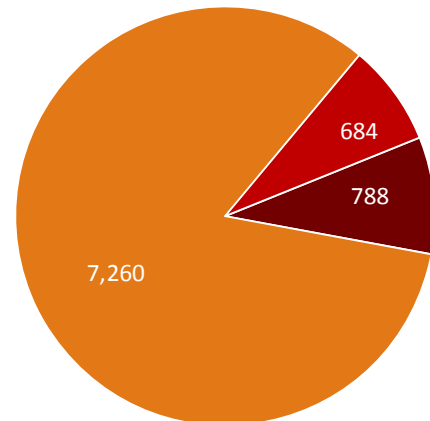
The current state of activity*:

- Roads** – \$4.8 billion of projects have been completed for both recovery and reconstruction works (excluding maritime infrastructure) for works resulting from the disaster periods of 2010 to 2013 and \$1.4 billion of reconstruction works are currently underway. Of the 8,732km of roads which DTMR plans to reconstruct following damage from the 2010 to 2013 natural disaster events, 7,260km had been reconstructed to 28 February 2014. A further 684km of road is under construction on active works contracts. *See Figure 3.6.1 and TNRP Summary map.*
- Rail** – 3,100km (43%) of Queensland Rail lines were closed or had limited access due to the natural disaster events in early 2013, and all have been recovered and services resumed.
- Maritime** – repairs have been required to navigation aids, jetties and other boating infrastructure following natural disasters from 2010 to 2013. The events of 2013 affected seven ports (all of which have since been reopened without restriction) and damaged or destroyed 348 aids to navigation, of which 347 have since been recovered and 1 temporarily fixed.

Key achievements:

- During February 2014, DTMR expended approximately \$135 million on reconstruction works across the State arising from natural disaster events between 2011 and 2013. The cumulative spend on reconstruction of the transport network to 28 February 2014 is \$5.6 billion for works resulting from the 2010 to 2013 disaster periods.
- There was 172km of damaged roads reconstructed in February 2014 bringing the total reconstructed since the program commenced to 7,260km of the total 8,732km damaged roads which DTMR plans to reconstruct from the 2010 to 2013 events*.
- Construction commenced on 24 projects valued at \$42 million in February 2014 including works on the Kennedy Developmental Road between Hughenden and Winton, three projects on the Dalby-Cooyar Road, Gore Highway and Mount Sylvia Roads, and eleven 2013 projects in the Wide Bay/Burnett Region.
- Construction was completed on 30 projects valued at more than \$150 million in February 2014 including three projects on the Gore Highway (Toowoomba-Millmerran) on the Darling Downs, Warrego Highway at Minden Flats (Metropolitan Region) and Hervey's Range Road in Northern Region.
- In February, DTMR provided close to 10,300 stakeholder notifications about reconstruction works and more than 300 customer enquiries were responded to. The majority of information provided related to project updates, property access and start of construction.

Fig.3.6.1 Roads damaged/reconstructed - 2010 to 2013 events*



- Roads (km) to be reconstructed - works yet to commence
- Roads reconstructed (km)
- Roads under construction (km)



Above: stabilising works underway on the Bruce Highway (Benaraby to Rockhampton), south of Mt Larcom - February 2014

* values include kms and costs to reconstruct works from damage caused by events in 2010, 2011, 2012 and 2013. Reporting on scope and cost of reconstruction works from 2014 events will be provided in future reports following finalisation of TMR's reconstruction program for 2014 events.

Fig.3.6.2 TNRP summary of reconstruction works to date - February 2014

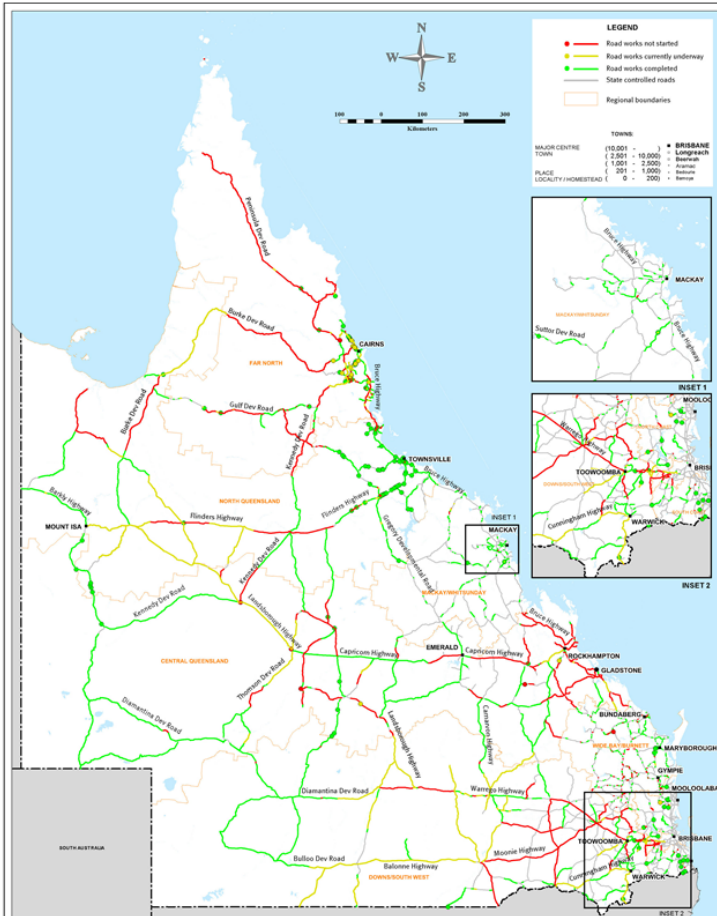
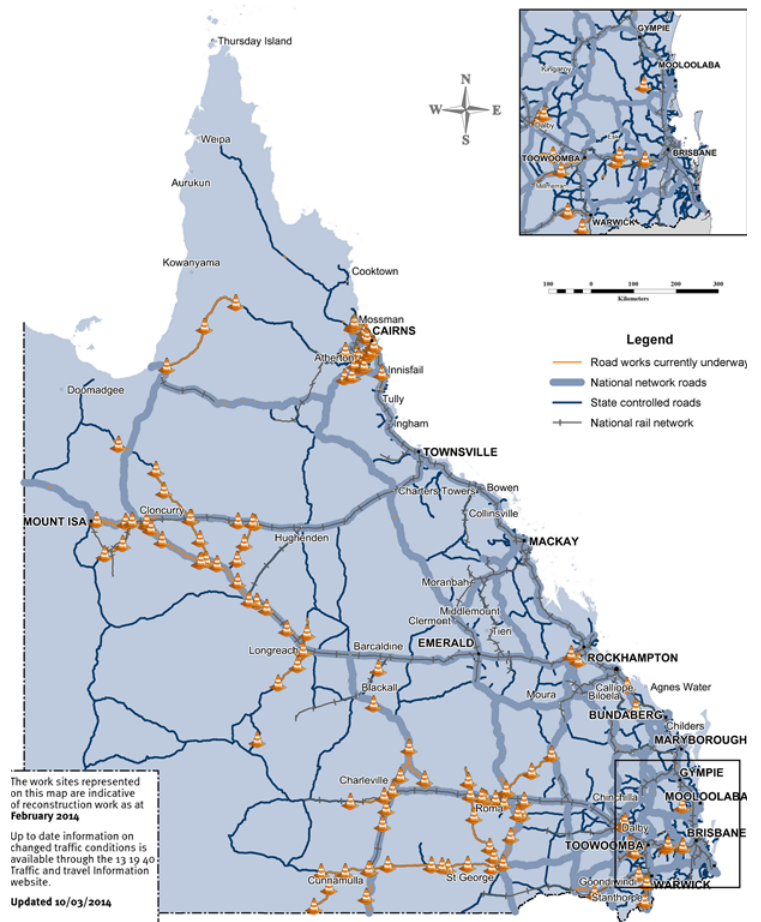


Fig 3.6.3 TNRP reconstruction work sites - February 2014



(Source: DTMR 28 February 2014)

3.7 Betterment fund status

The \$80 million Betterment fund is a Category D relief measure available to LGAs that have been declared for NDRRA assistance for the flood, storm and cyclone disaster events that occurred in Queensland in early 2013 for the restoration or replacement of essential public assets to a more disaster resilient standard than their pre-disaster standard.

The Betterment Fund was announced in February 2013 following Tropical Cyclone Oswald which caused damage to many of the assets which had been repeatedly damaged and restored from earlier disaster events. Correspondence was received from the Commonwealth in August 2013 agreeing to an extension of the Betterment fund to also cover LGAs declared for the two additional disaster events that occurred after Oswald through to June 2013 - Longreach Flood (18 February 2013) and Central and Southern Queensland Low (25 February to 5 March 2013).

Status

Expressions of Interest (EOI) were received by the Authority from 48 councils with approximately \$1 billion worth of Betterment projects to improve the resilience of infrastructure to natural disasters. Under the Betterment Framework, in addition to the normal NDRRA submission assessment process, the Authority considered the financial and non-financial benefits of the betterment proposal such as possible prior damage, loss of availability and its impact on economic or social factors of the community.

The majority of the Betterment Fund has now been allocated to approved projects. As at 31 March 2014, 220 projects with a betterment component have been approved. These projects have an estimated total cost of approximately \$152 million, which includes \$78.5 million in Betterment funding and Council contributions of \$12 million.

To date, works have commenced and are substantially progressed on a number of approved Betterment projects, including Round Hill Road (Gladstone Regional Council); Gayndah Water Intake plant (North Burnett Regional Council); the Bongaree Seawall on Bribie Island, the Margate Foreshore, Pringle Road and Wirth Road (Moreton Bay Regional Council); and One Mile Bridge (Ipswich City Council). Projects have also commenced in the Bundaberg, Cherbourg, Hinchinbrook, Moreton Bay, South Burnett, North Burnett and Palm Island local government areas.

A progress report on the Bongaree Seawall Betterment project is provided in Section 4.

Section four: Progress Reports



4.1 Iconic projects in reconstructing Queensland*

| Project | Value (\$m) | Description | Status |
|------------------------------|-------------|--|--|
| BCC Riverwalk (Cat D) | \$72.0 | <p>The Brisbane Riverwalk was a unique pedestrian and bicycle path which linked the city's CBD with the inner suburb of New Farm. It also provided a direct link with tertiary education, entertainment, recreation, commercial, community and residential precincts in the inner city.</p> <p>The floating infrastructure was destroyed by the January 2011 floods and the whole structure was subsequently removed.</p> <p>Following detailed public consultation, the Brisbane City Council decided to replace the previously floating walkway with a fixed, jetty-like 850 metre long structure between New Farm and the CBD. The Riverwalk deck will be approximately 3.4 metres above the average high tide level, high enough to minimise corrosion caused by salt water.</p> <p>The walkway's 37 piles will be anchored into the riverbed, providing the structure with a strong, more flood-resilient foundation. It will feature 24 hour lighting, separate pedestrian and cyclist paths and shaded rest areas. The design also included a rotating opening span to allow for the passage of vessels to and from moorings.</p> <p>Funding for the project is being provided through special (Category D) funding under NDRRA arrangements.</p> | <p>The tender to rebuild the Riverwalk was awarded to the John Holland Construction Group in April 2013.</p> <p>Piling works commenced in late July 2013 with a 55m-long barge mobilised in the Brisbane River carrying a 280-tonne crane and a piling rig. Since this time, two additional barges have been mobilised - a second piling barge commenced in February 2014 and a barge dedicated to installing the girders is also now operational.</p> <p>Since works commenced, 23 of the 37 piles have been poured and 20 of 30 concrete girders have been cast on-site at the works compound beneath the Story Bridge.</p> <p>During March, an additional four of the pre-cast concrete girders were installed. By month end, seven of the girders had been placed.</p> <p>Construction of both the north abutment at the Howard Smith Wharf end and the south abutment at the Merthyr Road end is underway. Completion of the Riverwalk is expected in mid-2014, weather permitting.</p> |



Above: Riverwalk is now taking place with seven girders installed

Right: Work on the reinforcement for the girders



(Courtesy: Brisbane City Council)

* Iconic projects represent projects that may be complex or of great significance to the local community.

4.1 Iconic projects in reconstructing Queensland (continued)

| Project | Value (\$m) | Description | Status |
|---|-------------|--|---|
| Gore Highway, Toowoomba to Milmerran | \$66 | <p>The Gore Highway is a vital transport route linking Toowoomba to Goondiwindi and forms part of the National Highway's Melbourne to Brisbane link. The highway provides access for B-double and road trains travelling interstate and also serves as an important link for the diverse agricultural sector in the area.</p> <p>Many sections of the Gore Highway sustained flood damage to pavements and roadside drainage, as well as severe erosion around culverts in the flood events of 2010-2011 and early 2013.</p> <p>The reconstruction works include shoulder reinstatement, pavement repairs and rehabilitation and bitumen resurfacing along sections of the highway between Toowoomba and Millmerran, as well as repairs to culverts and roadside drainage.</p> | <p>Works on the Gore Highway is expected to be completed in April 2014, after 17 months of construction and the delivery of repairs for the 2010, 2011 and 2013 flood events.</p> <p>The reconstruction of the Gore Highway has been one of the largest project in terms of kilometres repaired among the 172 flood-related projects on the Darling Downs since the 2011 natural disaster.</p> <p>At the peak of the project there were 122 local personnel working on the project, and more than 70 pieces of heavy plant.</p> |



Sealing works in progress and following completion on two sections of the Gore Highway, east of Milmerran

| | | | |
|---------------------------------|-------|--|---|
| Grigor Bridge, Conondale | \$4.5 | <p>Grigor Bridge is a major crossing of the Mary River on the Maleny-Kenilworth Road near Conondale, in the Sunshine Coast hinterland. The original single-lane timber Grigor Bridge was built in 1929 and was extensively damaged during flooding in October 2010 and again in January 2011.</p> <p>The total project comprises \$4.5 million of NDRRA funding representing the estimated cost of replacing the original structure, and more than \$5 million complementary funding for an additional lane and raising the bridge plus embankments and culverts. The complementary works are intended to improve flood immunity, safety and traffic capacity.</p> <p>Construction activity in the river is scheduled to accommodate the breeding cycles of a number of iconic species found in the Mary River including the Mary River Turtle and Mary River Cod.</p> | <p>The new Grigor Bridge opened to traffic on 17 February 2014.</p> <p>The new "bat boxes" installed prior to the opening of the new bridge have been a success, with about 30 bats already roosting under the new bridge.</p> <p>All pavement and seal works on both approaches are now complete. Demolition of the original timber bridge was also completed in March.</p> <p>The project, including removal of the side track used during construction, is on track for completion by June 2014.</p> |
|---------------------------------|-------|--|---|

Right: stripping of the deck as part of the removal of the original Grigor timber bridge, March 2014



4.1 Iconic projects in reconstructing Queensland (continued)

| Project | Value (\$m) | Description | Status |
|---|-------------|--|---|
| Bongaree Seawall, Bribie Island (Cat B and Cat D) | \$2.8 | <p>The Bongaree Seawall protects the coastal community of Bongaree on the western side of Bribie Island in the Moreton Bay region.</p> <p>Extreme storm surges as a result of ex-Tropical Cyclone Oswald in January 2013 caused significant erosion of the sand at the base of the wall damaging the foundation and causing almost 200 metres of the wall to collapse. The damage undermined the footpath and road adjacent to the seawall.</p> <p>The restoration and betterment works include demolishing the existing wall and constructing a stepped concrete seawall in front of the existing shallow skirt, to protect the slab during erosion events. The stepped seawall design will also incorporate vinyl sheet piles at the toe of the wall to increase the wall's resilience.</p> <p>Rock from the demolished wall will be buried to form additional protection to the toe of the wall and wall drains and barriers will be included in the stepped seawall design to allow free drainage, which will help reduce pressure behind the wall and also reduce the risk of settlement and voids forming beneath the stepped wall.</p> <p>The estimated cost of the project is \$2.8 million, of which \$450,000 is eligible for NDRRA Category B funding, \$1.9 million is being funded from the Betterment Fund and Moreton Bay Regional Council is contributing \$465,000 towards the works.</p> | <p>The project is being delivered in two stages, with the first stage comprising the near 200 metre reconstruction of the collapsed seawall; and stage two the extension of the project to the 242 metre southern section of the seawall.</p> <p>The works have been awarded to Auzcon Pty Limited, a local Queensland based construction company.</p> <p>The first stage is underway with 80% of the project already complete. Completion of Stage One is expected by the end of April 2014, weather permitting.</p> <p>Stage Two of the project is expected to start in early May 2014 and is expected to take approximately six months to complete. The entire project is expected to be complete by October 2014, weather permitting.</p> |



Left: damage to Bongaree Seawall, Bribie Island following storm surges associated with January 2013 disaster event



Right: Construction progress on the new stepped seawall, part of Stage one of the Bongaree Seawall - March 2014



4.2 Program spotlights



Damage to (top and centre) and following reconstruction works (bottom) to sections of Bluff Jellinbah Road

Central Highlands Regional Council Bluff Jellinbah Road

Bluff Jellinbah Road in the Central Highlands region runs north west from the township of Bluff (pop. 370), approximately 90km east of Emerald on the Capricorn Highway. The gravel road services the rural community in the district and provides an alternate access onto the Burnell haul road servicing both the Jellinbah and Yarrabee Mines - both major employers in the region - and is subjected to a great deal of heavy vehicle traffic.

The remote nature of Bluff Jellinbah Road ensures that any repairs from damage inflicted by natural disasters require contractors to travel exceptional distances to the work sites, increasing costs for Council. An attributing factor to this is the both the low level and high cost of accommodation in both Bluff and Blackwater.

Bluff Jellinbah Road suffered damage at multiple sites along its 22km length during the flooding events of November and December 2010. Damage included washouts causing the loss of pavement formation, deep scouring, rutting and potholing. Council was approved for restoration works to restore the loss of the gravel pavement.

Council's decision to use its internal labour force to carry out the works rather than external contractors has seen the final expenditure for the project reduced by almost 25% to \$284,000 when compared to the recommended value. Based on the day labour model presented by Council, an approximate final value to complete these works through the use of contract labour only would be more than \$350,000.

"Being able to use our available resources has certainly provided a great outcome for this project," said Mayor Peter Maguire. "The remote location would have been a challenge for contractors, and our own crews were able to deliver the work quicker and cheaper than if we'd got in someone external to do it for us."

"It just makes sense for us to do it this way, it's a much more flexible option," he said.

DTMR

Recycled road base kicks goals for Miriam Vale club

Miriam Vale rugby league supporters will be able to get a bird's eye view of Miriam Vale Magpies' games following delivery of recycled road base to create raised mounds for sideline spectators to view the action.

The material was recovered from DTMR's reconstruction works on the Bruce Highway. These works follow the 2010, 2011 and 2012 events and involved removing sections of damaged road pavement and carrying out pavement repairs and drainage works.

The material was delivered to the Miriam Vale Rugby League Club home ground in Miriam Vale by DTMR's contractor, Abigroup.

Beau Hancock, Miriam Vale Rugby League Club President, said that since the floods, the community had worked hard to improve the club's facilities. "The recycled spoil from roadworks has been used as the base for new spectator viewing mounds, which were recently put to the test at our pre-season trial games," Mr Hancock said.

Abigroup representative Brent Wadham said the team was happy to deliver the recycled materials to help the community facility. "It provided an opportunity to help out the local sporting club while also providing a sustainable and cost-effective solution to dispose of excess material," Mr Wadham said.

Road reconstruction works in the Miriam Vale area resulting from the 2010, 2011 and 2012 events are expected to be largely completed in March 2014.



Abigroup representative Brent Wadham with Miriam Vale Rugby League Club President, Beau Hancock

4.2 Program spotlights (continued)

North Burnett Regional Council 2013 event procurement strategy recognised with State Procurement Award

North Burnett Regional Council was recently presented with the Local Buy State Procurement Award for Collaboration during The Government Procurement Professional Awards held in Brisbane on 4 March 2014, recognising the significant contribution that staff made towards procurement and project delivery within the Local Government Sector.



Above: North Burnett Mayor, Don Waugh and Minister for Local Government, Community Recovery and Resilience, The Hon David Crisafulli inspect the Gayndah Water Intake, a 2013 event NDRRA Betterment Fund project

Left: Council's Manager Special Projects, Justin Kronk (left) with Chief Executive Officer, Mark JP Pitt (right) displaying the Certificate and Award for Collaboration received during The Government Procurement Professional Awards

North Burnett Regional Council sustained more than \$100 million in flood damage from the 2013 flood events with reconstruction and repair required to more than 500 rural roads and town streets, replacement of two bridges, reconstruction or replacement of three town water intakes and reconstruction and repairs to park infrastructure.

The value of work required is in excess of three times Council's ordinary annual operation budget and is required to be completed within the relatively short timeframe of two years to qualify for NDRRA funding.

Council acknowledged the scale of the procurement and project delivery challenge that it faced in comparison to its normal operations and established its NDRRA Operations Team in March 2013 to co-ordinate the restoration of Council's damaged assets. Council also established a Project Management Committee which comprised of the Mayor, Deputy Mayor, Councillor (with Infrastructure portfolio), CEO, Council Directors and the Queensland Reconstruction Authority's Regional Liaison Officer. The committee meets once per month and is provided with detailed reporting of both the procurement strategy and the project delivery.

Throughout the procurement process Council employed the services of external consultants to provide guidance and advice to ensure the integrity of the procurement process. Council engaged Local Government Infrastructure Services for general procurement and contracting advice, Local Buy for probity services and GHD for technical and engineering advice.

In conjunction with its consultants, Council has procured 11 contracts worth over \$71 million realising savings to the approved values allocated for the works. The first Expression of Interest was released to the market in April 2013 with the final contract being awarded on 19 December 2013.

As an additional benefit, Council will retain the information and knowledge gained within the process for its normal operational uses following the completion of the project delivery through the involvement of Council staff on secondment within the NDRRA Operations team. This will ensure that the efficiencies and improvements gained will not only be realised in the current project but will be ongoing for Council in future projects.

4.2 Program spotlights (continued)

Douglas Shire Council Bloomfield River Crossing takes shape

The Bloomfield Crossing crosses the Bloomfield River on Cape Tribulation Road at the township of Wujal Wujal, approximately 160km north of Cairns. The crossing is a vital road link to Cairns for the communities of Wujal Wujal and Cooktown, further to the north.

The crossing also provides the only pedestrian link across the river for local residents and school children. During times of rainfall, water can overlap the causeway, increasing the risk of injury from vehicle contact, as well as attacks from saltwater crocodiles, that are known to frequent the area.

In February 2011, the crossing was completely washed away in the wake of the Cyclone Yasi disaster event. In the immediate aftermath of the event, residents had to be transported across the river by SES boats until the crossing was temporarily recovered while a more permanent solution was developed.

A new bridge across the flood-prone river has been under consideration for decades. Rather than rebuild a permanent causeway in the same location with the high prospect of being washed away again, funding has been pooled to build a road/pedestrian concrete bridge. The project will improve safety, provide greater flood immunity and require less ongoing maintenance, facilitating improvements to the health and social well-being of the Wujal Wujal community.

NDRRA funding has been applied to the temporary recovery of the crossing and the cost that would have been incurred to reconstruct the causeway to its previous standard, while a range of other sources, including the Nation Building Program (jointly funded by the Australian Government and Queensland Government), will provide the majority of funding of more than \$5 million to construct the upgraded bridge crossing.



Above: Damage to the Bloomfield Crossing following Cyclone Yasi, 2011 (top); and the mighty Bloomfield Falls in full flood (bottom). The falls are about 1.5km upstream from the project site.

Construction of the new bridge commenced in September 2013.

Heavy monsoonal rainfall, flooding and king tides have continued to challenge the project team, with seven separate flood events cutting the existing causeway since the start of the year. Notably, none of these floods have inundated the new bridge.

To date, 27 of the 54 deck units have been lifted into place on spans 1, 2 and 3, which marks the halfway point of their installation. Crews are also continuing to construct the reinforced concrete cross girders, which will sit in between the deck units and deck slabs. A total of 96 are required to complete the project, of which 20 are now complete.

Construction will soon commence on the six steel-reinforced concrete deck slabs, which will sit atop each of the new bridge's six spans and anchor the safety rail and pedestrian balustrade. Concrete expands and contracts with the changing temperatures in the tropics, so an expansion joint will be installed into the deck slab at each pier to allow it to shift without stressing and cracking.

The progress of works is expected to ramp up as the weather dries, with construction currently on track for completion of this essential link in mid-2014, weather permitting.

Left: Construction in progress of the new Bloomfield Bridge (top); and the construction site with standing floodwaters—February 2014 (bottom)

(Photos courtesy ABC, Wujal Wujal Police, DTMR)



**Section five:
Communications**



5.0 Communications

The Authority is focused on building stakeholder confidence in the reconstruction by ensuring consistent and regular communication of public information.

5.1 Communicating progress

Media analysis

There has been a total of 239 media items in March 2014 (129 print – 54%, 33 TV – 14%, 77 radio – 32%), which reached a cumulative audience of over 6.5 million people, with the focus this month being on flood mitigation, council recovery and betterment projects.

March media coverage saw mentions for regions recovering and rebuilding from natural disasters across Queensland, including articles in the Central and North Burnett Times, Daily Mercury, Dalby Herald, Gatton Lockyer Brisbane Valley Star, Gympie Times, Herbert River Express, High Country News, Queensland Country Life, Queensland Times, Rockhampton Morning Bulletin, South Burnett Times, Toowoomba Chronicle and Roma Western Star; TV coverage on Channel 10 Brisbane and the WIN and Seven networks throughout the State; and radio mentions on 4BC and ABC North Queensland.

The Betterment Fund received coverage for projects in Etheridge, Lockyer Valley, Ipswich and Toowoomba with articles appearing in regional media including the Queensland Country Life, WIN Toowoomba, Queensland Times, and the Toowoomba Chronicle.

The announcement of flood mitigation funding in early March saw substantial press and TV coverage throughout regional Queensland.

The **Queensland Governor, Penelope Wensley** toured the reconstruction progress since Cyclone Yasi of Cardwell on Monday 17 March. The visit attracted coverage in the Herbert River Express, Tully Times, Channel 10 Brisbane, and ABC North Queensland.

Engagement activities

On 7 March, **Minister for Local Government, Community Recovery and Resilience, David Crisafulli**, and **Queensland Reconstruction Authority Chief Executive Officer, Graeme Newton**, visited Townsville to inspect their reconstruction progress. During the visit, **Minister Crisafulli** announced funding of approximately \$47 million and called for expressions of interest for flood mitigation projects to help communities be better prepared to avoid the worst effects of the next floods.

Minister Crisafulli also visited Roma during March to inspect work on the town's flood levee before going on to officially open St George's recently completed levee. **Minister Crisafulli** also headed to North Queensland to meet with representatives from the State's 16 indigenous councils and attended Community Cabinet on the Gold Coast.

In late March, **Minister Crisafulli** and **Mr Newton**, travelled to Gympie, Gayndah and Bundaberg to discuss future flood mitigation projects and reconstruction works including inspecting progress at the Gayndah Water Intake and Gayndah Mundubbera Road betterment projects.

Communications

There are a number of methods available to the public to communicate with the Authority.

The Authority's website provides information to the public and continues to be enhanced with ongoing updates, including information about Betterment projects. There has been a large number of visits to the website since it was launched on 18 February 2011. At 31 March 2014, total website visits amounted to 410,105 - an increase of 1.6% since last month. *(See Figure 5.1.1)*

In March, the Authority received an additional 32 calls to its dedicated hotline and 415 additional pieces of written correspondence were received. *(See Figure 5.1.2)*

Fig. 5.1.1 Website traffic

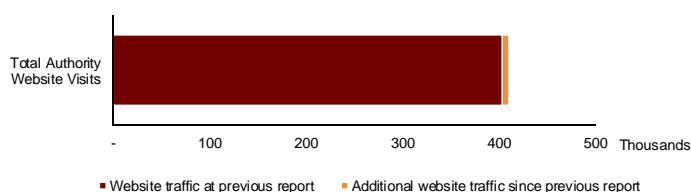
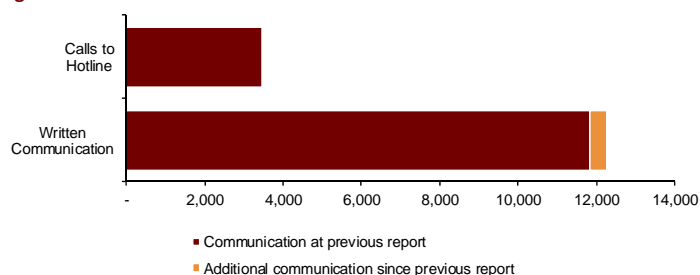


Fig. 5.1.2 Communications



(Source: the Authority at 31 March 2014)

5.2 Media reports

Better days ahead for Oak Park Crossing

WORK is scheduled to start next month on \$1.2 million worth of upgrades to repair and raise the Oak Park Crossing over the Coppinford River, a vital stock route about 250 kilometres south-east of Goondiwindi.

Community Recovery and Resilience Minister David Crisafulli said the project was part of the Queensland government's promise to deliver better infrastructure throughout the state.

The work has been approved under Queensland's Betterment Fund, a state government initiative jointly funded with the federal government, to stop the waste of rebuilding the same infrastructure in the same position to see it wash away again in the next flood.

In the floods of 2010, Oak Park Crossing was extensively damaged, repaired, and

then suffered the same damage again in the 2013 floods. "Mr Crisafulli said, "It may cost a little more in the short term to do the job to a higher standard, but in the long haul it will save Queenslanders money by rebuilding flood-damaged public infrastructure in a smarter way that makes it more resilient."

The project, with Etheridge Shire Council contributing \$111,687, will install a series of reinforced concrete box culverts at the crossing to raise the level of the approaches and increase the flow capacity of floodwaters.

Upgrades will also include concrete cut-off walls and aprons and both approaches being reconstructed with cement then strengthened with a two-coat bitumen seal.

Etheridge Shire Council Mayor Will At-

wood said there was a great deal of community goodwill surrounding the project with local graziers helping the contractor establish a suitable site for a base camp on their land and other generous offers of help.

"The new culverts are scheduled to be delivered to site shortly and the contractor is in the process of establishing a base camp in close proximity to the site, with work to commence as soon as weather permits," Mr Atwood said.

Mr Crisafulli said about 10,000 cattle were moved across this causeway each year making Oak Park Road a vital piece of infrastructure for the region.

Once completed, these works will allow primary producers to send their livestock to market in all weather.

Queensland Country Life, 20 March 2014

Funding floods in State bolsters plans

ANTHONY TEMPLETON

NORTH Queensland infrastructure regularly smashed by cyclone and floods could be upgraded within the year as part of a \$47 million state government program to flood-proof Queensland.

The \$47 million betterment fund will be used to improve infrastructure which has been destroyed in natural disasters.

It will be funded from local government grants, the Royalties for the Regions scheme and the Natural Disaster Resilience Program.

Community Recovery and Resilience Minister David Crisafulli said he wanted local councils to apply for the funding to get the projects underway within a year.

"We have a desire to see Queensland to be the most disaster resilient state in the country," he said.

"If we don't take this win-

dow now we will kick our selves for a generation."

Mr Crisafulli said several projects in Townsville will meet the criteria to receive grant funding.

"There's certainly some projects I would like to see get done even some in my electorate," he said.

"Building a levee around North Queensland won't stop a cyclone, but projects such as upgrading drainage will make a big difference locally."

Mr Crisafulli said the \$47 million wasn't enough to flood-proof Queensland but would help improve the resilience of many communities.

Queensland Reconstruction Authority chief executive Graeme Newton said over the past few years natural disasters had caused billions of dollars of damage right across the state.

"The one lesson we have learned is prevention is better than a cure."

Townsville Bulletin, 8 March 2014

Emotional Cardwell visit for Queensland Governor

THE Queensland Governor Penelope Wensley felt "very emotional" when she saw the reconstruction of Cardwell on Monday.

The Governor travelled to Cardwell to celebrate their 150th birthday and to see the seaside town's recovery since Cyclone Yasi.

"As someone who visited Cardwell within just a couple of days after Yasi had smashed it to smithereens I felt very emotional going back in," she said. "Seeing the enormous transformation that has been achieved and the foreshore is magnificent, it is stunning

and will clearly help to draw tourists back, it already is.

"It is just strikingly beautiful. Not only is the natural setting beautiful

but the artwork, the public artworks, the pathways, it's been brilliantly designed."

The Governor planted a River Cherry tree during her visit to celebrate

Cardwell's 150th birthday.

"Instead of unveiling a plaque on a pile of rocks, that I did was plant a tree that will be a living monument," she said. "I just felt that this was such a wonderful symbol of the living spirit of Cardwell and the sense that something is going to grow and flourish was very special to me."

The Governor made a special trip to Cardwell State School while in town to see the local school children.

School principal

Brigitte MacKenzie said she felt honoured to hear that the Governor requested a visit to the school to hear the school song. "Apparently, she had heard about how wonderful our song was from other Cassowary Coast community members," she said.

"As the school's principal I felt very proud watching all of our students singing with pride, interacting with the Governor with confidence."

The Governor also donated a book on Government House to the school resource centre and presented the student leaders with a medalion that commemorated the Queen's Silver Jubilee.

ALEXANDRA SHEEHY

The Queensland Governor Penelope Wensley with Cardwell State School student leaders Sarah Stude, James Skoldis, Juliet De Bran, Shantae Ivey, Wilbur Ormonde and Hayes Tessmer.

Picture: SUPPLIED

Herbert River Express, 22 March 2014

'Essential' roadworks on key Paget arterial route poised to start

Jill Haughton
WORK EXPERIENCE
mackayjitem@dailymercury.com.au

ANOTHER section of roadworks is set to begin in South Mackay.

The road improvements have been deemed "essential" for Graffunder St, between Paradise St and Milton Sts, and on Milton St between Graffunder St and Nella Dr.

Mackay Regional Council roads and drainage portfolio councillor Kevin Casey said Doval Constructors would complete the \$2 million pro-

ject as a part of the Natural Disaster Relief and Recovery Arrangements (NDRRA).

"Road improvements in this area are essential to improve the pavement and enhance driver safety," Cr Casey said.

"(This area) is massive to our road network."

The growth of the Paget area and rising numbers of flight arrivals from the airport has left Milton St a major traffic area in South Mackay.

There will be a lot of "movement" during the road repairs, beginning next

month. Cr Casey said there had been a genuine improvement in Mackay's road network in recent years.

"We have had, and continue to have, discussions with the Queensland Reconstruction Authority on the best way to deliver the NDRRA projects and enhance our overall road networks," he said.

The project should be completed before the NDRRA June 30 deadline, subject to good weather, Cr Casey said.

"We will get it done provided we don't get a lot of wet weather," he said.

Daily Mercury, 6 March 2014

Minister announces \$47m for mitigation

DELIVERING flood mitigation projects within a 15-month time-frame to meet requirements for additional State Government funding "won't be a problem at all", according to Western Downs Regional Council Mayor Iay Brown.

Cr Brown's comments follow an announcement by Local Government Minister David Crisafulli that about \$47 million in additional funding would become available to assist local governments with projects that will help better prepare communities for future flood events.

The funding will come from local government grants, Royalties for the Regions and the Natural Disaster Resilience Program.

Cr Brown said that, while the additional funding was "a start", he would like to see the Federal Government match its state counterpart dollar for dollar, adding that the council's first priority was to implement the Draft 2013 Rivetne Flood Study.

"The main thing at the moment is to make sure the flood study gets put down," he said.

"I'm sure (our expressions of interest for funding) are already in, we didn't muck around."

"If we get the green light, we're going to do it, let me tell you."

While it remains to be seen how much, if any, additional funding is provided to the council, Mr Crisafulli said he believed the announcement demonstrated better planning for the Sunshine State.

"The days of politicians doing nothing except turning up after floods to cry crocodile tears are over," Mr Crisafulli said.

"This new phase in the local government funding process is aimed at giving councils the maximum

"Communities know best what they need to be better defended against flood waters and we are listening."

"Different locations need different infrastructure."

"In some communities, it will be a retention basin (and) in others backflow devices, but it is important that solutions are found locally."

amount of time possible to confirm, plan and talk to us about the projects they need to be more resilient."

Dalby Herald, 18 March 2014

WEST CREEK: Will be wider, deeper

Flood work to move on stormwater

Nick Haughton
nick.haughton@dailymercury.com.au

THE latest piece in Toowoomba's flood recovery program is under way with work beginning on major flood mitigation projects in West Creek Channel.

The development will feature the construction of a new stormwater network that takes in Gaggie, Cliffield and Toititini Sts.

Work along Gaggie St will continue with the installation of large concrete box culverts under the road between Cliffield St, across the busy Prescott St intersection, to meet up with the West Creek Channel.

More than 6000 cubic metres of material will be removed from West Creek channel in an effort to make it

wider and deeper.

Two pedestrian bridges and 300 linear metres of retaining wall will also be completed as part of the project.

The six month operation will require the construction group to navigate Toowoomba's aged underground services, including diverse six metres of high flow sewer.

As part of the project a section of Cliffield and Toititini Sts will be closed for two weeks as more than 170 metres of drainage works are installed.

Toowoomba Regional Council has contracted Civil Mining Construction to undertake the work on the West Creek Channel.



MEN AT WORK: CMC Contractors (from left) William Jackson, Anthony Neville and Anthony Kumar look over plans for the West Creek Channel project. PHOTO: KEVIN FARMER

Toowoomba Chronicle, 7 March 2014

St George came up with own solution

THE completion of St George's new levee system will provide a more certain future for its residents.

Community Recovery and Resilience Minister David Crisafulli said the town had suffered three major floods in the past five years.

"The levee is a great example of what can happen when the council, with State Government support, leads the charge to make the community more flood resilient."

"Council has come up with a local solution to a problem that has plagued the town for too long. Historical data shows floodwaters rising above the Bureau of Meteorology's major flood level 43 times in the past 121 years," he said.

The 2.6 kilometre block wall and earthen embankment levee is designed to withstand a flood even higher than the 2012 event which damaged 50 houses and the Warrawee Aged Care facility.

Stage One of the levee protects homes and the aged care facility at the southern and northern ends of the town, while the Stage Two block wall joins the levees in the middle to protect the main part of town.

Costing \$5.6 million, the levee was funded through state and federal funding and a partnership between the Balonne Shire Council and the Churches of Christ.

Toowoomba Chronicle, 18 March 2014

Council to begin flood repair work

ABOUE \$12 million worth of flood-damage restoration work is under way in South Mackay.

Contractors Doval Constructors are undertaking the repair work in Milton St, between Graffunder St and Nella Dr.

Work on Graffunder St, between Paradise and Milton Sts, will start on Monday.

Stage one works will be completed from Monday to Saturday between 6.30am and 5pm.

To maintain two-way traffic and avoid congestion in Milton St, the western parking lane will be used as a traffic lane.

From Monday, Graffunder St will only be open to local traffic.

Mackay Regional Council has instructed Council

residents they will not be able to access their driveways between 6.30am and 5pm until next April.

State and drainage portfolio councillor Kevin Casey apologised to motorists and residents for the temporary traffic interruption.

"Council is extremely grateful to residents and motorists for their cooperation during these often busy flood-repair works as we undertake and complete will help this project run smoothly," he said.

"Ultimately, improving the road surface in this area is essential and will enhance driver safety."

Cr Kevin Casey

"Cr Casey said the council was fully committed to working with the Queensland Government to ensure the essential flood-recovery work was completed by the June 30 deadline, weather permitting.

However, the project's time marking may occur in July.

Daily Mercury, 29 March 2014

Repairing flood damage

WORKS under way on Young St are being undertaken to repair a flood-damaged retaining wall, Gympie Regional Council says.

A council spokesman said Gympie Building Company was strengthening the Young St retaining wall by building a new one directly in front of it.

They said about a dozen car parks at the retaining wall would remain closed until the work was completed, which was expected to be in two weeks.

The original wall was extensively damaged in the 2012 floods and funding for its repair had come from National Disaster Relief and Recovery Work funding.



FLOOD REPAIR: Young St car park construction. PHOTO: PATRICK WOODS

The repair is one of many flood repair operations being undertaken throughout the region.

The council spokesman said Gympie Building Company had also won the tender to repair the Mary River dam, upstream from Kildrilloe. Work on those repairs is expected to begin in the coming two weeks.

Gympie Times, 1 March 2014

Appendices

Appendix A: Local Government Areas by Region

