

QUEENSLAND RECONSTRUCTION AUTHORITY

Monthly Report

September 2013

A decorative graphic in the bottom right corner of the page, consisting of several overlapping, radiating lines in various shades of maroon and red, creating a sense of motion and depth.

Document details:

Security classification	Public
Date of review of security classification	September 2013
Authority	Queensland Reconstruction Authority
Author	Chief Executive Officer
Document status	Final
Version	1.0

Contact for Enquiries:

All enquiries regarding this document should be directed to:

Queensland Reconstruction Authority

*Phone the call centre - **1800 110 841***

Mailing Address

Queensland Reconstruction Authority

PO Box 15428

City East Q 4002

Alternatively, contact the Queensland Reconstruction Authority by emailing info@qldra.org.au

Licence

This material is licensed under a [Creative Commons - Attribution 3.0 Australia licence](#).



The Queensland Reconstruction Authority requests attribution in the following manner:

© The State of Queensland (Queensland Reconstruction Authority) 2011-2014

Information security

This document has been classified using the [Queensland Government Information Security Classification Framework \(QGISCF\)](#) as PUBLIC and will be managed according to the requirements of the QGISCF.

Message from the Chief Executive Officer

Major General Richard Wilson AO
Chairman
Queensland Reconstruction Authority

Dear Major General Wilson

It is with pleasure that I present the September 2013 Monthly Report – the 31st report to the Board of the Queensland Reconstruction Authority (the Authority).

The Authority was established under the *Queensland Reconstruction Authority Act 2011* following the unprecedented natural disasters which struck Queensland over the summer months of 2010-11. The Authority is charged with managing and coordinating the Government's program of infrastructure renewal and recovery within disaster-affected communities, with a focus on working with our State and local government partners to deliver best practice expenditure of public reconstruction funds.

Following the widespread damage caused by ex-Tropical Cyclone Oswald in early 2013, the jurisdiction of the Authority was expanded by the *Queensland Reconstruction Authority Amendment Bill 2013* to cover this and other disaster events which occurred in the 2012-13 disaster event period, provide the Authority with a stronger focus on community resilience and extend the term of the Authority until 30 June 2015.

The Authority continues to monitor the progress of reconstruction and provide the resourcing and support necessary to build the momentum of reconstruction and enhance the resilience of communities for potential disasters. Whilst maintaining focus on the entire program, the Authority's current priorities are on progressing the remaining program of works from the 2011 and 2012 disaster periods, fast-track the progress to reconstruction works from the recent 2013 events and assisting councils and State agencies close out their completed works for the 2010 disaster period.

The September report provides an update on the progress of the program of works managed by the Authority:

- a cumulative value of \$15.0 billion in submissions have been received by the Authority to 2 September 2013, representing an increase of \$0.1 billion since last month
- a cumulative total of \$12.3 billion has been processed by the Authority to 2 September 2013 representing an increase of \$0.2 billion since last month
- a cumulative value of \$8.9 billion of the works program is in progress or has been delivered by delivery agents as at 31 July 2013.

The September report also provides an update on the \$80 million jointly funded program for Betterment projects open to LGAs affected by the 2013 events. The Betterment fund was announced in February 2013 for the restoration or replacement of essential public assets to a more disaster resilient standard than their pre-disaster standard. The September report profiles recently approved Betterment projects for Gladstone Regional Council - Turkey Beach Road and Round Hill Road.

The report also provides an update on the progress of the five functional recovery groups established in February 2013 under the Queensland 2013 Flood Recovery Plan (Recovery Plan) in response to the damage impacts of Tropical Cyclone Oswald.

I commend the report to you and recommend its release to the Minister and the public pursuant to Section 41 of the *Queensland Reconstruction Authority Act 2011*.

Yours sincerely



Graeme Newton
Chief Executive Officer
Queensland Reconstruction Authority

Contents

1.0 Introduction	1
1.1 Background	2
1.2 Purpose	2
1.3 Timing	2
2.0 Disaster Assistance	3
2.1 Queensland Disaster Assistance Framework	4
2.2 Disaster assistance by event period	5
2.3 Additional assistance measures	6
2.3.1 Betterment fund	6
2.3.2 Other assistance measures	6
3.0 Framing the Challenge	7
3.1 Events managed by the Authority	8
3.2 Queensland 2013 Flood Recovery Plan	9
3.3 Functional Recovery Groups	10
3.3.1 Human and social	10
3.3.2 Economic	11
3.3.3 Environment	12
3.3.4 Building	13
3.3.5 Roads and transport	14
4.0 Program Status	15
4.1 Recent developments	16
4.2 Combined program status	16
4.3 Looking forward	16
4.4 State-wide pipeline of works	17
4.5 Program of works expenditure	18
4.6 Betterment fund status	19
4.7 Iconic projects in reconstructing Queensland	21
5.0 Progress Reports	24
5.1 Progress of LGAs & DTMR by region	25
5.1.1 Far North Queensland	25
5.1.2 North Queensland	26
5.1.3 Central Queensland	27
5.1.4 Southern Queensland	28
5.1.5 South East Queensland	29
5.2 Progress of State-controlled roads and highways	30
5.3 Communications	34
5.3.1 Communicating progress	34
5.3.2 Media reports	35
Appendices	
Appendix A: Local Government Areas by Region	37
Appendix B: Disaster Recovery Coordinator Regions - Tropical Cyclone Oswald	38

Section one:
Introduction



1.0 Introduction

1.1 Background

Queensland has been struck by a series of unprecedented natural disasters in recent years. Between November 2010 and April 2011, extensive flooding caused by periods of extremely heavy rainfall, destruction caused by a number of storm cells including Cyclones Tasha, Anthony and Severe Tropical Cyclone Yasi and subsequent monsoonal flooding, resulted in all of Queensland being declared as disaster affected.

On 21 February 2011 in response to the 2011 disaster events, the Queensland Government established the Queensland Reconstruction Authority (the Authority) under the *Queensland Reconstruction Act 2011*. The Authority's role was subsequently extended to cover historical and continuing disaster events in Queensland and, on 26 September 2012, the State Government announced the initial extension of the term of the Authority's operations to June 2014.

The Authority has since been given responsibility to administer Natural Disaster Relief and Recovery Arrangements (NDRRA) for the large scale natural disaster caused by Tropical Cyclone Oswald in late January 2013 and additional events which have occurred in the 2012-13 disaster event period. The *Queensland Reconstruction Authority Amendment Bill 2013* was passed on 14 February 2013 to expand the jurisdiction of the Authority to include these recent events, provide the Authority with a stronger focus on community resilience and extend the term of the Authority to 30 June 2015.

1.2 Purpose

The Authority's mission is **to reconnect, rebuild and improve Queensland communities and its economy**.

The Authority is charged with managing and coordinating the Government's program of infrastructure renewal and recovery within disaster-affected communities, with a focus on working with our State and local government partners to deliver best practice expenditure of public reconstruction funds.

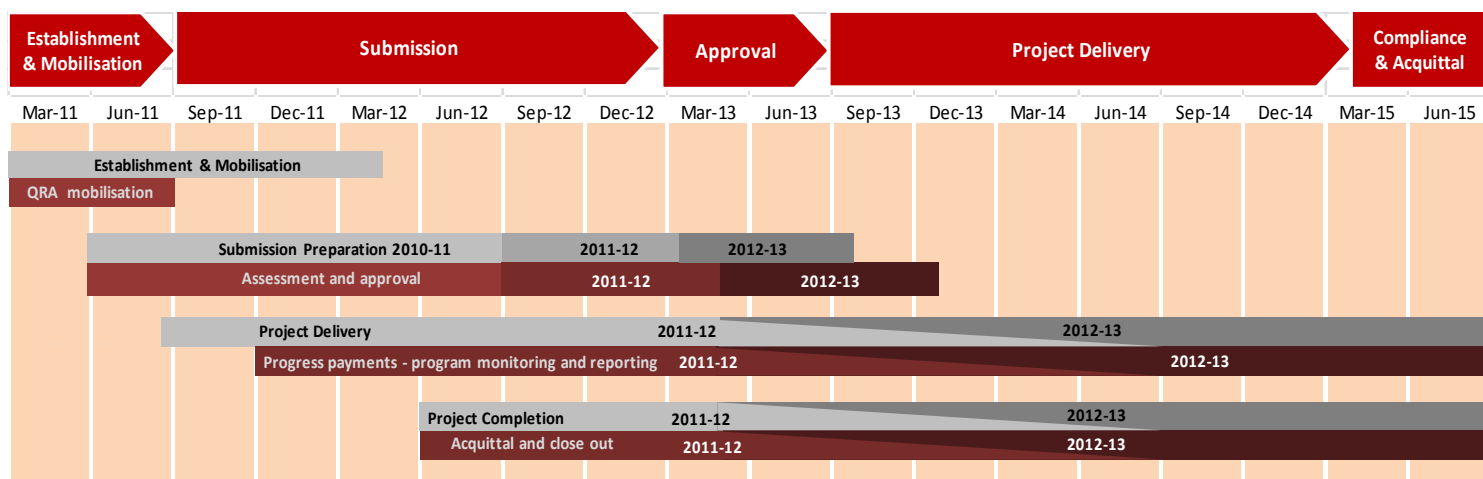
The Authority operates with reference to recovery and reconstruction plans established by the State in response to the 2011 disaster events and more recently following Tropical Cyclone Oswald. The Queensland 2013 Flood Recovery Plan (Recovery Plan), approved on 25 February 2013, provides strategic guidance for the coordination and management of recovery, reconstruction and community resilience activities undertaken across the State after Tropical Cyclone Oswald.

Five functional recovery groups have been established under the Recovery Plan to manage and coordinate recovery initiatives across impacted regions. The Authority provides support to, and reports on progress of the groups against their key tasks with decentralised responsibility for delivery across responsible agencies for each functional recovery group. The functional recovery groups follow from the lines of reconstruction established following the 2011 disaster events, the key tasks of which are now substantially complete.

1.3 Timing

The Authority's priorities are currently assisting councils and State agencies to progress their remaining program of works from the 2011 and 2012 disaster periods, with the bulk of the reconstruction work occurring over the next 12 months. Concurrently, the Authority is focused on accelerating the submission and application approval process for the recent 2013 events with a view to fast-tracking the 2013 program of works into project delivery phase as soon as practicable.

With the period to deliver works for the 2010 disaster period now complete (at 30 June 2013), the Authority is assisting delivery agents with the reporting of final expenditure and close out of the completed program of works for 2010 events.



Source: the Authority at February 2013

Section two:
Disaster Assistance

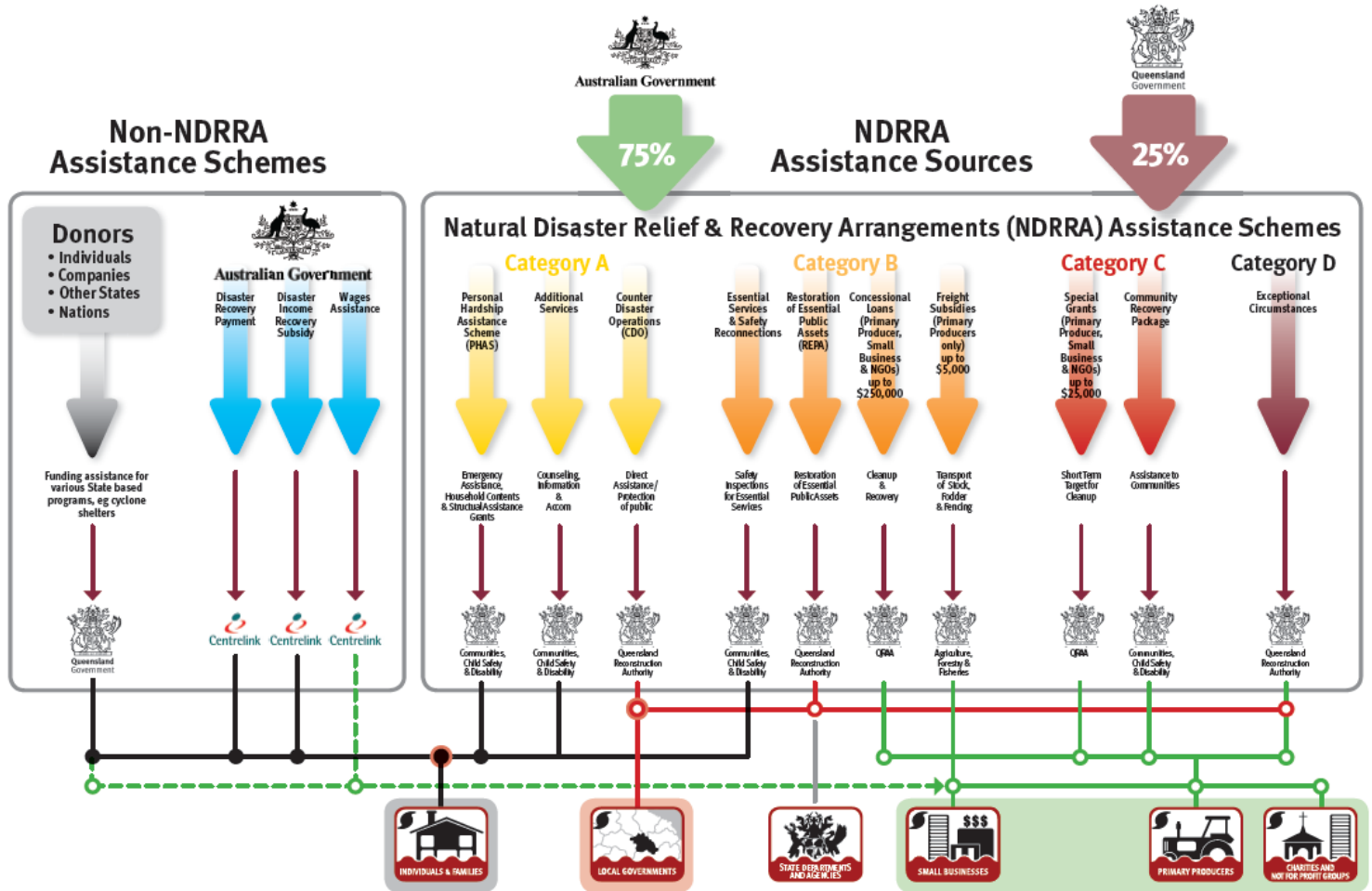


2.0 Disaster Assistance

2.1 Queensland Disaster Assistance Framework

The available Queensland Disaster Assistance schemes are separated between NDRRA (jointly funded by the Commonwealth and State governments) and Non-NDRRA funding schemes. The diagram below indicates the different elements of assistance available and how each element operates.

Figure 2.1.1 Queensland Disaster Assistance Framework



Whilst elements of the assistance schemes are delivered by other State agencies, all of the NDRRA assistance sources (and elements of the non-NDRRA assistance schemes) are administered by the Authority for historical and continuing disaster events in Queensland.

Disaster events managed by the Authority

The list of the activated disaster events managed by the Authority are set out in **Section 3.1** and can also be found on www.disaster.qld.gov.au.

This report includes references to event periods described as follows:

- **2012-2013 events:** Activated disaster events managed by the Authority from **October 2012 to April 2013**
- **2011-2012 events:** Activated disaster events managed by the Authority from **August 2011 to March 2012**
- **2010-2011 events:** Activated disaster events managed by the Authority from **November 2010 to April 2011** including Tropical Cyclone Yasi and Queensland flooding (November 2010 to February 2011)
- **2009-2010 events:** Activated disaster events managed by the Authority prior to November 2010
- **Combined Program:** relates to all the activated disaster event programs managed by the Authority.

2.3 Additional assistance measures

The State Government in conjunction with the Commonwealth have activated a range of jointly-funded Category C, Category D and other relief measures to alleviate distress due to the impact of Tropical Cyclone Oswald and the 2011 events. The measures are summarised below:

2.3.1 Betterment fund

On 8 February 2013, the Queensland Government signed the National Partnership Agreement (NPA) with the Commonwealth Government which recognised the need for a more streamlined process for the approval of Betterment funding. The Queensland Government announced a \$40 million commitment to Betterment funding which will match the Commonwealth Government contribution, resulting in the establishment of the \$80 million Betterment Fund.

Correspondence was received from the Commonwealth in August 2013 agreeing to the extension of the Betterment fund beyond its original coverage of LGAs declared for NDRRA assistance for Tropical Cyclone Oswald to also cover LGAs declared for the two additional disaster events that occurred after Oswald through to June 2013 (Longreach Flood (18 February 2013) and Central and Southern Queensland Low (25 February to 5 March 2013)). The Betterment fund is available for the restoration or replacement of essential public assets to a more disaster resilient standard than their pre-disaster standard. The intent of betterment is to increase the resilience of communities to natural disasters, while at the same time reducing future expenditure on asset restoration, reducing incidents, injuries and fatalities and improving asset utility during and after natural disasters.

Where a damaged asset is approved as a betterment project, the normal cost of restoring or replacing the asset to its pre-disaster standard will continue to be funded under Category B of NDRRA assistance and the incremental cost to 'better' the asset to a more disaster-resilient standard will be financed from the Betterment fund.

The status of the Betterment fund and profiles of recent approved Betterment projects is set out in Section 4.6 of this report.

2.3.2 Other assistance measures

Tropical Cyclone Oswald

- **Community Recovery Package - \$5 million** - Funding for community development officers in the hardest hit communities of Bundaberg and North Burnett, support for mental health services and a flexible fund that assists communities to implement engagement and development activities.
- **Clean Up and Recovery program - \$10 million** - Program to assist primary producers to clear debris and restore fencing in the worst affected areas; to maintain workers while income generating activities are reduced and to clear debris from watercourse that poses a hazard to downstream infrastructure and activities.
- **Industry Recovery Officers - \$1.5 million** - Placement of Industry Recovery Officers to assist business and primary producers recover from flooding.
- **Enhanced concessional loans and grants** - Loans of up to \$650,000 (with a grant component of up to \$50,000) are available to applicants that have suffered extreme damage such that the existing concessional loan and recovery grants under NDRRA category B and C are insufficient to support recovery.
- **Environmental Recovery program - \$10 million*** - Program to fund existing programs to conduct flood specific clean up and soil conservation work following the 2013 flooding.
- **Rural Financial Counselling Services - \$1.5 million*** - Provision of financial planning advice for rural businesses and primary producers to assist in the recovery of local economies following the disaster.

2011 events

- **Queensland Local Council Package - \$315 million** - Funding to help local councils repair utilities and infrastructure, and support their efforts in recovering from the floods and Cyclone Yasi. The package comprises two components: \$265 million to fast-track the repair of damaged infrastructure, including the Strengthening Grantham project, Brisbane ferry terminals and Riverwalk; and \$50 million to contribute to regional and remote councils employing people to perform important clean-up and repair work.
- **Cassowary Coast Support Package - \$15 million** - Funding to restore vital council infrastructure and restore natural vegetation and beach damage in the Cassowary Coast region. Specifically, the Support Package provides for the repair of Dunk Island Jetty, the repair of Clump Point Jetty and the restoration of Cardwell beach foreshore and its natural vegetation.
- **Exceptional Disaster Assistance Scheme** - Concessional interest loans of up to \$650,000, with grant component of up to \$50,000, to eligible businesses, primary producers and not-for-profit organisations that suffered extreme damage.

In addition, the State Government and Commonwealth have agreed to an extended Day Labour Trial, which enables councils to deliver restoration works with their own workforce on condition that they provide evidence of savings in both time and cost.

* Non-NDRRA measures funded 50% by the State and 50% by the Commonwealth; Commonwealth share is being delivered directly through existing Commonwealth programs.

Section three: Framing the Challenge



3.0 Framing the Challenge

3.1 Events managed by the Authority

The Authority has responsibility to administer NDRRA relief measures for historical and continuing disaster events in Queensland.

The Authority currently manages and coordinates the infrastructure reconstruction and recovery for 18 disaster events activated for NDRRA relief measures since the Authority's establishment in February 2011 and the remaining program of works for an additional 16 disaster events which occurred prior to the Authority's establishment.

2012-2013 natural disaster events managed by the Authority:

- South West Queensland Wildfires, 21 December 2012
- Far Northern Queensland Bushfires, late October - December 2012
- Tropical Cyclone Oswald and Associated Rainfall and Flooding, 21-29 January 2013 *
- Longreach Flood, 18 February 2013
- Central and Southern Queensland Low, 25 February - 5 March 2013

2011-2012 natural disaster events managed by the Authority:

- Queensland Bushfires, August to October 2011
- Localised Heavy Rainfall Northern Queensland, October 2011 *
- Southern Queensland Flooding, November to December 2011 *
- South East Queensland Heavy Rainfall and flooding, 23- 26 January 2012 *
- Western Queensland Tropical Low, 27 January to February 2012 *
- Far Northern Queensland Tropical Low, 3-4 February 2012 *
- North Coast Queensland Storms and flooding and East Coast Hybrid Low, 24 February - 7 March 2012 *
- Northern and Far Northern Queensland Heavy Rainfall & flooding, 15 March 2012 *
- East Coast Low, 22 March 2012 *

2010-2011 natural disaster events managed by the Authority:

- Queensland Flooding and Tropical Cyclones Tasha and Anthony, November 2010 to February 2011*
- Severe Tropical Cyclone Yasi on 2 February 2011*
- Queensland Monsoonal Flooding Event, 8 February 2011*
- South West Flooding, April 2011*

2007-2010 natural disaster events managed by the Authority that have open submissions for damage:

- South East and North Coast Queensland East Coast Low, August 2007
- South West Queensland storms and flooding, 23-30 November 2007
- Central Western Queensland storms and flooding, 22-30 December 2007
- South East Queensland East Coast Low, 27 December 2007 - 7 January 2008
- Queensland Monsoonal flooding, January 2008
- Queensland Monsoonal flooding, February March 2008
- South West Queensland flooding, June 2008
- Queensland storms and associated flooding, 16-22 November 2008
- Queensland Monsoonal flooding and Tropical Cyclone Charlotte and Ellie, January - February 2009
- South East Queensland Low, May 2009
- Queensland Bushfires, September – October 2009
- South West Flooding, 20 – 25 November 2009
- Northern, Central and South West Queensland Flooding, 22 December 2009 to 8 January 2010
- Queensland Monsoonal Flooding and Tropical Cyclones Olga, Neville, Ului and Paul, January to April 2010
- South West Queensland Low and Associated Flooding, September 2010
- 2010 South East Queensland Flooding, 9-12 October 2010.

* Events covered under the National Partnership Agreement for Natural Disaster Recovery and Reconstruction (NPA) between the State and Commonwealth Government signed 8 February 2013 (NPA Events)

3.2 Queensland 2013 Flood Recovery Plan

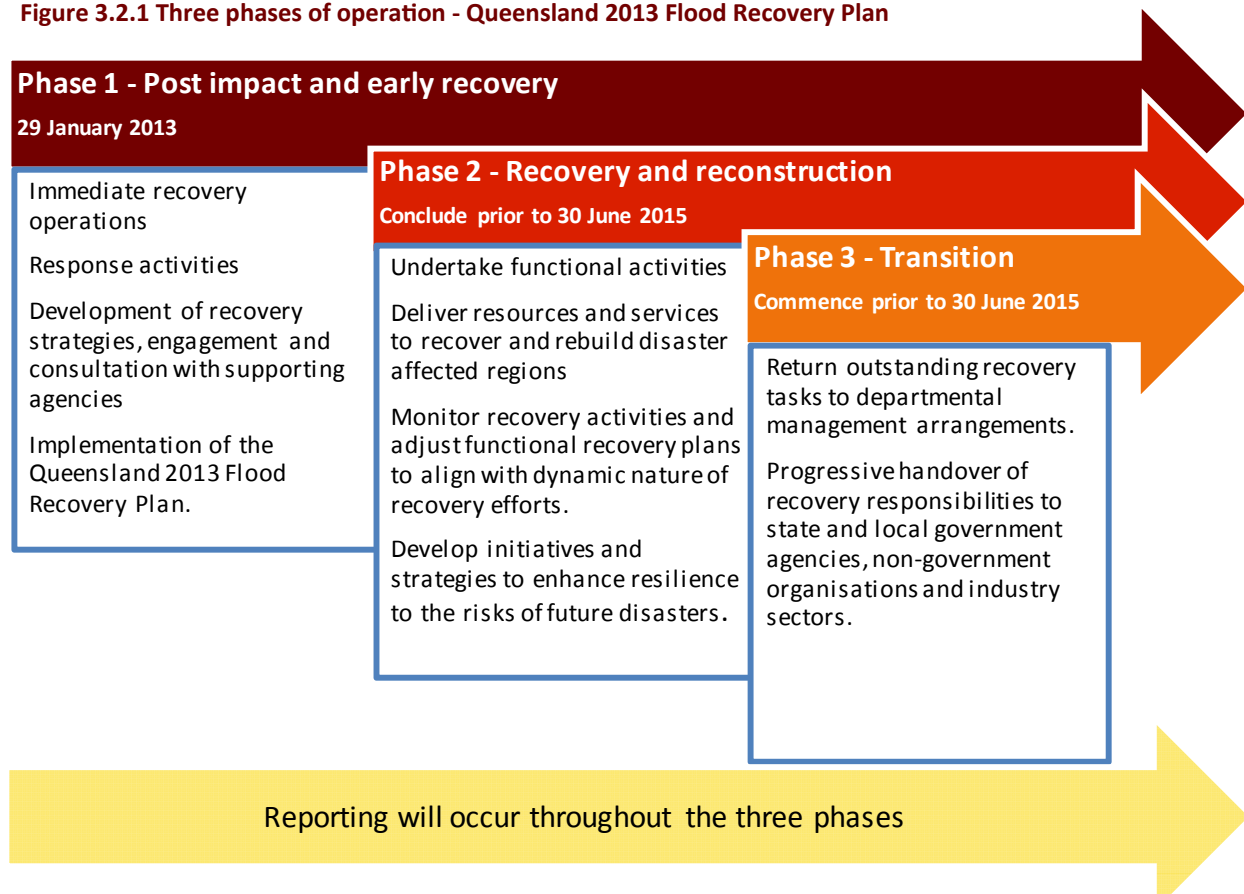
The Recovery Plan has been prepared to set the framework for the recovery from the flood and damage impacts of Tropical Cyclone Oswald. The aim of the plan is to assist affected communities to get back on their feet as quickly as possible while ensuring the effective and efficient employment of limited resources.

The Recovery Plan establishes the context for recovery at the State and local levels of government through setting the governance framework and providing strategic guidance for the coordination and management of recovery, reconstruction and community resilience activities of those areas impacted by Tropical Cyclone Oswald.

The Recovery Plan also sets the context for improved enhancement of resilience and aims to improve the State's ability to withstand, and bounce back from, future natural disaster events.

The plan coordinates the prioritisation and alignment of resources from multiple sources to support the broad range of recovery activities. These activities are being undertaken across three phases as set out in **Figure 3.2.1**.

Figure 3.2.1 Three phases of operation - Queensland 2013 Flood Recovery Plan



The Recovery Plan also establishes the structure for recovery activities from Tropical Cyclone Oswald.

Disaster Recovery Coordinators have been appointed to coordinate disaster recovery efforts within the regions most impacted by Tropical Cyclone Oswald:

- Northern Queensland Region— Don Cousins
- Bundaberg/North Burnett Region—Deputy Commissioner Brett Pointing APM
- Southern Queensland Region— Bill Mellor.

The composition of the three regions is set out in **Appendix B**.

Functional recovery groups, led by relevant State agencies, have also been established to effectively manage and coordinate recovery initiatives across impacted regions. The roles and responsibilities of each functional recovery group, together with the key performance metrics used to measure the rate of recovery progress, are set out in the Recovery Plan and summarised in **Section 3.3**.

The Authority provides support to the Disaster Recovery Coordinators and reports on progress of the functional recovery groups against their key tasks.

3.3 Functional Recovery Groups

The Recovery Plan provides a broad overview of each functional recovery group's roles and responsibilities and sets out the key performance metrics used to measure each group's progress.

An update on the progress of the functional recovery group against their key performance metrics is set out in this section of the report.

3.3.1 Human and social

The Human and Social functional recovery group coordinates the efficient and effective delivery of human and social recovery activities. These activities include the provision of financial assistance and personal support services for individuals, families and communities.

The status of the key metrics being monitored by the Human and Social Recovery Group in relation to the recovery from Tropical Cyclone Oswald has been reported by the group at 31 August 2013 as follows:

Human and social	Metric	Status
1. All Essential Household Contents Grant (EHCG) applications assessed and paid when eligible	Number of grant applications	4,625
	Number of grant applications assessed	4,625
	Number of grant applications assessed as payable and paid	3,540
2. All Structural Assistance Grant (SAG) applications assessed	Number of grant applications	726
	Number of grant applications under assessment or awaiting additional information	61
	Number of grant applications assessed as payable and paid	339
3. All Essential Services Safety and Reconnection Scheme Grant (ESSRG) applications paid when eligible	Number of grant applications	414
	Number of grant applications under assessment or awaiting additional information	62
	Number of grant applications assessed as payable	213
4. Communities are supported by additional 'counselling, other' services	Number of grants paid	213
	Number of new clients receiving support from NDRRA funded services	See below
	Number of hours of service provision by NDRRA funded services	See below
5. All displaced households seeking housing assistance are assessed for housing need and referred to appropriate housing services.	Number of displaced households seeking housing assistance	652
	Number of households assisted	652
	Number of applications under assessment	0

Personal Hardship Assistance Schemes (PHAS)

PHAS comprises EHCG, SAG and ESSRG.

At 31 August 2013, 5,765 applications have been received across the three categories of PHAS. Of these:

- 4,092 have been assessed as payable, an increase of 65 approvals during the month—refer **Figure 3.3.1.1**
- 123 are under assessment or unable to be processed until supporting documentation is received from the applicant.

All EHCG applications have now been assessed and paid, where eligible. A small number of applications may be received each month, however the majority have now been received.

The process for finalising SAG and ESSRG grants requires site inspection by community recovery officers or qualified tradespeople prior to payment.

Counselling and other services

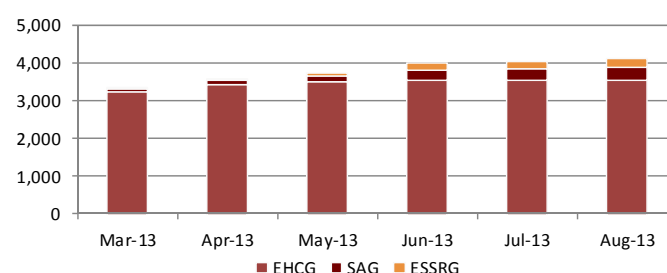
The Personal Support and Community Development programs, part of the \$5 million Community Recovery Package for Bundaberg and North Burnett, are underway. North Burnett and Bundaberg Regional Councils have community development officers in place and UnitingCare Community has commenced service delivery.

Displaced households

Housing service centres have now returned to normal business activities following completion of this recovery initiative.

652 displaced households were provided with housing assistance. Of these, 280 households were assisted into temporary accommodation and the remaining 372 requests were met through other means (alternate housing solution found, returned to own home, insurance company assisting). No requests are outstanding.

Figure 3.3.1.1 Number of PHAS applications assessed as payable



(Source: DLGCRR at 31 August 2013)

3.3.2 Economic

The Economic recovery group coordinates the efficient and effective planning and implementation of economic recovery activities. These activities include advice on the economic impacts of current disaster events and the group also provides information on the needs of local government and industry in responding to the events and getting the economy back to full production.

The status of the key metrics being monitored by the Economic Recovery Group in relation to the recovery from Tropical Cyclone Oswald has been reported by the group at 31 August 2013 as follows:

Economic	Metric	Status
1. Coal exports (Coal Export Tonnage)	Data is sourced from the monthly Queensland Coal Transport Report. This report provides an overview of Queensland coal exports and coal transport system performance.	Queensland coal export throughput in July 2013 totalled 16.3Mt, an increase of 28.5% increase on July 2012. To 30 June 2013, 2012-13 coal exports totalled 180.2Mt, a 9% increase on the same period in 2011-12. This is a state-wide measure and so can only be used as a broad indicator of overall health of the economy, rather than reflecting the recovery of specific regional industries. However, the current figures can be considered to represent a solid recovery.
2. NDRRA Financial assistance	Categories and amount of funding approved	Range of Category C and Category D measures activated to alleviate distress due to the impact of Tropical Cyclone Oswald - see Section 2.3 . Cat B loan approvals: - \$2.19M to 26 primary producers - \$0.25M to 4 small business Cat C grant approvals: - \$8.61M to 797 small businesses - \$34.20M to 3,354 primary producers - \$1.33M to 119 non-profit organisations Cat D loan-grant approvals: - \$9.08M to 30 primary producers - \$2.27M to 4 businesses - \$1.66M to 4 small businesses. See Figure 3.3.2.1

Economic Recovery Initiatives

The Local Government Traineeship Strategy, being delivered by the Local Government Association of Queensland (LGAQ), is underway with a total of 25 affected councils allocated with 120 traineeship positions. To date, 16 trainees are undertaking the program with five councils.

Mentoring for Recovery workshops, aimed at assisting flood affected businesses address business challenges and issues, have been held in Gympie (two series), Bundaberg, Fraser Coast and North Burnett and are scheduled for a second series for North Burnett and Bundaberg in September.

A draft report of the economic impact of the floods by Bundaberg and North Burnett Regional Councils was submitted on 26 August 2013.

North Burnett Regional Council has received funding of \$50,000 towards a study to implement a suitable wireless WAN technology to allow more reliable communication as part of their community redundancy practices during disasters.

Funding has been allocated for two levees in Bundaberg, and to backfill/stabilise the bank along the Burnett River near Midtown Marina. Bundaberg Regional Council is also to receive funding for the flood study of the lower Burnett River, Lower Kolan River and Gin Gin Creek catchments.

Funding has been received for the installation of early flood warning programs across the North Burnett.

RACQ grants worth a total of \$760,000 have been announced for the Bundaberg region, with the recipients including Bundaberg Hockey, Bundaberg Basketball and Bundaberg Skills Centre.

(Source: DLGCR at 31 August 2013)

Primary producers, rural and small businesses

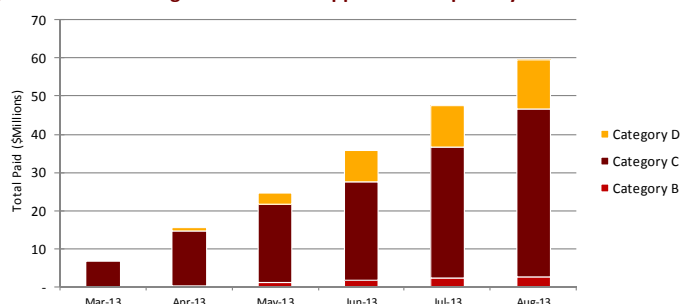
The State has hosted a number of Regional Recovery workshops to provide information to affected landholders on how to bring their paddocks back to production as soon as possible. 238 primary producers have participated in these workshops and an additional 365 primary producers have attended one of three mobile offices.

A Trade and Market Access Forum was held in Bundaberg on 26 August 2013 to engage further growth and expansion of internal trade and market access to Bundaberg and North Burnett regions.

Under NDRRA Category D measures, 17 full-time Industry Recovery Officers (IRO) are operating as the primary point of contact for farmers and small businesses to access government assistance programs and services. In addition, two financial advisors have been appointed to provide financial advice to affected rural businesses and primary producers to assist with recovery.

As set out in the table above and **Figure 3.3.2.1** below, \$59.6 million of NDRRA Category B, C and D grants and loans have been provided to 3410 primary producers, 809 business and small businesses and 119 non-profit organisations. Applications for these loans and grants were to close on 30 August 2013; however, this date has now been extended to 29 November 2013.

Figure 3.3.2.1 NDRRA grants and loans approved –Tropical Cyclone Oswald



3.3.3 Environment

The Environment recovery group coordinates the efficient and effective planning and implementation of environment recovery activities. These activities include advice on the measures required to achieve environmental recovery and to monitor and provide advice on current and potential environmental and cultural heritage issues. It also facilitates information exchange and maximises efficient allocation of resources towards recovery. A key focus is to progress strategies to reduce future impacts on the natural environment, in both urban and rural landscapes, focussing on long term resilience and sustainability.

The status of the key metrics being monitored by the Environment Recovery Group in relation to the recovery from Tropical Cyclone Oswald has been reported by the group at 31 August 2013 as follows:

Environment	Metric	Status
1. National parks	National parks affected by this event to re-open for conservation management	266 (45%) affected 265 recovered or partially opened
2. Sewage treatment and water supply	Sewage treatment plants (STP) and water treatment plants (WTP) affected by this event return to compliance with their relevant environmental authorities	Recovery complete 122 affected 122 recovered
3. Mining operations	Mining operations affected by this event return to compliance with their relevant environmental authorities.	Recovery complete 35 have conducted mine water releases 35 have returned to compliance*

* returned to compliance with their relevant environmental authority regarding water releases.

1. National parks

266 (45%) of Queensland's national parks, conservation parks, state forests and resource reserves have been affected by the Tropical Cyclone Oswald event. Of these, 124 were subject to closure.

The current estimation of damage costs to national parks is \$6.275 million.

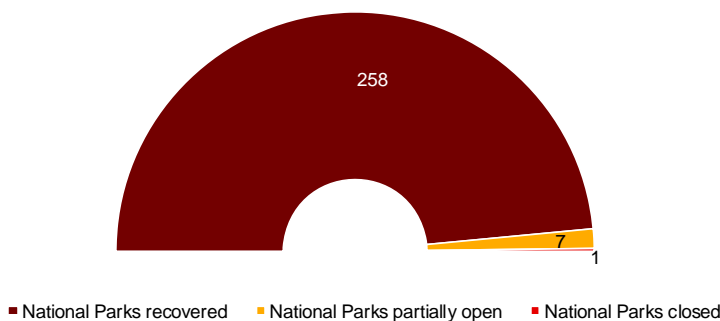
At 31 August 2013:

- 258 (97%) protected areas have been recovered
- seven (3%) protected areas have been partially opened
- only one protected areas remain closed or is inaccessible.

Figure 3.3.3.1

Repairs at the Glen Rock State Forest in the Lockyer Valley, the park that remains closed, are complete. However, the park is restricted from reopening by local road closures. Queensland Parks and Wildlife Service staff are continuing to liaise with council officers as to proposed timeframes for completion of access road repairs.

Figure 3.3.3.1 Affected national parks



2. Sewage treatment and water supply

All 122 sewage treatment plants, water treatment plants and sewage pump stations affected by the Tropical Cyclone Oswald event have now been recovered.

3. Mining operations

35 Queensland mines have conducted mine water releases as a result of the Tropical Cyclone Oswald event, comprising 28 of the 45 coal mines in the Fitzroy Basin, one mine in the Burdekin and six mines in southern Queensland.

All Temporary Emissions Licences issues have now expired, with all mining operations reverting back to operating under their environmental authorities.

Clean-up and recovery program

On-farm productivity contracts and environmental recovery contracts to the value of \$14.5 million were executed prior to 30 June 2013.

Remaining funding will be contracted and spent in 2013-14 and 2014-15 financial years.



Above: one of several large landslides that closed the track to Mt Cordeaux, Main Range National Park and has since been recovered.

(Source: DLGCR at 31 August 2013)

3.3.4 Building

The Building recovery group coordinates the efficient and effective information exchange, issues identification and resolution between government agencies, building industry and insurance providers to ensure the efficient and prioritised use of available resources.

The status of the key metrics being monitored by the Building Recovery Group in relation to the recovery from Tropical Cyclone Oswald has been reported by the group at 31 August 2013 as follows:

Building	Metric	Status
1. Provision of immediate and longer-term temporary accommodation	Timely procurement of adequate numbers of accommodation units	On track see below
	Number of displaced households seeking housing assistance	On track see below
	Number of households assisted into temporary accommodation	On track see below
2. Provision of assistance and advice to building client agencies to support the repair and restoration of State public buildings	Number of significantly affected State public buildings and extent of damage ¹	99
	Number of significantly affected State public buildings repaired/restored to service ²	99
	Significantly affected State public buildings with repairs in progress	6
3. Provision of building advice and information to support the community in its recovery	Building Services Authority (BSA) website updated with factsheets relevant to natural disaster recovery	On track see below
	Regular status updates by Industry Associations to Building Recovery Group (BRG) Sub Committee	Complete. No further activity required
4. Provision of advice to the recovery supply chain including contractors, subcontractors and material suppliers	Regular status updates by Industry Associations to BRG Sub Committee	Complete. No further activity required
5. Participation in future planning forums and discussion panels	Regular status updates by Industry Associations to BRG Sub Committee	Complete. No further activity required

¹ Significantly affected is defined as water 100mm over the floor level or serious structural damage and loss to related assets.

² Data provided refers to significantly affected public buildings which include schools and early childhood centres; ambulance, police and fire stations; hospitals; government employee accommodation and social housing.

Provision of immediate and longer-term temporary accommodation

As set out in Section 3.3.1, 652 displaced households were provided with housing assistance. Housing service centres have now returned to normal business activities following completion of this recovery initiative.

Immediate accommodation provided consisted of two fully serviced camps (340 beds) established in the week commencing 27 January 2013. Both camps were closed by 13 March 2013.

Longer term temporary accommodation (approximately 6 to 12 months) was established in the first weeks of the flood event:

- Bundaberg – 77 beds modular units
- Mundubbera – 58 beds modular units
- Gayndah – 22 beds modular units.

All residents temporarily housed at Bundaberg have now been rehoused, and work to remove the modular units has been completed.

All households temporarily housed in the North Burnett area have an exit plan in place which may include returning to private home, returning to private rental, and/or working with RentConnect Officers to find private rental accommodation.

Provision of assistance and advice to building client agencies

At 31 August 2013, there were 99 significantly affected State public buildings and all 99 had been restored to service (are operational or operating from temporary accommodation).

During August, repairs were completed on three public buildings. There are six remaining public buildings being repaired or awaiting repair.

Provision of building and other advice to the community and recovery supply chain

The BRG Sub-Committee has been stood down following substantial completion of its key tasks.

Activities of the BSA have largely returned to business as usual with requests for information, guidance or support now channelled to relevant staff members within BSA for action.

(Source: DLGCR at 31 August 2013)

3.3.5 Roads and transport

The Roads and Transport recovery group coordinates the efficient and effective delivery of road and transport recovery activities. These activities include input to the development of the Roads and Transport Recovery Program, including identifying priorities. The Department of Transport and Main Roads (DTMR) is responsible for delivering the state-controlled roads and transport response, recovery and reconstruction and is engaging directly with industry and the community on the reconstruction phases following the natural disaster.

The status of the key metrics being monitored by the Roads and Transport Recovery Group in relation to the recovery from the events of early 2013 has been reported by the group at 31 August 2013 as follows:

Roads and Transport	Metric	Status
1. Damaged state-controlled roads to be reconstructed (kms)	Total length of damaged roads (kms)	620 km
	Total length of damaged roads reconstructed (kms)	35 km
	Total length of damaged roads under reconstruction (kms)	37 km
2. Kms of rail line Impacted/damaged rail line	Total length of impacted/damaged lines (kms & %)	3,100 kms (43%)
	Total length of impacted/damaged rail line recovered (kms)	Recovery complete 3,100 kms

1. Damaged State controlled roads

The status of DTMR's recovery and reconstruction program (inclusive of 2010 to 2013 event works) is discussed in further detail in **Section 5.2 Progress of State-controlled roads and highways**.

DTMR has completed its road recovery phase, clearing, repairing and reopening roads affected by the three natural disaster events since January 2013. During this time, 5341 km roads were recovered and reopened.

Under DTMR's reconstruction program, reconstruction of 35km of roads damaged by Tropical Cyclone Oswald has been completed and an additional 37km is under construction—refer **Figure 3.3.5.1**.

During August, 16 km of roads were completed and the total distance of roads under reconstruction increased by 18 km.

Key reconstruction work projects completed and underway are set out opposite.

2. Rail network

All 3,100km (43% of the total rail network) impacted as a result of the 2013 events have been recovered.

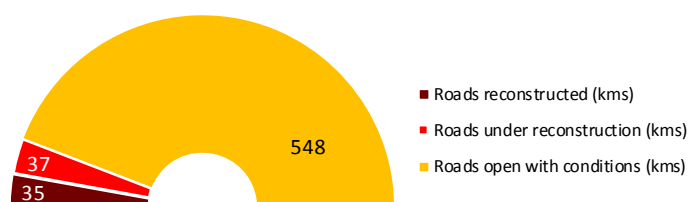
Key reconstruction works complete

- **Tallon Bridge** on the Isis Highway in Bundaberg was fully reconstructed within three weeks of the flooding event and access restored for all traffic.
- **Neerkol Creek Bridge** 30 km west of Rockhampton on the Capricorn Highway was reopened within days of the event.

Key reconstruction works underway

- **Burnett Highway, Mt Morgan Range**—reconstruction works following 35 cut/fill slips started in May 2013 and is scheduled for completion in early February 2014, weather permitting.
- **Mt Sylvia Road, Lockyer Valley**—following recovery works after the road was washed away, reconstruction works commenced in July 2013. Works were completed on a number of sidetracks during the month and construction of permanent floodways is underway (refer Section 6.7 for additional information).
- **Warrego Highway, Jondaryan to Dalby**—pavement testing is complete and detailed designs are being progressed following pavement failures as a result of the 2013 events. An Expression of Interest released to the open market closed 23 August. Works are currently being undertaken to keep the site safe until design is complete and contract progressed.
- **Burnett Highway, Ban Ban Springs to Monto**—interim recovery works have returned the full road to normal operating conditions. Further reconstruction work is scheduled in early 2014.
- **Bruce Highway, Maryborough to Gin Gin**—interim recovery works have returned the full road to normal operating conditions. Embankment slip at Tim Fischer Bridge is stable and being monitored. Further reconstruction work is scheduled in late 2013.

Figure 3.3.5.1 Roads reconstruction program—Tropical Cyclone Oswald event



(Source: DLGCR 31 August 2013)

Section four:
Program Status



4.0 Program Status

4.1 Recent developments

Since the last report, there have been no additional disaster event activations declared for NDRRA financial assistance.

With a deadline of 30 June 2013 for delivery agents to incur NDRRA-eligible expenditure on works arising from the 2010 disaster period, the Authority was active in the period leading up to this date assisting delivery agents with residual 2010 works complete their programs. With this period now passed, delivery agents are focused on delivery of the remaining program of works.

4.2 Combined program status

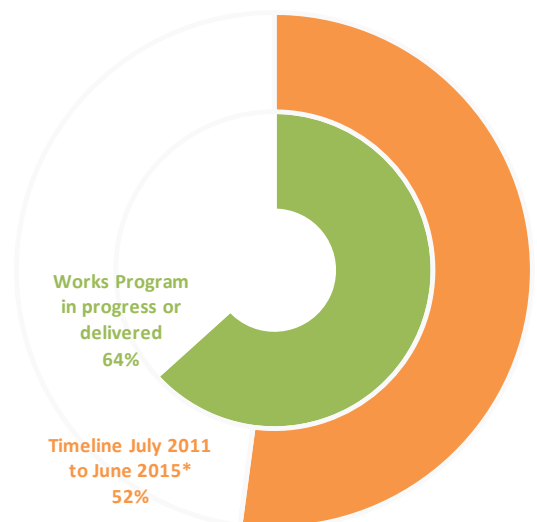
Following completion of the Authority's regular quarterly review process at June 2013, the program of works for all events actively managed by the Authority (2009 to 2013) is estimated to be \$14.0 billion.

The estimated cost of the damage from the events of early 2013 is more than \$2.4 billion and the cost of the 2010-2011 and 2012 events are estimated to be \$7.0 billion and \$1.9 billion respectively. Ahead of reporting of final expenditure and close out of the relevant programs, the final cost of works for the 2009 and 2010 events is estimated to be over \$2.7 billion.

Since the last report, the combined program of works for all events managed by the Authority has progressed as follows:

- a cumulative value of \$15.0 billion in submissions have been received by the Authority to 2 September 2013, representing an increase of \$0.1 billion since last month
- a cumulative total of \$12.3 billion has been processed by the Authority to 2 September 2013 representing an increase of \$0.2 billion since last month
- a cumulative value of \$8.9 billion of the works program is in progress or has been delivered by delivery agents as at 31 July 2013
- funding acquitted for individuals, small business, primary producers and non-profit organisations amounts to \$495.2 million.

Figure 4.2.1 Combined program progress



4.3 Looking forward

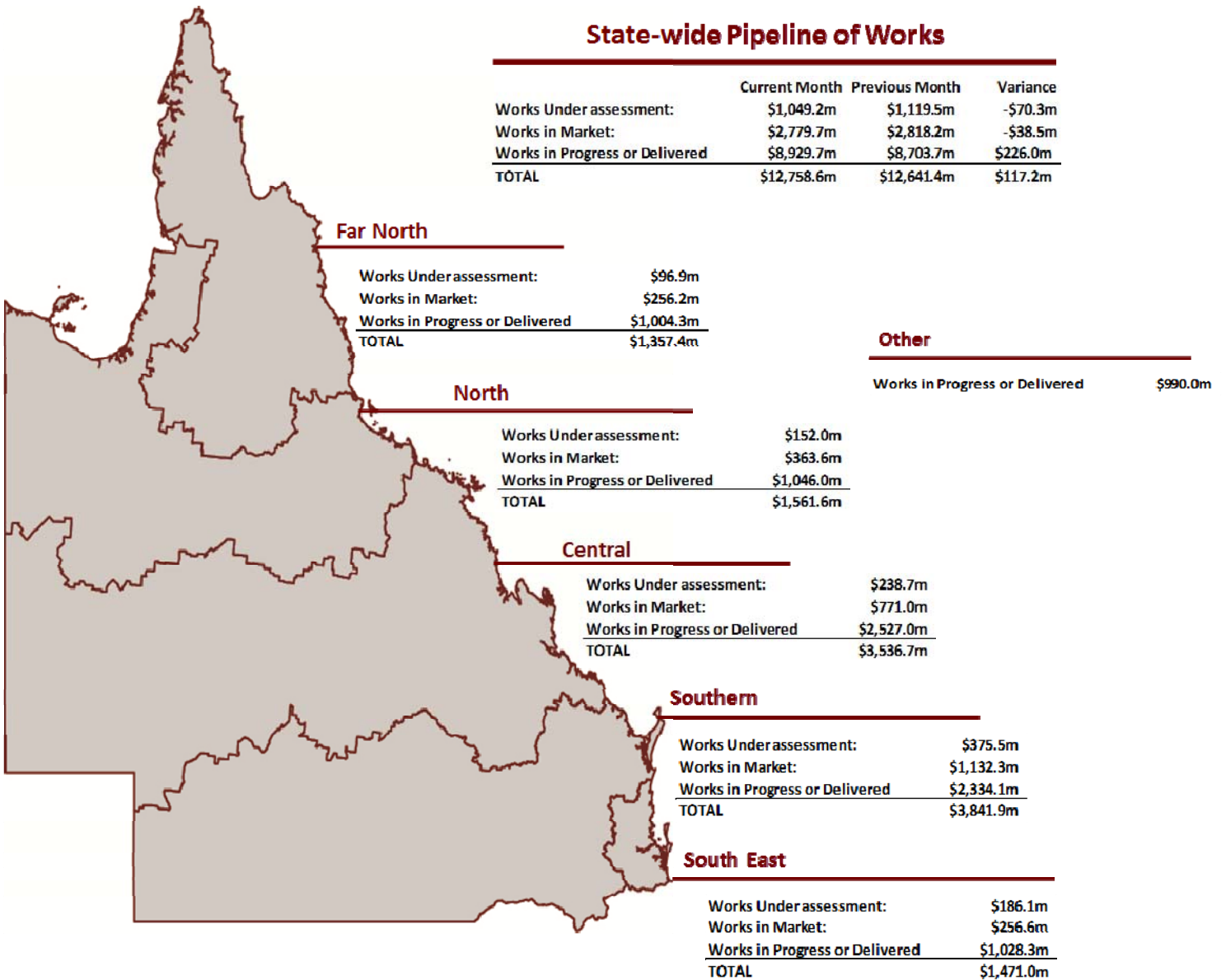
As noted above, the Authority's priorities are focused on assisting councils and State agencies to progress their remaining program of works from the 2011 and 2012 disaster periods, with the bulk of the reconstruction work occurring over the next 12 months. Concurrently, the Authority is focused on accelerating the submission and application approval process for the recent 2013 events with a view to fast-tracking the 2013 program of works into project delivery phase as soon as practicable.

As the period to deliver works for the 2010 disaster period concluded on 30 June 2013, the Authority is assisting delivery agents with the reporting of final expenditure and close out of the completed program of works for 2010 events.

* Proportion of allowable time passed for delivery of total program since 1 July 2011 (following Authority's establishment) to data reporting date

4.4 State-wide pipeline of works

The Pipeline of works for all events actively managed by the Authority (2009 to 2013) has an estimated program value of \$14.0 billion, the status of which is set out below.



Note:

1. Works Under Assessment and Works in Market represents data as at 31 July 2013 (DTMR) and 2 September 2013 (LGAs and Other). Works in Progress or Delivered represents spend by delivery agents to 31 July 2013 as reported to the Authority at 2 September 2013. Additional works have been conducted but are yet to be reported to the Authority
2. Other encompasses SDAs other than DTMR as well as the 2011 and 2013 Other Assistance.

Pipeline of Works Definitions

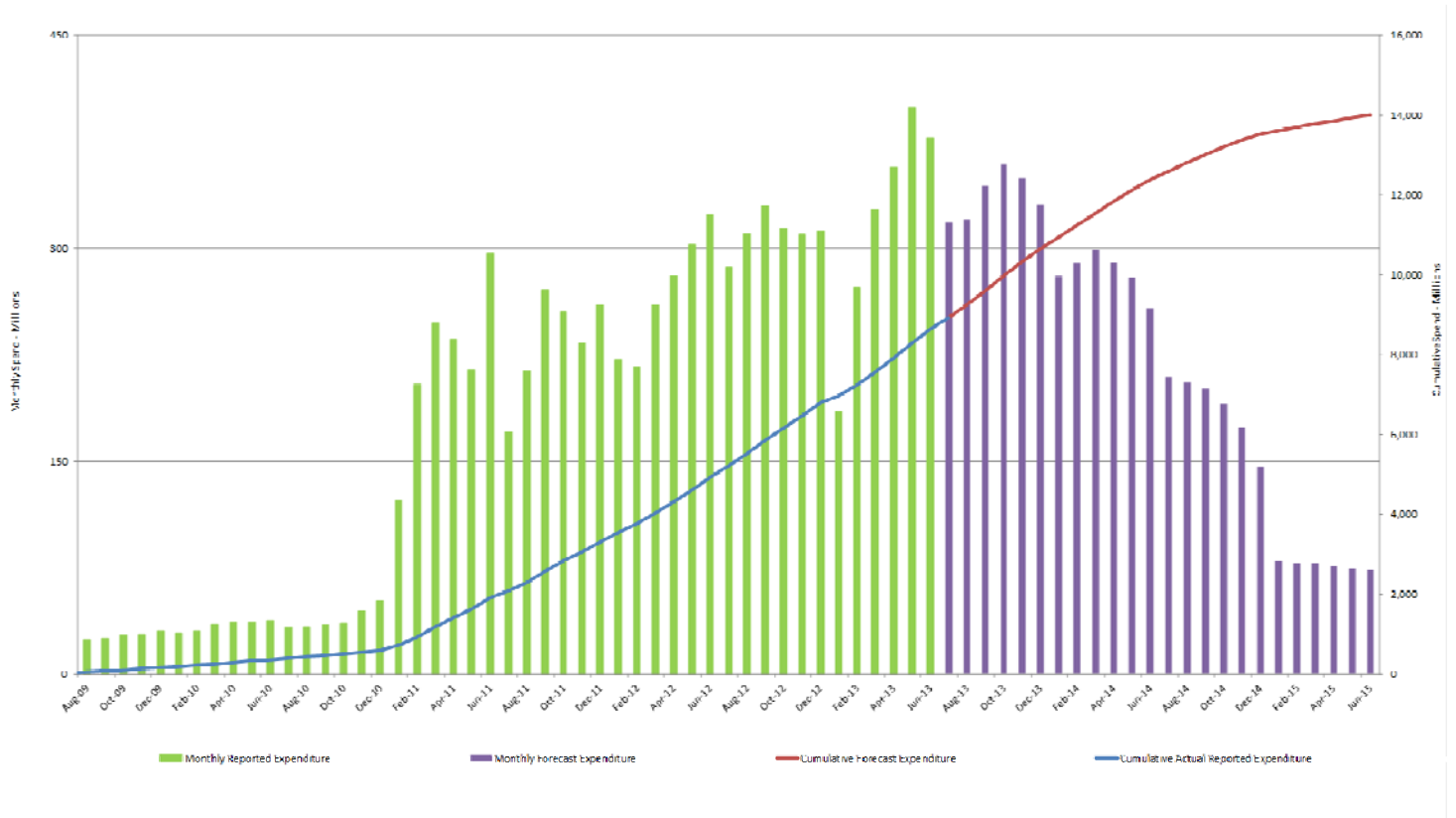
Stage	Description
Works under Assessment	Applications for packages which are currently under assessment by the Authority or are awaiting additional information from the applicant.
Works In Market	Applications for packages which have been approved by the Authority and are in the tender or contract process.
Works in Progress or Delivered	Expenditure as reported to the Authority on packages in progress or delivered.

Source: DTMR at 31 July 2013; and the Authority at 2 September 2013

4.5 Program of works expenditure

The figures below represents the monthly reported expenditure and estimated costs on a combined basis for all events managed by the Authority.

Figure 4.5.1 Combined Program of Works—monthly expenditure



Source: the Authority - cumulative expenditure by delivery agents to 31 July 2013 as reported to the Authority at 2 September 2013; and program estimates per 30 June 2013 NDRRA Review

4.6 Betterment fund status

The \$80 million Betterment fund is a Category D relief measure available to LGAs that have been declared for NDRRA assistance for the flood, storm and cyclone disaster events that occurred in Queensland in early 2013 for the restoration or replacement of essential public assets to a more disaster resilient standard than their pre-disaster standard.

Status

The Betterment Fund was announced in February 2013 following Tropical Cyclone Oswald which caused damage to many of the assets which had been repeatedly damaged and restored from earlier disaster events. Correspondence was received from the Commonwealth in August 2013 agreeing to an extension of the Betterment fund beyond its original coverage of LGAs declared for NDRRA assistance for Tropical Cyclone Oswald to also cover LGAs declared for the two additional disaster events that occurred after Oswald through to June 2013 - Longreach Flood (18 February 2013) and Central and Southern Queensland Low (25 February to 5 March 2013).

Expressions of Interest (EOI) have been received by the Authority from 48 councils with approximately \$1 billion worth of Betterment projects to improve the resilience of infrastructure to natural disasters. Relevant LGAs have been invited to submit more detailed information necessary to progress the Preferred Betterment Proposals through to the next stage.

Under the Betterment Framework, in addition to the normal NDRRA submission assessment process, the Authority is considering the financial and non-financial benefits of the betterment proposal such as possible prior damage, loss of availability and its impact on economic or social factors of the community. Where an LGA has a priority or shovel ready project, additional information was able to be supplied in the EOI to accelerate the process to delivery.

Approvals

As at 31 August 2013, 47 projects with a Betterment component have been approved. These projects have an estimated total cost of more than \$34.4 million, which includes \$17.2 million in Betterment funding and Council contributions of \$2.3 million.

Of these, 19 projects with a Betterment Fund component of \$8.1 million were approved since the last report (2 August 2013) including:

- Hill Road, Bacon Road and Lehman Road (Gympie Regional Council)
- Boar Rocket Road (Tablelands Regional Council)
- River Road (South Burnett Regional Council)
- Weipa-Mapoon Access Road (Mapoon Aboriginal Shire Council)
- Round Hill Road and Turkey Beach Road (Gladstone Regional Council)
- Tribune Street, Bidwill Road, and Arborthree Road (Fraser Coast Regional Council)
- Elim Beach Road (Hope Vale Aboriginal Shire Council)
- Margate Parade seawall, Maba Court footbridge and Wirth Road (Moreton Bay Regional Council)
- Old One Mile Bridge, Keanes Road Bridge and Hancock Bridge (Ipswich City Council)
- Aurukun Access Road (Aurukun Shire Council).

A profile of the Turkey Beach Road and Round Hill Road Betterment projects is provided over the page.



Above: Damage to Margate Parade seawall



Above: Damage to Boar Pocket Road, Tablelands Regional Council



Above: Damage to Bidwill Road, Fraser Coast from 2012 events (left) and 2013 event (right)



Above: Damage to Weipa-Mapoon Access Road

Source: the Authority at 31 August 2013

4.6 Betterment fund status (continued)

Feature betterment project: Gladstone Regional Council Round Hill Road and Turkey Beach Road

Betterment proposals have recently been approved for two projects providing vital links for small communities south-east of Gladstone in the areas of Turkey Beach and Agnes Water.

Turkey Beach Road is a sealed road providing the only access to the coastal village of Turkey Beach, a community of more than 500 people south-east of Gladstone. A washout along the road isolates the community and halts services such as the daily school bus, postal service and emergency services, as well as preventing access to Gladstone. Turkey Beach is also one of Gladstone's most popular destinations for fishing and water sports.

The road was damaged in 2011 and again in 2013. The approved Betterment project is located at a culvert crossing over Sandy Creek. The approaches to the culvert are very susceptible to washouts during heavy rainfall and flooding events and the road itself is often submerged by floodwaters. Council's Betterment project is the installation of concrete batter protection on both sides of the road to prevent washouts affecting the road. The batter protection will include cut off walls and rock placed along the toe of the batter to minimise the likelihood of the concrete being undermined and washed away.

The works are expected to reduce future damage to the road and roadside embankments and therefore reduce the frequency and severity of road closures and limit the isolation of the Turkey Beach community.



Above: Damage to Turkey Creek Road



Left: Damage to Round Hill Road

Round Hill Road is a sealed road providing the only access into the communities of Agnes Water and the Town of 1770, home to more than 2,000 people. Residents of the Agnes Water and Town of 1770 communities rely on Round Hill Road to access employment and commercial facilities at nearby Gladstone and the road is also used to deliver food, services and supplies to the community.

Washout damage was sustained as a result of separate events in 2011, 2012 and 2013.

The downstream side of the road and the culvert crossing at the betterment site has inadequate batter protection. The existing multi cell culverts frequently flood during rain events, washing away the road batter on the downstream side and causing the road to become impassable for extended periods.

The approved Betterment works are expected to provide the required batter protection to prevent the undermining by floodwaters of the road and culvert structures and minimise the duration of future road closures. The continued cost of reconstruction will also be reduced by preventing downstream embankment washouts.

With improved access, residents will be able to attend work and the normal supply of services and supplies by road will mitigate the risk of increased freight costs incurred via sea or air.

The estimated total cost of the two projects is \$1.2 million comprising approximately \$463,000 in reconstruction costs, \$684,000 Betterment funding and Council contribution of approximately \$76,000.

4.7 Iconic projects in reconstructing Queensland*

Project	Value (\$m)	Description	Status
BCC Riverwalk (Cat D)	\$72.0	<p>The Brisbane Riverwalk was a unique pedestrian and bicycle path which linked the city's CBD with the inner suburb of New Farm. It also provided a direct link with tertiary education, entertainment, recreation, commercial, community and residential precincts in the inner city.</p> <p>The floating infrastructure was destroyed by the January 2011 floods and the whole structure was subsequently removed.</p> <p>Following detailed public consultation, the Brisbane City Council decided to replace the previously floating walkway with a fixed, jetty-like 850 metre long structure between New Farm and the CBD. The Riverwalk deck will be approximately 3.4 metres above the average high tide level, high enough to minimise corrosion caused by salt water.</p> <p>The walkway's 37 piles will be anchored into the riverbed, providing the structure with a strong foundation which is more flood-resilient. It will feature 24 hour lighting, separate pedestrian and cyclist paths and shaded rest areas. The design also included a rotating opening span to allow for the passage of vessels to and from moorings. The new alignment will take users further out into the river for most of the walkway to improve the river experience and increase privacy for residents.</p> <p>Funding for the project is being provided through special (Category D) funding under NDRRA arrangements.</p>	<p>The tender to rebuild the Riverwalk was awarded to the John Holland Construction Group in April 2013.</p> <p>Piling works commenced in late July 2013 with a 55m-long barge mobilised in the Brisbane River carrying a 280-tonne crane and a piling rig.</p> <p>Since works commenced, two piles have been poured and removal of the old abutments of the existing floating walkway at both the Merthyr Road and Howard Smith Wharve ends has commenced.</p> <p>Typically, two piles are expected to be constructed each week, weather and construction conditions permitting. The barge will remain in place for the nine months it is expected to undertake the piling works.</p> <p>Completion of the Riverwalk is expected by June 2014, weather permitting.</p>



Left: steel reinforcement for a pile is craned into place.

Right and below right: Piling works underway.

Below: The old abutment at Merthyr Road in the process of being removed.






Left: Artist impression of view from mid-length of new replacement Riverwalk on completion.

(Courtesy: Brisbane City Council)

* Iconic projects represent projects that may be complex or of great significance to the local community.

4.7 Iconic projects in reconstructing Queensland (continued)

Project	Value (\$m)	Description	Status
Clump Point and Dunk Island Jetties (Cat D)	\$5.5	<p>Mission Beach and Dunk Island are tropical tourist destinations located between Cairns and Townsville. The two jetties provide the departure point to local resort islands and the Barrier Reef and are crucial for reviving the area's struggling tourism industry.</p> <p>Both jetties were severely damaged as a result of Cyclone Yasi in February 2011. \$5.5 million was provided for the restoration of the jetties as part of a \$15 million NDRRA exceptional circumstances package for the Cassowary Coast region.</p> <p>The new jetty at Clump Point is being built just south of the existing structure and will be 170m long and 5m wide to accommodate vehicular and pedestrian traffic. All major components are prefabricated off site and transported to site by truck for installation. The old Clump Point jetty will be demolished as part of the works.</p>	<p>Dunk Island jetty reached practical completion on 29 May 2013 when the jetty was handed over to Council. The jetty is now operational and available for use by the public.</p> <p>The dismantling of Old Clump Point jetty is underway and is expected to be completed in September.</p> <p>Completion of Clump Point jetty is expected by the end of September 2013, weather permitting.</p>
<div style="display: flex; justify-content: space-around; align-items: flex-end;"> <div style="text-align: center;">  <p><i>Above: Damage to old Clump Point Jetty, 2011</i></p> </div> <div style="text-align: center;">  <p><i>Above: During construction of new Clump Point Jetty, 2013</i></p> </div> <div style="text-align: center;">  <p><i>Above: New and old Clump Point Jetty, ahead of dismantling of the old jetty, August 2013</i></p> </div> </div>			
Palm Island seawall	\$12.3	<p>The Palm Island foreshore provides the focal point for the island's community. It is the location of culturally significant landmarks and memorials as well as the island's community facilities. The seawall in Challenger Bay provides wave dissipation and erosion mitigation.</p> <p>Damage to the seawall occurred as a result of Cyclone Yasi in February 2011.</p>	<p>Design of the seawall is substantially complete and has been endorsed by Council.</p> <p>Council have advertised for tenders, and completed a compulsory site inspection for tenderers. Tender review is currently underway with recommendations to be made to Council in September 2013. Completion is expected in early 2014.</p>

4.7 Iconic projects in reconstructing Queensland (continued)

Project	Value (\$m)	Description	Status
Cardwell foreshore (Cat D & Cat B)	\$36	<p>The Cardwell foreshore is an important infrastructure project in North Queensland that combines a range of projects intended to restore social, economic, transport and tourist infrastructure in a community that was severely impacted by Tropical Cyclone Yasi.</p> <p>Funding for the project is being provided as restoration of essential public assets (REPA - Category B) and through special (Category D) funding under NDRRA arrangements. Works at Cardwell will include: the reconstruction of a 1.4km two-lane section of the Bruce Highway known as Victoria Street; works on the foreshore, recreation, picnic, and pedestrian facilities; memorial; a roundabout and formal parking.</p> <p>Works to the Coral Sea Memorial and northern playground include dunal revegetation, landscaping installation and concrete pads to seating areas. Paths will also be constructed around the jetty playground and plaza. See Civil Pty Ltd has been awarded the contract for the Reconstructing Cardwell project.</p> <p>A number of community information sessions have been held and a shop front has been in place since August 2012 for access to information about the project.</p>	<p>Practical completion of reconstruction works on the Bruce Highway occurred in August 2013. A road safety audit is scheduled for early September.</p> <p>Soft fall and shade sails have been installed around the play equipment on the foreshore. Landscaping works on the foreshore will continue through to the end of September 2013, subject to weather.</p>



Left and right :
Progress on
reconstruction of
Cardwell foreshore
during August 2013

Grigor Bridge, Conondale	\$4.5	<p>The Grigor Bridge is a major crossing of the Mary River on the Maleny-Kenilworth Road near Conondale, in the Sunshine Coast hinterland. The original single-lane timber Grigor Bridge was built in 1929 and was extensively damaged during flooding in October 2010 and again in January 2011.</p> <p>The total project comprises \$4.5 million of NDRRA funding representing the estimated cost of replacing the original structure, and more than \$5 million additional complementary funding for an additional land and raising the bridge plus associated costs of embankments and culverts. The complementary works are intended to improve flood immunity, safety and traffic capacity.</p> <p>Construction activity in the river is scheduled to accommodate the breeding cycles of a number of iconic species found in the Mary River including the Mary River Turtle and Mary River Cod.</p>	<p>Construction of the new bridge started in March 2013.</p> <p>A team of specialists undertook aquatic clearances and captured freshwater turtles prior to the placement of the rock platforms in the Mary River. Platypus clearances were completed using a flexible cable camera looking for burrows in the river bank.</p> <p>A short sidetrack has been opened to allow motorists to continue accessing the area while works are underway. All piling has been completed for the foundations of the bridge piers and abutments, and work has finished on the headstocks and abutments. The deck units will be installed in September 2013.</p> <p>The project is on track for completion by June 2014.</p>
---------------------------------	-------	---	---



Above: Original Grigor Bridge at Conondale



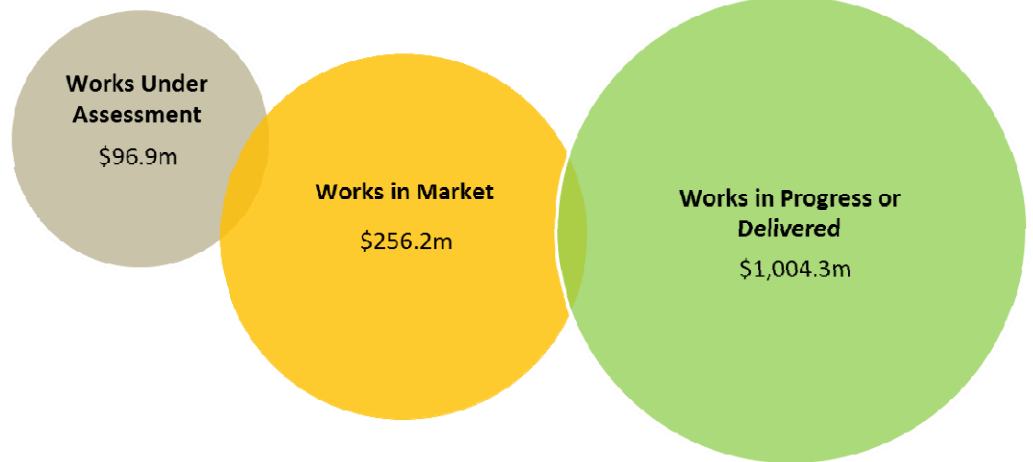
Above: Lifting the cage onto the new bridge pier

Section five: Progress Reports



5.1 Progress of LGAs and DTMR by region (See Appendix A LGA by region map)

5.1.1 Far North Queensland



Program status summary - Far North Queensland

Case example: Tablelands Regional Council Black Mountain Road

Black Mountain Road is a 43km, mostly unsealed gravel road which runs from the Kennedy Highway near Kuranda north to the Mossman–Mount Molloy Road, near Julatten.

Black Mountain Road traverses both Kuranda and Mowbray national parks and is a key access point for visitors to the parks. The road also crosses through native forest, pine plantations and farmland. As a result, the road is used heavily by trucks servicing the local logging industry.

The southern end of Black Mountain Road, near Kuranda, sustained significant damage through loss of gravel from its road surface as a result of the Queensland Monsoonal Flooding events of early 2011. The 18km stretch of road at the Kuranda end of the road is a formed gravel and bitumen road accessible by conventional vehicle.

Restoration works included upgrading the approaches to a culvert bridge, gravel re-sheeting and rock protection works. The placement of rock backfill to reinstate eroded material will prevent future erosion and damage to drainage structures.

The cost of the works was approximately \$690,000.

Work commenced in November 2012 and was completed by March 2013.



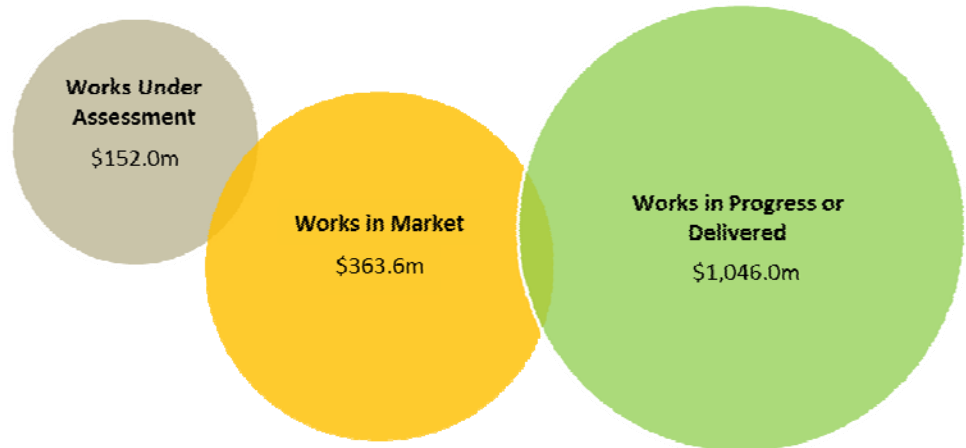
Above: Damage to Black Mountain Road, May 2011

Left: Completed works on Black Mountain Road



5.1 Progress of LGAs and DTMR by region (See Appendix A LGA by region map)

5.1.2 North Queensland



Program status summary - North Queensland

Case example: Hinchinbrook Regional Council Mount Fox Road

Mount Fox Road is adjacent to Mount Fox, Girringun National Park approximately 56km south-west of the township of Ingham via the Herbert River Valley and the Seaview Range.

The road provides access to the National Park, provides a major link from Ingham through to the Kennedy Development Road and western Queensland communities and is the only access point for local residents around the Mount Fox community, located 920 metres above sea level and the site of the local state school.

Mount Fox Road was damaged in numerous places by landslides, uprooted trees and road drainage damage as a result of high winds, soil saturation and road inundations from Cyclone Yasi in February 2011. One package of works comprised seven significantly damaged sites along the road which experienced slumping of slopes, downslope failures and moisture saturation of pavement layers, seals and subgrade resulting in significant safety hazards for users of the mountain road.

The approved scope of works consisted of removal of unsuitable materials and slip debris and installation of stabilisation systems at seven major sites on Mt Fox Road. Council completed the geotechnical slope stabilisation works to these sites for an estimated final cost of approximately \$980,000.

Work commenced in April 2012 and was completed by June 2012.

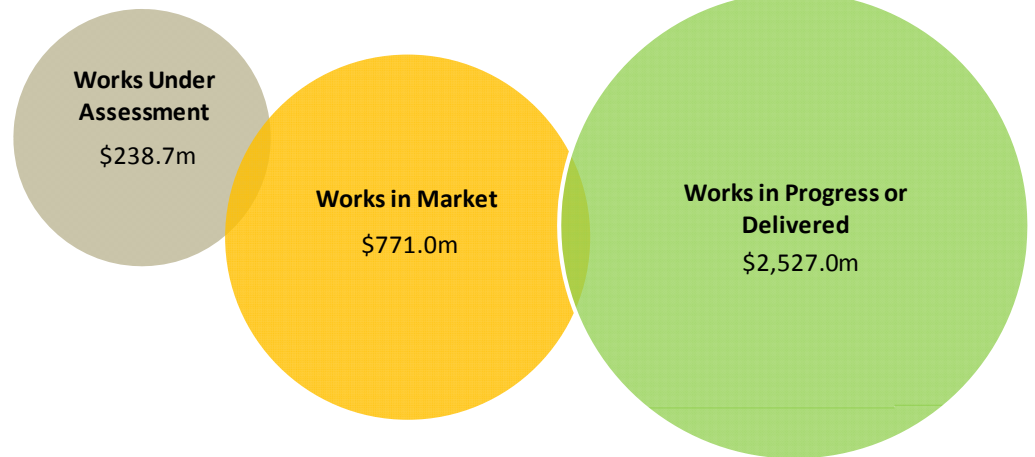


Above: Completed works along Mount Fox Road.

Above: Damage to sections of Mount Fox Road

5.1 Progress of LGAs and DTMR by region (See Appendix A LGA by region map)

5.1.3 Central Queensland



Program status summary - Central Queensland

Case example: Gladstone Regional Council Awoonga Dam Road

Awoonga Dam Road is a rural minor collector road approximately 8.9km long and 5km south of the Bruce Highway servicing over 100 rural properties in the vicinity of Lake Awoonga. 25km south of Gladstone, the site sustained damage from Flooding and Tropical Cyclones Tasha and Anthony (November 2010 – February 2011).

Awoonga Dam Road is the primary entry point to Lake Awoonga, which is the main water supply for the Gladstone region, operated by the Gladstone Area Water Board.

Lake Awoonga is the region's prime destination for fishing, where the local community and tourists can enjoy year round free fishing. The Gladstone Area Water Board also operate a marine fish hatchery as well as offer various recreational activities such as sailing, canoeing and water skiing at the lake. Tourists can hire a houseboat or stay at the caravan park/camping grounds to photograph the wildlife or go bird watching (around 25% of Australia's bird species can be found in the region).

Reconstruction works required the replacement of multiple failed sections of the road, culverts and guide posts.

The cost of the works was approximately \$755,000.

Work commenced in July 2012 and was completed by December 2012.

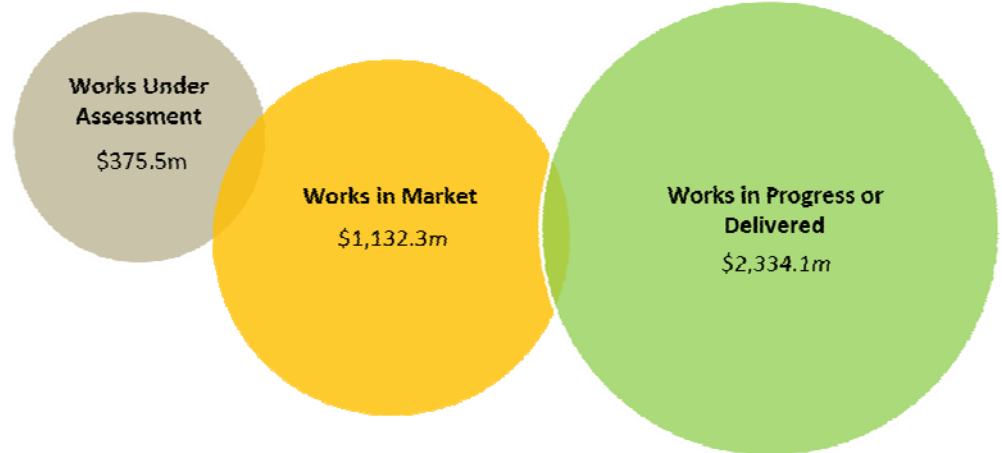


Left: Reconstruction works underway on Awoonga Dam Road

Above: Damage to Awoonga Dam Road

5.1 Progress of LGAs and DTMR by region (See Appendix A LGA by region map)

5.1.4 Southern Queensland



Program status summary - Southern Queensland

Case example: Maranoa Regional Council Repairs to Roma Township

Roma is situated approximately 480km west of Brisbane at the junction of the Carnarvon and Warrego highways and is the centre of a rich pastoral and wheat growing district as well as the rapidly growing oil and gas industry.

Roma was besieged by floodwaters in three separate flood events from 2010 to 2012. The February 2012 flood was the worst in the town's history, with floodwaters inundating 444 homes and reaching areas in town that had not been affected in previous flood events.

By the time floodwaters receded, damage had been sustained to 38 of Roma's roads. Repairing flood damaged roads was identified by Council as a priority to support local community members and businesses to return to normality.

Maranoa Regional Council established its Road Recovery Program to repair roads across the Council area, including in Roma township, with an objective to deliver repairs as efficiently as possible. As part of the Council's overall program to repair damaged assets, Maranoa Regional Council appointed Probuild Civil to repair 38 roads in Roma township damaged in the 2011 and 2012 events.

Repairs included stabilisation, resealing, shoulder and drainage repairs. The total package of reconstruction works in Roma township was completed in June 2013 for an estimated final cost of approximately \$7.5 million.



Above: Roma under flood, 2011



Above: Flood damage to Roma township streets



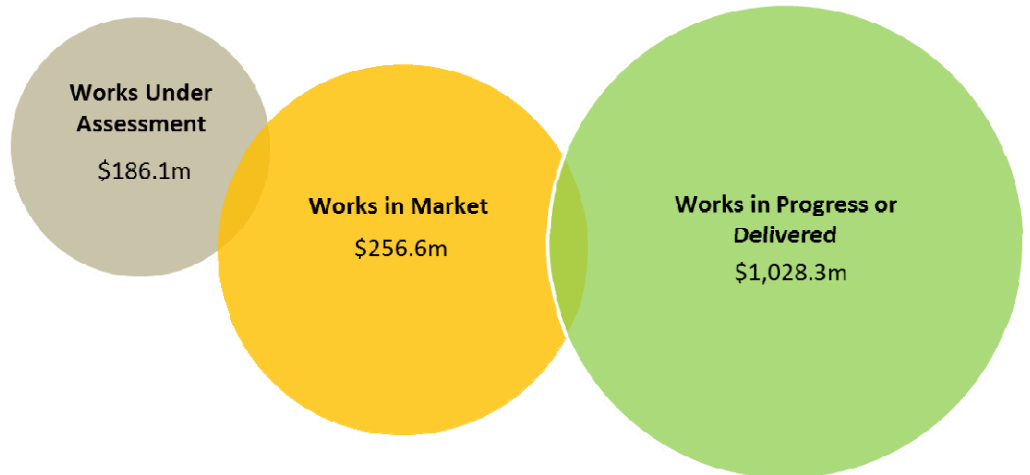
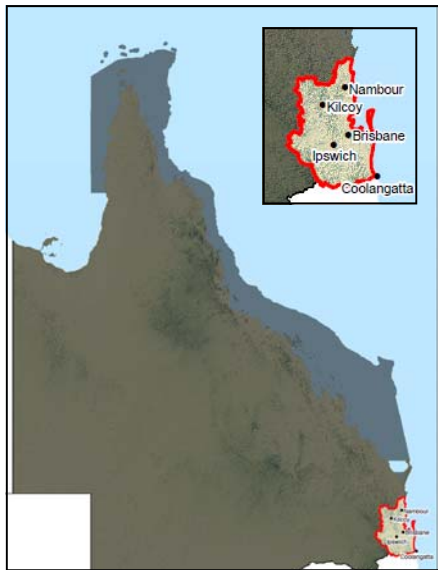
Above: damage and completed works—Whip Street, Roma



Above: damage and completed works—Miscamble St. East, Roma

5.1 Progress of LGAs and DTMR by region (See Appendix A LGA by region map)

5.1.5 South East Queensland



Program status summary - South East Queensland

Case example: Scenic Rim Regional Council Roadvale Harrisville Road, Blantyre

Roadvale Harrisville Road is a collector road located 12km north of the township of Boonah.

Roadvale Harrisville Road crosses a number of ephemeral gullies that flow to the major watercourse of Warrill Creek and Purga Creek and provides essential access to rural producing properties, milk tankers and school buses to nearby townships. The road joins or runs through the localities of Anthony, Blantyre, Roadvale, Kulgun, Milora, Harrisville and Wilson Plains.

Roadvale Harrisville Road sustained significant pavement, shoulder and culvert damage across several areas over a distance of 9km as a result of the flooding event of early 2011. The road suffered additional damage from saturation in the 2012 event with increased rutting and disintegration of the pavement.

The pavement damage consisted of severe rutting in the wheel paths, crocodile cracking, shoving and disintegration of the sealed pavement with scour along the gravel shoulders. The culverts also suffered damage to inlet and outlet structures from the fast flowing flood water in the creeks overtopping the roadway.

Restoration works to Roadvale Harrisville Road included reconstruction of deformed areas, gravel overlay and bitumen seal.

The final cost of the flood damage restoration works was approximately \$714,000. Work commenced in September 2012 and was practically completed in November 2012.



*Above:
Damage to Roadvale Harrisville Road*

*Left:
Completed works on Roadvale Harrisville Road*



5.2 Progress of State-controlled roads and highways

DTMR's Transport Network Reconstruction Program (TNRP) manages the recovery and reconstruction of Queensland's integrated transport system to reconnect Queensland communities and economies following the damage from natural disaster events in 2010, 2011, 2012 and 2013. The transport system includes state-controlled roads, ports, navigation aids and the rail network.

The current state of activity:

- **Roads** – at 31 August 2013, there were 76km of Queensland's state-controlled roads closed or with limited access. Dry weather in most regions is providing good opportunities to reconstruct transport assets.
- **Rail** – 3,100km (43%) of Queensland Rail lines were closed or had limited access due to the natural disaster events in early 2013, and all have been recovered and services resumed.
- **Maritime** – repairs are required to boating infrastructure including jetties following Tropical Cyclone Yasi in 2011. Natural disasters during 2013 damaged or destroyed 348 aids to navigation of which 280 were recovered and 19 temporarily fixed by 30 June 2013. The seven major navigational lead structures and five lateral beacons damaged in the Port of Bundaberg are now fully rebuilt.

Key achievements:

- During July 2013, DTMR expended \$156 million on reconstruction works across the State. Several factors impacted delivery in July, including unseasonal weather across several regions.
- The cumulative spend on reconstruction of the transport network to 31 July 2013 is \$4.4 billion for works resulting from the 2010 to 2013 disaster periods, consisting of \$0.7 billion on recovery works and \$3.7 billion on reconstruction works.
- Since the commencement of the TNRP, projects valued at \$5.8 billion have been sent out to market and contracts for projects valued at \$5.3 billion have been awarded while contracts for projects totalling \$3.2 billion are now complete.
- There was 209km of damaged roads reconstructed in July 2013 bringing the total reconstructed since the program commenced to 5,250km of the total damaged.
- Construction commenced on 47 projects valued at \$169 million in July 2013 including works on the Carnarvon Highway (Roma to Injune), Mt Lindsay Highway, Bunya Highway and Flinders highway at Oakey Creek.
- Of the Mackay/Whitsunday Region's 69 projects across 354 kilometres, 316 kilometres are complete. During July, six kilometres of road achieved progressive completion and the expectation is that all current works will be completed ahead of plan.
- The Downs South West Region successfully relocated six Queensland Bottle Trees (*Brachychiton rupestris*) which are a type A restricted plant under the Nature Conservation Act 1992. The design of the Roma-Taroom Road batters was adapted to avoid two other bottle trees and two near-threatened Golden Tail Geckos were retrieved and relocated.
- As profiled in the July 2013 report, the regular notification process to manage the safe and efficient movement of over-size and over-mass vehicles through work sites continues to generate positive feedback from industry. This information is being used by project and site managers to monitor heavy vehicle movements and assist with planning work schedules.



Left and below: The Queensland Bottle Tree and the rare Golden Tail Gecko, both of which have been successfully relocated as part of NDRRA works on the Roma-Taroom Road



Golden Tail Gecko



Above: Mackay/Whitsunday Region's Collinsville-Elphinstone Road (West package) – sealing works in Glenden

(Source: DTMR 31 July 2013)

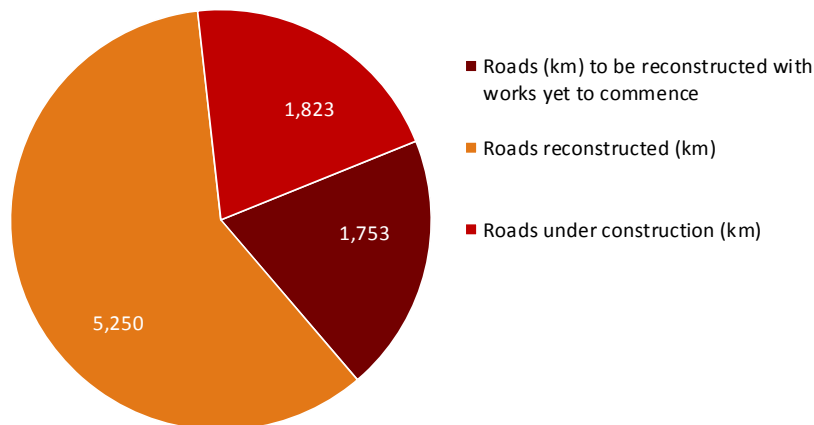
5.2 Progress of State-controlled roads and highways (continued)

Reconstruction of damage

DTMR's reconstruction program was revised during July 2013 and now incorporates reconstruction works from 2013 events. Revisions of the full program of the remaining 2010 to 2012 program of works and incorporating the new scope arising from 2013 natural disasters resulted in the total length of roads to be reconstructed under the TNRP (for 2010 to 2013 events) increasing to 8,826km.

Of the 8,826km of roads which DTMR plans to reconstruct following damage from natural disaster events between 2010 and 2013, 5,250km has been reconstructed to 31 July 2013. A further 1,823km of road is under construction on active works contracts. **See Figure 5.2.1 and TNRP Summary map.**

Fig.5.2.1 Roads Damaged/Reconstructed following natural disasters—2010 to 2013 events



The status of road recovery and reconstruction contracts at 31 July 2013 is:

- \$3.2 billion of projects have been completed for both recovery and reconstruction works (excluding maritime infrastructure) for works resulting from the disaster periods of 2010 to 2013 as follows:
 - \$0.7 billion worth of projects are completed for recovery works;
 - \$2.5 billion worth of projects are completed for reconstruction works;
- \$2.1 billion of reconstruction works are currently underway;
- \$310 million in reconstruction works tenders are currently being assessed for approval;
- \$145 million of reconstruction works contracts are out to tender; and
- \$295 million of reconstruction works projects are being prepared to go to market in the next month.



Above: asphalt overlay south of Seymour River Overflow Bridge, Bruce Highway (Ingham to Innisfail)



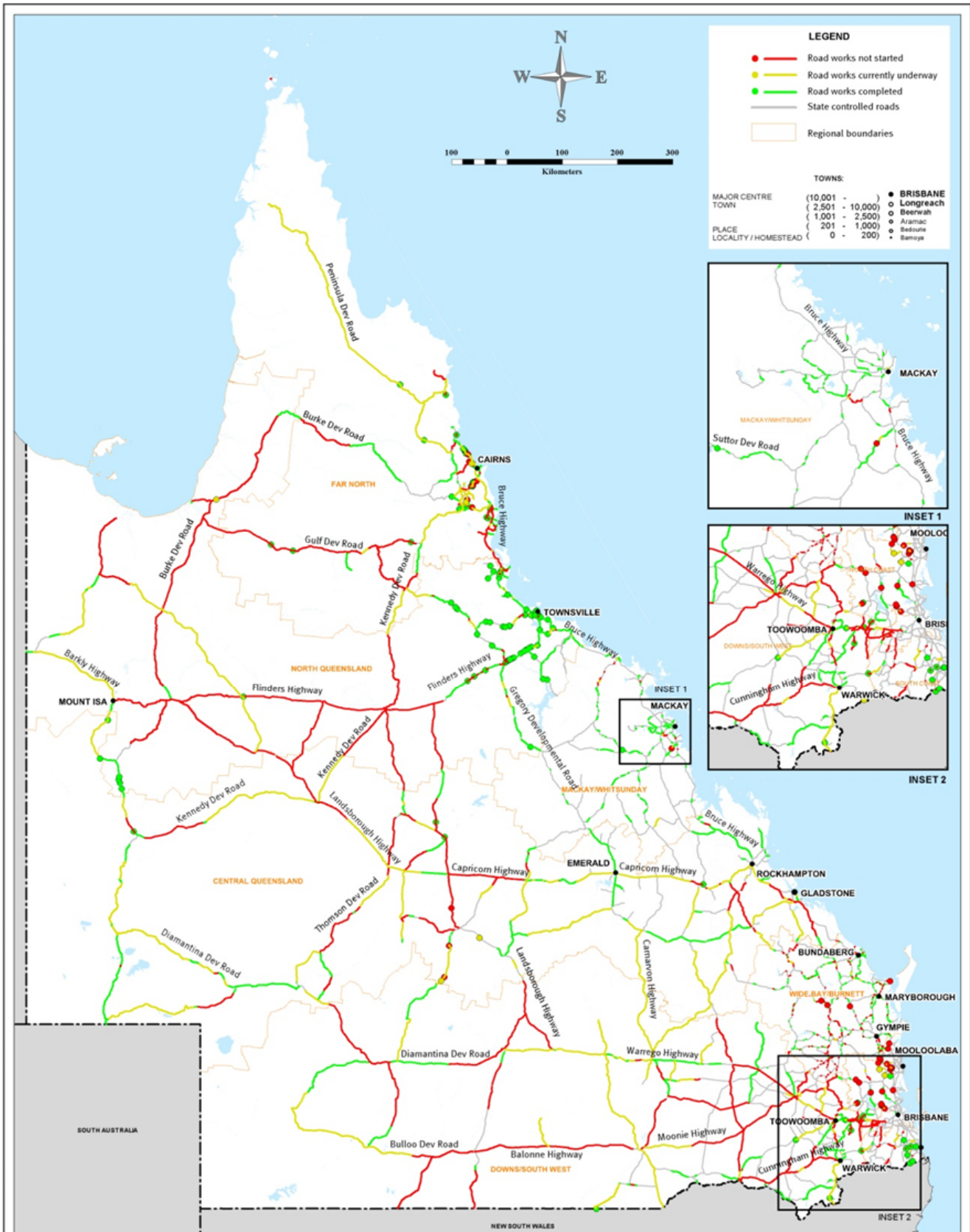
Above: slope stabilisation works below road, Kuranda Range



Above: Roma-Taroom Road - rolling off road base

(Source: DTMR 31 July 2013)

Transport Network Reconstruction Program Summary of Reconstruction Works - July 2013



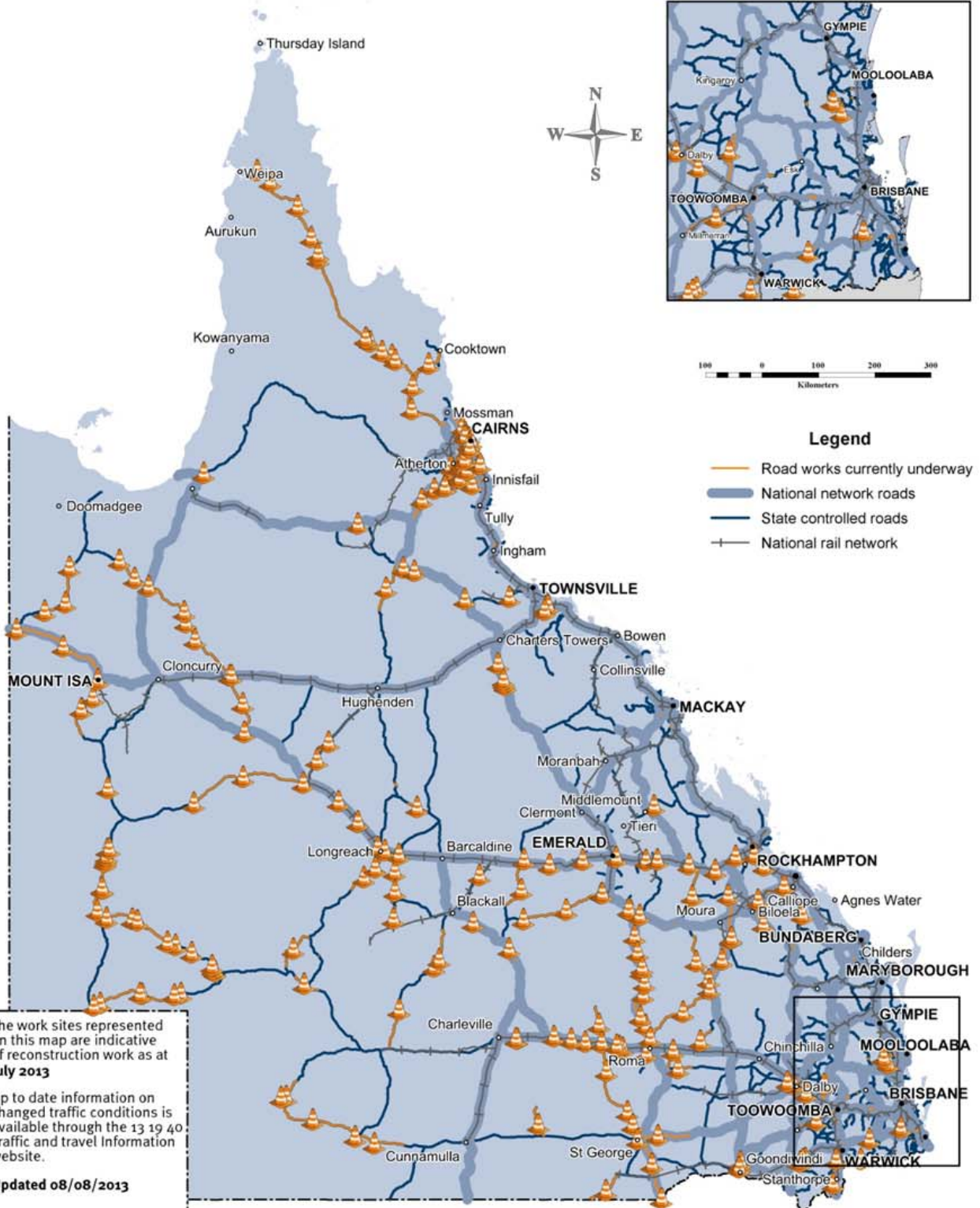
<p>Branch/Unit: TNRP Mapping Section</p> <p>Projection/ Datum: Geocentric Datum of Australia (GDA) 1994, Lat/Long</p> <p>File location: © 100 Fund Implementation\06-04 GIS\TNRP_Mapping_Application\Monthly_Reports\IP6_Tables\Juk TNRP_QLD_SummaryofReconstructionWorks.wor</p>	<p>QUEENSLAND Transport Network Reconstruction Program (TNRP)</p> <p>Summary of Reconstruction Works July 2013</p>	<p> Transport and Main Roads</p> <p>Queensland Government</p> <table style="width: 100%; border: none;"> <tr> <td style="border: none;">Plan No/ Job No:</td> <td style="border: none;">Issue: A</td> <td style="border: none;">Date: 08/08/2013</td> </tr> <tr> <td style="border: none;">Drawn by: TNRP Automation</td> <td colspan="2" style="border: none;">Checked by:</td> </tr> </table>	Plan No/ Job No:	Issue: A	Date: 08/08/2013	Drawn by: TNRP Automation	Checked by:	
Plan No/ Job No:	Issue: A	Date: 08/08/2013						
Drawn by: TNRP Automation	Checked by:							

© The State of Queensland, 2010 © Pitney Bowes Software Pty Ltd, 2010 © QR Limited, 2010. Based on [Dataset - State Digital Road Network (SDRN)] provided with the permission of Pitney Bowes Software Pty Ltd (Current as at 04/10). [Dataset - Rail, Centre Line, May 2010] provided with the permission of QR Limited and other state government datasets. Disclaimer: While every care is taken to ensure the accuracy of this data, Pitney Bowes Software Pty Ltd and/or the State of Queensland and/or QR Limited makes no representations or warranties about its accuracy, reliability, completeness or suitability for any particular purpose and disclaims all responsibility and all liability (including without limitation, liability in negligence) for all expenses, losses, damages (including indirect or consequential damages) and costs which you might incur as a result of the data being inaccurate or incomplete in any way and for any reason.

**DTMR Reconstruction work sites
- July 2013**

Department of Transport and Main Roads

Reconstruction work sites



The work sites represented on this map are indicative of reconstruction work as at July 2013

Up to date information on changed traffic conditions is available through the 13 19 40 Traffic and travel Information website.

Updated 08/08/2013



5.3 Communications

The Authority is focused on building stakeholder confidence in the reconstruction by ensuring consistent and regular communication of public information.

5.3.1 Communicating progress

Media analysis

There has been a total of 325 media items from 1 to 31 August (213 print – 66%, 24 television – 7%, 88 radio – 27%), which reached a cumulative audience of over 8.1 million people with the focus this month being on council recovery, flood subsidies and betterment funding for those regions hardest hit by the 2013 event.

August media coverage saw mentions for those regions still recovering from the 2013 event. There was good coverage of successful Betterment Fund projects in Ipswich, Lockyer Valley and Fraser Coast, with articles appearing in regional media including the Queensland Times and Fraser Coast Chronicle. There was also coverage of the commencement of NDRRA restoration works in Cassowary Coast, Lockyer Valley, Isaac and Goondiwindi, as well as the opening of the Djuan Bridge north of Toowoomba.

There was also substantial radio and print coverage of Minister Crisafulli’s announcement of \$50 million in flood subsidies for flood mitigation and resilience projects in local communities affected by natural disasters.

Engagement activities

- In August, the **Minister for Local Government, Community Recovery and Resilience David Crisafulli** visited the Roma, Mitchell, Gladstone, Bundaberg and Gympie regions to highlight the Government’s flood subsidy for flood mitigation and resilience projects.

Communications

There are a number of methods available to the public to communicate with the Authority.

The Authority’s website provides information to the public and continues to be enhanced with ongoing updates, including the launch of the public Flood Information Portal. There have been a large number of visits to the website since it was launched on 18 February 2011.

At 31 August 2013, total website visits amounted to 345,308 - an increase of 2.7% since last month. *(See Figure 5.3.1)*

In July, the Authority received an additional 40 calls to its dedicated hotline and 207 additional pieces of written correspondence were received. *(See Figure 5.3.2)*

Fig. 5.3.1 Website traffic

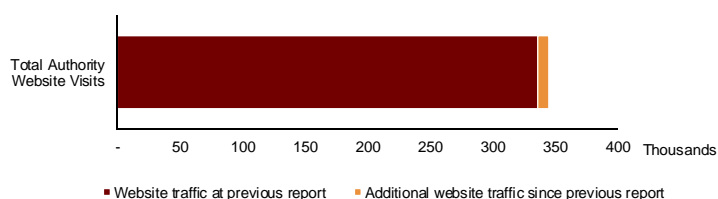
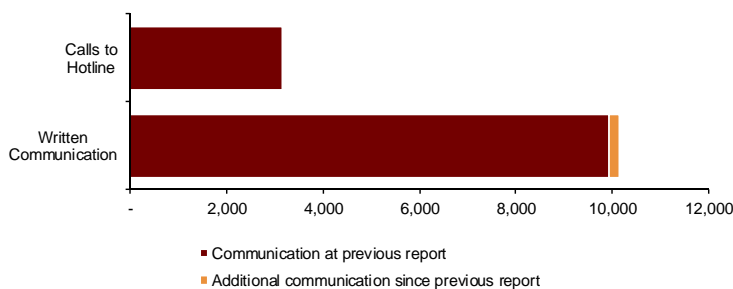


Fig. 5.3.2 Communications



(Source: the Authority at 31 August 2013)

One Mile Bridge gets \$4m funds for repairs

NEARLY \$4 million funding has been granted to repair One Mile Bridge, with tenders due to be called for today.

Ipswich City Council is calling for tenders to restore the road surface and embankments.

The announcement comes a day after the state and federal governments approved \$3.9m in funding for repairs and changes to the bridge.

Of the funding \$1.9m will be set aside for "betterment projects" to ensure the bridge can better handle future floods.

Division 8 councillor Charlie Pisasale said the delay to repairs was unfortunate, but unavoidable, without funding arrangements.

"The delay was due to finalising negotiations for funding approvals and

completing a more resilient bridge repair design," he said.

"The successful tender is due to be announced in mid to late September with work to begin in October."

Ipswich West MP Sean Choat said the state and federal funding would mean \$1.5m for repairs, \$1.9m for betterment and a further contribution of \$500,000 from the State Government.

"The idea is to give them a little more money so, when they repair it, they're not just doing what they've done twice before," he said.

Mr Choat said there would be a new surface on the road and improvements made to the river banks around the bridge.

Since the January floods the bridge has been reduced to a single lane out of the CBD.

Queensland Times, 3 August 2013

Marking time for the bridge

LINE marking will be carried out in the coming days on the O.O.Madsen Bridge, which had flood repair work completed last week.

There will be more flood-related repair works to be carried out on several sites along the Cunningham Hwy between Warwick and Inglewood over the next few months.

Flood repair work continues on the New England Hwy between Warwick and Wallangarra and is due to finish in November.

Spring Creek Rd near Browns Falls, Killarney, is expected to re-open to two-way traffic on August 25.

The \$2.2 million project involved the drilling and installation of piles on the downhill side of the road to stabilise the embankment and allow the surface to be rebuilt to full width after a landslide.

These works are being delivered under Natural Disaster Relief and Recovery Arrangements (NDRRA), a joint federal and state initiative.

For up-to-date traffic information visit www.131940.qld.gov.au or call 13 19 40.

Warwick Daily News, 12 August 2013

Work set to begin on 20 roads

CYCLONE recovery works will begin soon on more than 20 roads across the Cassowary Coast region.

They include Warrami Road and Murray Upper Road in the Tully region, Seres Road at Mena Creek, No 6 Branch Road in South Johnstone and Ash Street, Flying Fish Point Road and Mourilyan Road in the Innisfail region. These projects are among more than 700

in Cassowary Coast Regional Council's disaster recovery program, ranging from road, bridge and culvert works to jetty, wharf, airfield, parks, landfill, water, sewerage and landslip repairs.

Works Director David Trotter said \$145.4 million worth of works, funded by the Federal and State Government through their Natural Disaster Relief and Recovery Arrangements, were underway

across the region with many projects already completed.

The disaster recovery work is continuing while council begins its \$27.2 million 2013-14 capital works program. The first capital works program projects range from drainage improvements on Reynolds Road at Innisfail to a water trunk main replacement on the Tully-Mission Beach Road at Mission Beach.

Work starts on fixing Jimna Range

Motorists and residents may have noticed changes on local roads with crews starting works on two key roads in the Nanango electorate.

Member for Nanango Deb Frecklington said the arrival of work crews at Kilcoy-Murgon and Esk-Hampton Roads was a welcome sight for the community.



A landslide which is part of the works to be done on the Jimna Range

"These roads were significantly damaged during the January 2011 floods and have been operating at reduced capacity ever since," Mrs Frecklington said.

"Esk-Hampton Road sustained extensive damage, with Redbank Crossing number 3 being replaced and repair works already completed at the Hampton end of the road.

"At the site of the current work between Slaughter and Regent Roads, emergency repairs were completed on landslip damage in early 2011 and barriers installed to enable traffic to continue safely using both lanes.

"Kilcoy-Murgon Road on the Jimna Range also sustained landslip damage with a number of sites limited to one lane over a 2km stretch of road. Major excavation will be done at Esk-Hampton to move the road away from the slip zones, and slope stabilisation, repairs and pavement reconstruction would happen at both sites."

"Every effort will be made to minimise disruptions while work was being completed. Traffic control is in place to manage the flow of traffic at both sites, which are now operating as one lane while construction is underway," she said.

Work on Esk-Hampton and Kilcoy-Murgon roads will be finished in early 2014. The program of works is being delivered under the Natural Disaster Relief and Recovery Arrangements, a joint federal and state initiative. Under these arrangements, the Australian Government provides 75 per cent of the funding, with 25 per cent from the Queensland Government.

Kilcoy Sentinel, 8 August 2013

FLOOD RECOVERY

ABOUT 60 locals gathered under sunny skies to celebrate another step in the flood recovery.

The reconstructed Djuan Bridge on Djuan Rd, 13km north of Crows Nest, was officially opened on Saturday morning.

The old wooden structure was condemned after the 2010/2011 floods.

Senator Claire Moore, Member for Nanango Deb Frecklington and Toowoomba Regional Council Mayor Paul Antonio were present to show their support at the opening.

The bridge was reconstructed under TRC's Natural Disaster Relief and Recovery Arrangements, which were



Glenda and Ray Brown with Member for Nanango Deb Frecklington (centre) at the bridge opening.

PHOTO: CONTRIBUTED

funded 75% by the Federal Government and 25% by the State Government.

Toowoomba Chronicle, 5 August 2013

Innisfail Advocate, 14 August 2013



REPAIRED: A retaining wall has been built below Mourilyan Road in Innisfail as part of a landslip stabilisation project in the wake of Cyclone Yasi. Picture: Supplied

Area of landslip stabilised

AN INNISFAIL landslip area has undergone major stabilisation works as part of Cassowary Coast Regional Council's cyclone recovery program.

The \$549,000 project at Mourilyan Road near the water tower has included the construction of a 46m

retaining wall below the road, kerbing and re-establishment of the full road width.

Grouted steel rods have been inserted at the landslip area and a geo-fabric covered retaining wall, which is being revegetated, has been built. The project is part of the council's \$145.4 million

cyclone recovery program, funded by the Federal and State governments through the Natural Disaster Relief and Recovery Arrangements.

A fence will be added in coming weeks and there will be more revegetation work to complete the Mourilyan Road project.

\$65 million to fix damaged roads

Brandon Livesay

NORTH Burnett Regional Council will fork out \$65 million to fix flood-damaged roads.

The council has awarded two contracts for the flood restoration works funded by the Queensland Reconstruction Authority.

Civil Mining and Construction Pty Ltd has been awarded the northern roads and drainage package, and Fulton Hogan Construction Pty Ltd was awarded the southern roads and drainage package.

Mayor Don Waugh said work would start this month and would continue for 12 months, weather permitting.

"This is a significant step towards the repair of council's road network," Cr Waugh said.

"The contractors will prioritise works based on school bus routes, B-double and freight routes, and traffic volumes."

Cr Waugh said the restoration works would

benefit North Burnett contractors.

"We've made a stipulation that they use local contractors as much as possible," Cr Waugh said.

"It is a requirement of the tender contract."

Cr Waugh said the number of contractors that would be employed was not yet finalised.

Sixteen roads and eight bridges are closed, 11 bridges have imposed load limits and 38 roads warn drivers to use caution.

The QRA has approved more than \$100 million in funding for North Burnett flood restoration repair, and a further works package is yet to be implemented for bridge replacements.

North Burnett's roads

- Total road length: 4019km
- Total roads assessed as damaged: 3394
- Kilometres assessed as damaged: 388km
- Percentage of road damage: 10%

Central and North Burnett Times, 8 August 2013

Warwick Daily News, 30 August 2013

Spring Creek Rd back to normal after works

FLOOD-related roadworks on Spring Creek Rd have been completed this week and all traffic restrictions have now been removed.

The Department of Transport and Main Roads advised that the works were completed 12km north-east of Queen Mary Falls.

A TMR spokesman confirmed that more works were

now in the pipeline.

"Nearly works in the Browns Falls area are completed and will require a final seal in the coming months when the weather conditions suit the treatment," he said.

"For the safety of road users, speed restrictions will be required until this time."

"TMR sincerely thanks the community for its patience

while these essential reconstruction works were completed."

These road reconstruction works were delivered through Natural Disaster Relief and Recovery Arrangements, under which the Australian Government provides 25% of the funding, with 25% from the Queensland Government.

For more information about flood-related roadworks in the Darling Downs area, phone 1800 962 397 during business hours, or email reconstruction@dmr.qld.gov.au

For up-to-date information on changed traffic conditions, visit www.131940.qld.gov.au or call 13 19 40.



OPEN: Commuters can now enjoy this view now Spring Creek Road is open to traffic. PHOTO: SHAWN GARVEY

Roads to stay dry in floods

Hannah Busch

THREE Fraser Coast roads will be upgraded to withstand future floods, thanks to the latest round of state and Federal Government betterment funds.

Local Government Minister David Crisafulli was in Maryborough yesterday, where he announced Tribune Rd in Maryborough, Bidwill Rd at Jumbo Creek and Arbrothree Rd in Glenwood would all be upgraded.

He said Fraser Coast Council would receive more than \$680,000 from the betterment fund for the three projects.

Arbrothree Rd in Glen-

wood would receive \$52,000 from the betterment fund, \$20,000 from the Fraser Coast Council and a further \$61,000 from the National Disaster Relief and Recovery Arrangements.

Tribune St, often used as an access route for cane farmers, will receive \$100,000 from the betterment fund.

It will get another \$15,000 from the council and \$93,000 from the NDRRA.

Pavement on Bidwill Rd will be replaced with a concrete floodway.

The project has \$79,000 from the betterment fund and

\$25,000 from the council. Similar betterment projects were also announced earlier this year for roads in Poona, Sunshine Acres, Oakhurst, Glenwood and River Heads.

The new projects will mean more than \$2.5 million of the \$80 million betterment fund will flow to the Fraser Coast.

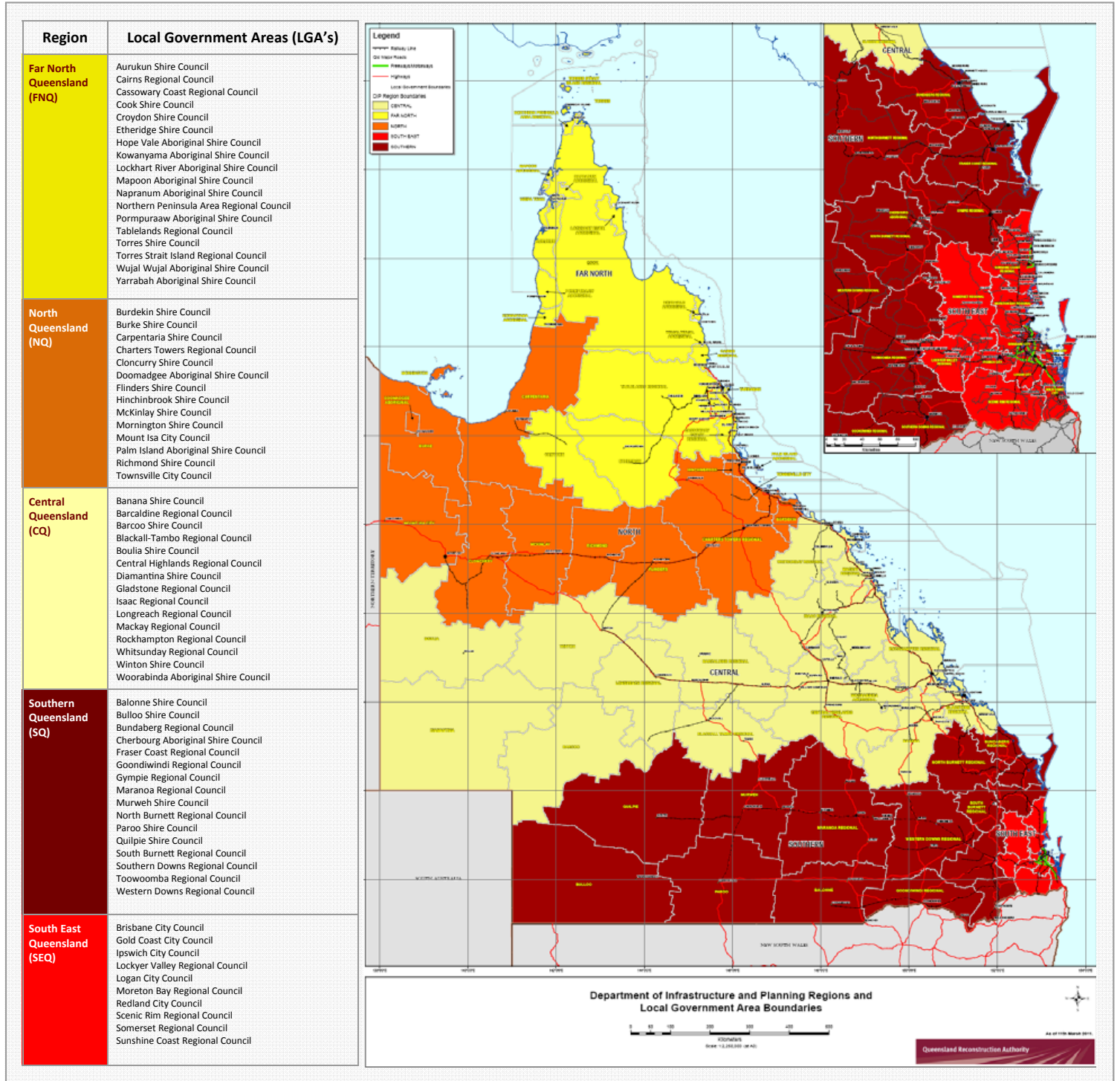
The council applied for more than \$35 million worth of betterment projects.

The betterment fund was created by the State Government.

Fraser Coast Chronicle, 29 August 2013

Appendices

Appendix A: Local Government Areas by Region



Appendix B: Disaster Recovery Coordinator Regions - Tropical Cyclone Oswald

