

QUEENSLAND RECONSTRUCTION AUTHORITY

Monthly Report

March 2013

Document details:

Security classification	Public
Date of review of security classification	March 2013
Authority	Queensland Reconstruction Authority
Author	Chief Executive Officer
Document status	Final
Version	1.0

Contact for Enquiries:

All enquiries regarding this document should be directed to:

Queensland Reconstruction Authority

*Phone the call centre - **1800 110 841***

Mailing Address

Queensland Reconstruction Authority

PO Box 15428

City East Q 4002

Alternatively, contact the Queensland Reconstruction Authority by emailing info@qldra.org.au

Licence

This material is licensed under a [Creative Commons - Attribution 3.0 Australia licence](#).



The Queensland Reconstruction Authority requests attribution in the following manner:

© The State of Queensland (Queensland Reconstruction Authority) 2011-2015

Information security

This document has been classified using the [Queensland Government Information Security Classification Framework \(QGISC\)](#) as PUBLIC and will be managed according to the requirements of the QGISC.

Message from the Chief Executive Officer

Major General Richard Wilson AO
Chairman
Queensland Reconstruction Authority

Dear Major General Wilson

It is with pleasure that I present the March 2013 Monthly Report – the twenty-fifth report to the Board of the Queensland Reconstruction Authority (the Authority).

The Authority was established under the *Queensland Reconstruction Authority Act 2011* following the unprecedented natural disasters which struck Queensland over the summer months of 2010-11. The Authority is charged with managing and coordinating the Government's program of infrastructure renewal and recovery within disaster-affected communities, and the Authority's role is focused on working with our state and local government partners to deliver best practice expenditure of public reconstruction funds.

Following the widespread damage caused by ex-Tropical Cyclone Oswald in early 2013, the jurisdiction of the Authority has been expanded by the *Queensland Reconstruction Authority Amendment Bill 2013* to cover this and other disaster events which have occurred in the 2012-13 disaster event period, extend the term of the Authority until 30 June 2015 and provide the Authority with a stronger focus on community resilience.

As such, the Authority will continue to monitor the progress of reconstruction for current disaster events as well as provide the resourcing and support necessary to build the momentum of reconstruction and enhance the resilience of communities for potential disaster events.

The March report provides an update of the impact of Tropical Cyclone Oswald and introduces the Queensland 2013 Flood Recovery Plan (Recovery Plan) prepared in response to the flood and damage impacts of Tropical Cyclone Oswald. The Recovery Plan, was approved by the Premier on 25 February 2013, and provides strategic guidance for the coordination and management of recovery, reconstruction and community resilience activities following the event. The report also introduces the roles and responsibilities of the five functional recovery groups established under the Recovery Plan:

- Human and social
- Economic
- Environment
- Building, and
- Roads and Transport.

Future reports will provide updates on the progress of recovery and reconstruction phases against the key metrics for each of the functional recovery groups.

The March report also provides an update on progress and countdown to completion of the reconstruction program of those works managed by the Authority prior to Tropical Cyclone Oswald. The impact of Tropical Cyclone Oswald and other 2012-13 events on the Authority's program and pipeline of works is currently under assessment and will be reflected in future reports.

The Pipeline of works for events actively managed by the Authority immediately prior to Tropical Cyclone Oswald (2009 to 2012) has an estimated program value of \$12.2 billion of which \$10.9 billion has now been administered in the program of works comprising:

- \$1.0 billion of works is in 'Works under Assessment';
- \$3.0 billion of works is in 'Works in Market'; and
- \$6.8 billion of works is in 'Works in Progress or Delivered'.

I commend the report to you and recommend its release to the Minister and the public pursuant to Section 41 of the *Queensland Reconstruction Authority Act 2011*.

Yours sincerely



Graeme Newton
Chief Executive Officer
Queensland Reconstruction Authority

Contents

Executive Summary	
1.0 Introduction	1
1.1 Background	2
1.2 Purpose	2
1.3 Timing	2
2.0 Disaster Assistance	3
2.1 Disaster assistance by event period	4
3.0 Framing the Challenge	5
3.1 Events managed by the Authority	6
3.2 Tropical Cyclone Oswald	7
3.2.1 Scale of impact	7
3.2.2 Recovery and reconstruction	8
3.2.3 Recovery case example	9
3.3 Queensland 2013 Flood Recovery Plan	10
3.4 Functional Recovery Groups	11
3.4.1 Human and social	11
3.4.2 Economic	11
3.4.3 Environment	11
3.4.4 Building recovery	12
3.4.5 Roads and transport	12
4.0 Program Status	13
4.1 Recent developments	14
4.2 Looking forward	14
4.3 Combined program progress	14
4.4 State-wide pipeline of works	15
4.5 Program of works expenditure	16
4.6 Iconic projects in reconstructing Queensland	17
5.0 Progress Reports	22
5.1 Progress of LGAs & DTMR by region	23
5.1.1 Far North Queensland	23
5.1.2 North Queensland	24
5.1.3 Central Queensland	25
5.1.4 Southern Queensland	26
5.1.5 South East Queensland	27
5.2 Progress of State-controlled roads and highways	28
5.3 Cyclone shelter project	33
5.4 Communications	34
5.4.1 Communicating progress	34
5.4.2 Media reports	35
Appendices	36
Appendix A: Queensland disaster framework	37
Appendix B: Local Government Areas by Region	38
Appendix C: Disaster Recovery Regions - Tropical Cyclone Oswald	39

Section one:
Introduction



1.0 Introduction

1.1 Background

Between November 2010 and April 2011, Queensland was struck by a series of natural disasters. Extensive flooding caused by periods of extremely heavy rainfall, destruction caused by a number of storm cells including Cyclones Tasha, Anthony and Severe Tropical Cyclone Yasi, and subsequent monsoonal flooding, resulted in all Queensland being declared as disaster affected.

On 21 February 2011 in response to the disaster events, the Queensland Government established the Queensland Reconstruction Authority (the Authority) under the *Queensland Reconstruction Act 2011*. The Authority's role was subsequently extended to cover historical and continuing disaster events in Queensland and, on 26 September 2012, the State Government announced the initial extension of the term of the Authority's operations to June 2014.

The Authority has since been given responsibility to administer Natural Disaster Relief and Recovery Arrangements (NDRRA) for the large scale natural disaster caused by Tropical Cyclone Oswald in late January 2013 and additional events which have occurred in the 2012-13 disaster event period. The *Queensland Reconstruction Authority Amendment Bill 2013* was subsequently passed on 14 February 2013 to expand the jurisdiction of the Authority to include these recent events, extend the term of the Authority to 30 June 2015 and provide the Authority with a stronger focus on community resilience.

1.2 Purpose

The Authority's mission is **to reconnect, rebuild and improve Queensland communities and its economy**.

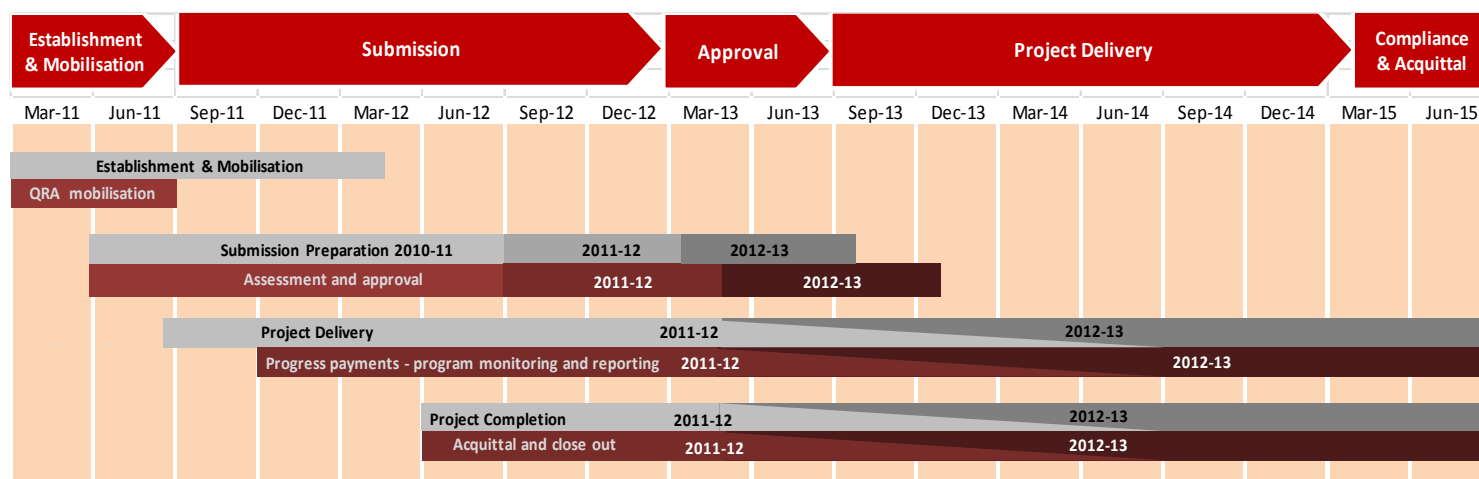
The Authority operates with reference to recovery and reconstruction plans established by the State in response to the 2011 disaster events and more recently following Tropical Cyclone Oswald. The Queensland 2013 Flood Recovery Plan (Recovery Plan), approved on 25 February 2013, provides strategic guidance for the coordination and management of recovery, reconstruction and community resilience activities undertaken across the State after Tropical Cyclone Oswald.

Five functional recovery groups have been established under the Recovery Plan to manage and coordinate recovery initiatives across the impacted regions. The Authority provides support to, and report on progress of the functional recovery groups against their key tasks with decentralised responsibility for delivery across responsible agencies for each functional recovery group. The functional recovery groups follow on from the lines of reconstruction established following the 2011 disaster events, the key tasks of which are now substantially complete.

1.3 Timing

The focus of the reconstruction effort for the program of works existing prior to Tropical Cyclone Oswald has shifted from approving submissions to ensuring project delivery, with the bulk of reconstruction work occurring over the next 18 months.

Following Tropical Cyclone Oswald, the Authority is supporting the State's response to reconstruction with a focus on streamlining the submission and application approval process and then ensuring project delivery to complete the associated reconstruction work with an emphasis on improving the resilience of communities for potential disaster events.



Source: the Authority at February 2013

Section two:
Disaster Assistance

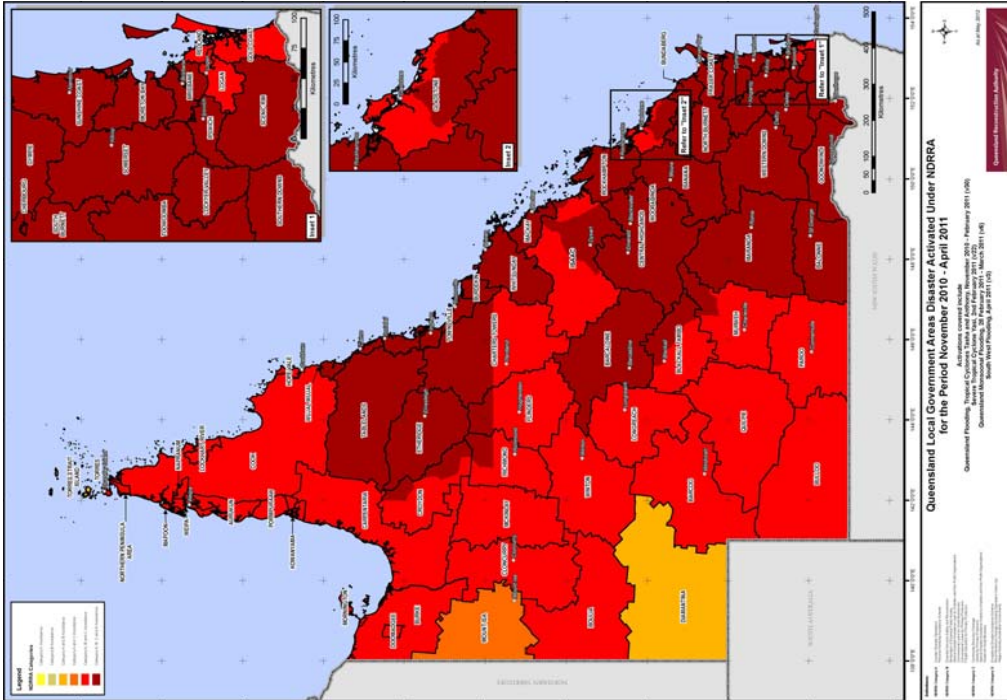


2.0 Disaster Assistance

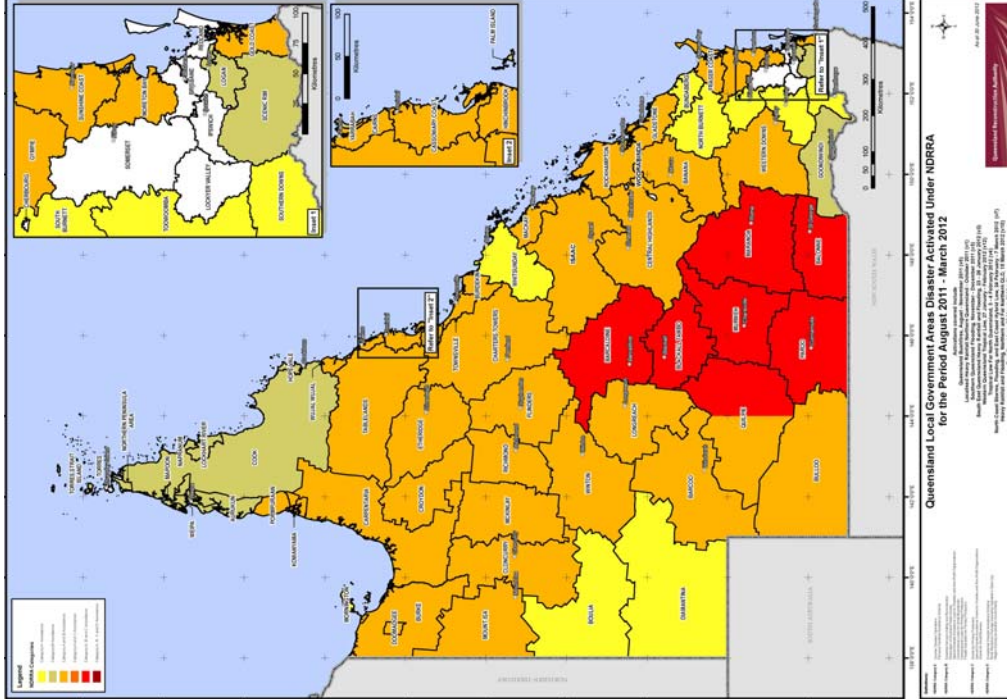
2.1 Disaster assistance by event period

The figures below sets out the LGAs activated under NDRRA for each event period managed by the Authority under the Queensland Disaster Assistance Framework described in **Appendix A**. Also described in **Appendix A** are the disaster event periods.

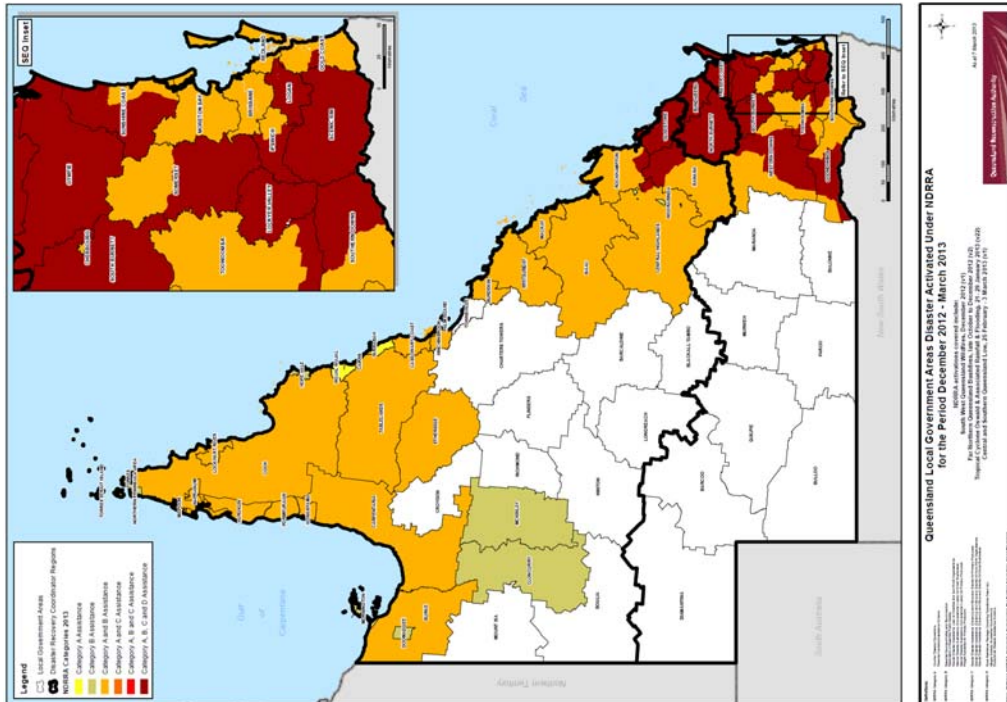
Map 1 - LGAs disaster activated under NDRRA for 2010-2011 events



Map 2 - LGAs disaster activated under NDRRA for 2011-2012 events



Map 3 - LGAs disaster activated under NDRRA for 2012-2013 events



* Different funding periods exist for each Category type.

Section three: Framing the challenge



3.0 Framing the Challenge

3.1 Events managed by the Authority

The Authority has responsibility to administer NDRRA relief measures for historical and continuing disaster events in Queensland.

The Authority currently manages and coordinates the infrastructure reconstruction and recovery for 17 disaster events activated for NDRRA relief measures since the Authority's establishment in February 2011 and the remaining program of works for an additional 16 disaster events which occurred prior to the Authority's establishment.

2012-2013 natural disaster events managed by the Authority:

- South West Queensland Wildfires, 21 December 2012
- Far Northern Queensland Bushfires, late October - December 2012
- Tropical Cyclone Oswald and Associated Rainfall and Flooding, 21-29 January 2013
- Central and Southern Queensland Low, 25 February - 3 March 2013

2011-2012 natural disaster events managed by the Authority:

- Queensland Bushfires, August to October 2011
- Localised Heavy Rainfall Northern Queensland, October 2011
- Southern Queensland Flooding, November to December 2011
- South East Queensland Heavy Rainfall and flooding, 23- 26 January 2012
- Western Queensland Tropical Low, 27 January to February 2012
- Far Northern Queensland Tropical Low, 3-4 February 2012
- North Coast Queensland Storms and flooding and East Coast Hybrid Low, 24 February - 7 March 2012
- Northern and Far Northern Queensland Heavy Rainfall & flooding, 15 March 2012
- East Coast Low, 22 March 2012

2010-2011 natural disaster events managed by the Authority:

- Queensland Flooding and Tropical Cyclones Tasha and Anthony, November 2010 to February 2011
- Severe Tropical Cyclone Yasi on 2 February 2011
- Queensland Monsoonal Flooding Event, 28 February 2011,
- South West Flooding, April 2011

2007-2010 natural disaster events managed by the Authority that have open submissions for damage:

- South East and North Coast Queensland East Coast Low, August 2007
- South West Queensland storms and flooding, 23-30 November 2007
- Central Western Queensland storms and flooding, 22-30 December 2007
- South East Queensland East Coast Low, 27 December 2007 - 7 January 2008
- Queensland Monsoonal flooding, January 2008
- Queensland Monsoonal flooding, February - March 2008
- South West Queensland flooding, June 2008
- Queensland storms and associated flooding, 16-22 November 2008
- Queensland Monsoonal flooding and Tropical Cyclone Charlotte and Ellie, January - February 2009
- South East Queensland Low, May 2009
- Queensland Bushfires, September – October 2009
- South West Flooding, 20 – 25 November 2009
- Northern, Central and South West Queensland Flooding, 22 December 2009 to 8 January 2010
- Queensland Monsoonal Flooding and Tropical Cyclones Olga, Neville, Ului and Paul, January to April 2010
- South West Queensland Low and Associated Flooding, September 2010
- 2010 South East Queensland Flooding, 9-12 October 2010

3.2 Tropical Cyclone Oswald

3.2.1 Scale of impact

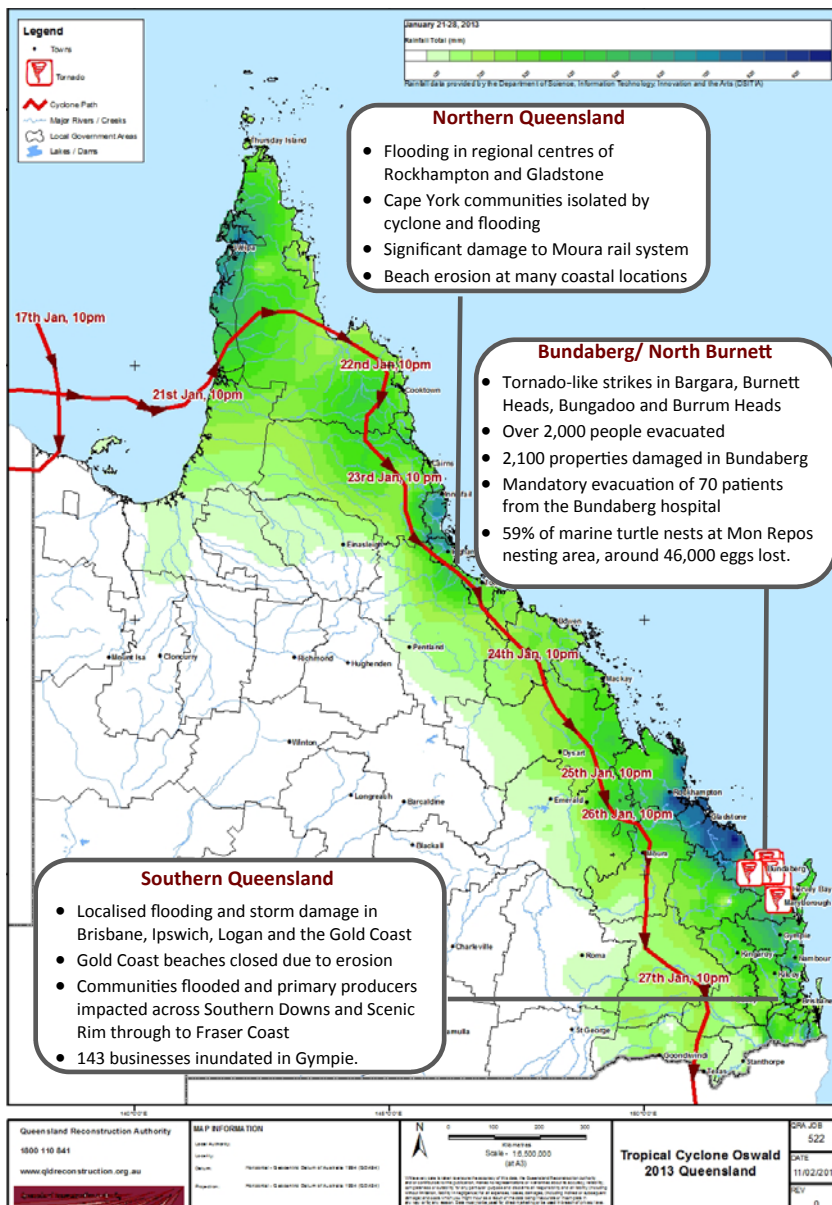
Tropical Cyclone Oswald crossed the western coast of Cape York Peninsula as a Category 1 cyclone shortly after midnight on 22 January 2013. Weakening to a low pressure system, ex-Tropical Cyclone Oswald moved inland and down the coast over the following seven days producing damaging winds, including mini-tornados, extreme rainfall, and flooding across the State before extending into New South Wales. Refer **Map 4** for the approximate path of the cyclone/ex-cyclone and a snapshot of some of the regional impacts of the devastating event.

The flood events and other effects of Tropical Cyclone Oswald had a catastrophic effect on Queensland. Tragically, six deaths occurred that were related to the weather event. The effects were felt throughout the State with **54** LGAs currently declared as eligible for NDRRA financial relief measures from the event with the most severe impacts centred on the Bundaberg and North Burnett regions.

Bundaberg city passed its previous highest recorded flood level, peaking at 9.53 metres, with North Bundaberg and other low-lying areas of the city most affected. The surrounding regions were also subjected to tornado-like winds causing injuries and damage to homes and businesses in Burnett Heads, Bargara, Coonarr and Burrum Heads.

Regions which were particularly devastated by the 2011 floods were not spared, with communities in the Lockyer Valley, including Laidley and Grantham, again impacted by flood waters.

Map 4 - Approximate path of Tropical Cyclone Oswald/ex-Tropical Cyclone Oswald



State-wide scale and scope

- in excess of 2,000 residents evacuated in the Bundaberg region



- over 4,000 properties damaged*, of which more than 2,000 have been deemed uninhabitable (Source: the Authority)

- more than 390,000 homes and businesses without power (Source: Ergon, Energex)



- approximately 750 businesses affected across the State (Source: the Recovery Plan)

- insurance claims costing approximately \$742 million (Insurance Council Australia 31 January 2013)

- widespread isolation of communities

- more than 5,800 kms (17.5%) of State controlled roads closed (Source: DTMR)



- 2,800 kms (39%) of the State rail network damaged or closed, including coal supply links from southern and central Bowen Basin to the Port of Gladstone (Source: DTMR)



- more than 250 national parks and other protected areas affected (Source: www.npsr.qld.gov.au)

- 339 State and non-State schools closed during the event (Source: Department of Education, Training and Employment)



- significant damage to crops and livestock, with sugar, citrus, pork and cotton production seriously impacted.



- Operations at a number of coal mines, alumina refineries and ports disrupted from rain, flooding and rail link closures.

* based on Phase 1 rapid damage assessments at 7 February 2013.

3.2.2 Recovery and reconstruction

The Recovery Plan has been prepared to set the framework for the recovery from Tropical Cyclone Oswald with the aim of getting affected communities back on their feet as quickly as possible while ensuring the effective and efficient employment of limited resources. An overview of the Recovery Plan is set out in **Section 3.4**.

Significant progress has been made to date in the recovery response to the damage caused by Tropical Cyclone Oswald, including:

- 98% of the State-controlled roads affected or closed are now open with conditions
- 95% of the affected State rail network has now been recovered
- the completion of repairs to Don Tallon bridge, a crucial link for the Bundaberg community —refer **Section 3.2.3**
- the repair and re-opening of the Capricorn Highway at Neerkol Creek within two weeks of the disaster
- all seven affected maritime ports have reopened, of which five are open with restrictions and two without
- the recovery of 60 of the 261 navigation aids that were damaged
- major repairs to boating infrastructure including jetty repairs at Picnic Bay on Magnetic Island which are well underway
- 47 national parks and protected areas being fully re-opened in less than a week after the weather system had passed, with another 64 partly re-opened (Source: www.npsr.qld.gov.au).
- 1,445 payments totalling \$4.6 million provided from the 2013 Queensland Floods Appeal for emergency assistance (Queensland Floods Appeal 2013 at 6 March 2013)
- \$3.2 million in (Category C) funding has been acquitted for individuals, small business, primary producers, charities and non-profit organisations. (Source: *the Authority* at 7 March 2013).

(Source: DTMR at 6 March 2013 except where noted)

The cost of reconstruction is expected to be significant.

Preliminary estimates of the cost of reconstruction and the impact of Tropical Cyclone Oswald on the Authority's existing program of works are currently under assessment.



Above: Damage to Capricorn Highway at Neerkol Creek (Courtesy www.themorningbulletin.com.au).



Above: Rangers remove massive trees from Freshwater Road, Cooloola, Great Sandy National Park. (Courtesy www.npsr.qld.gov.au).



Above: Flooded Kent Street in Maryborough CBD 28/1/13 (Courtesy www.frasercoastchronicle.com.au).



Above: The Burnett River hit Bundaberg at 70kmh, devastating all in its path, leaving this fishing trawler high and dry. (Courtesy www.frasercoastchronicle.com.au).

3.2.3 Tropical Cyclone Oswald—Recovery case example

Don Tallon Bridge repairs complete - Bundaberg

Location: Located in the Bundaberg/North Burnett recovery region, Don Tallon Bridge was seriously affected by flooding from Tropical Cyclone Oswald.

Don Tallon Bridge runs through the Bundaberg CBD and is a crucial link for the Bundaberg community.

Details: One of Bundaberg's main bridges is now safe and accessible after emergent works were undertaken to repair the northern approach to the bridge following severe damage from the floods associated with Tropical Cyclone Oswald.

Australian Defence Force had installed temporary steel spans across the damaged section as an interim measure until the bridge could be repaired. This provided a temporary measure to ease congestion while engineers worked to complete the repairs underneath.

The Department of Transport and Main Roads (TMR) advised that the approach was reconstructed within three weeks of the flooding event.

Final surfacing and minor work to tidy the area will be completed when resource demand eases in the region.

The bridge re-opened with some traffic restrictions from 13 February 2013.



Above: Damage to Don Tallon as a result of floods associated with Tropical Cyclone Oswald. (Courtesy: www.news-mail.com)



Above: Severely damaged Don Tallon Bridge in Bundaberg following the floods



Above: Don Tallon Bridge after the completion of emergent works

3.3 Queensland 2013 Flood Recovery Plan

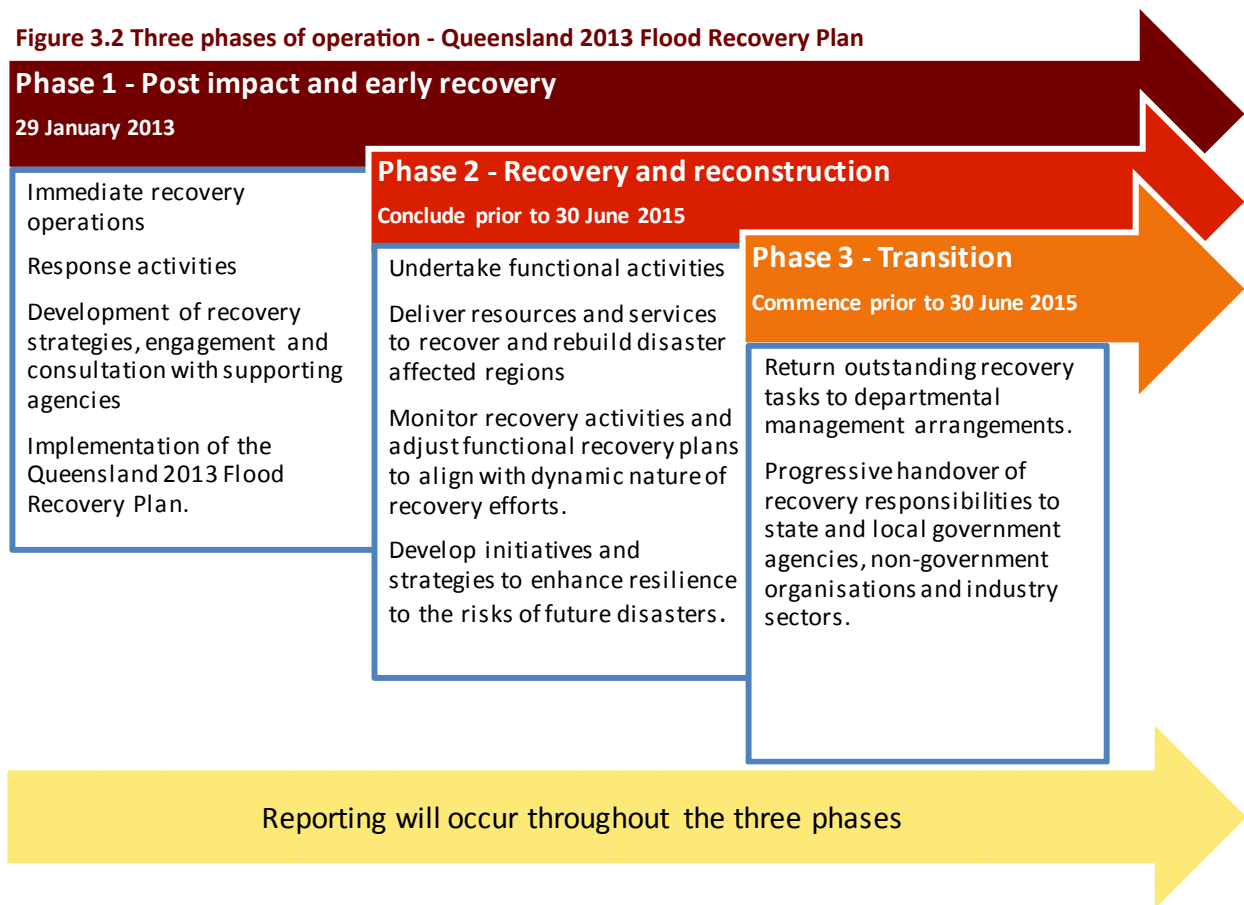
The Recovery Plan has been prepared to set the framework for the recovery from the flood and damage impacts of Tropical Cyclone Oswald. The aim of the plan is to assist affected communities to get back on their feet as quickly as possible while ensuring the effective and efficient employment of limited resources.

The Recovery Plan establishes the context for recovery at the State and local levels of government through setting the governance framework and providing strategic guidance for the coordination and management of recovery, reconstruction and community resilience activities of those areas impacted by Tropical Cyclone Oswald.

The Recovery Plan also sets the context for improved enhancement of resilience and aims to improve the State's ability to withstand, and bounce back from, future natural disaster events.

The plan coordinates the prioritisation and alignment of resources from multiple sources to support the broad range of recovery activities. These activities will be undertaken across three phases as set out in **Fig. 3.2**.

Figure 3.2 Three phases of operation - Queensland 2013 Flood Recovery Plan



The Recovery Plan also establishes the structure for recovery activities from Tropical Cyclone Oswald.

Disaster Recovery Coordinators have been appointed to coordinate disaster recovery efforts in three regions that were created in response to the devastation brought by the event:

- Northern Queensland Region— Don Cousins
- Bundaberg/North Burnett Region—Deputy Commissioner Brett Pointing APM
- Southern Queensland Region— Bill Mellor.

The composition of the three regions is set out in **Appendix C**.

Functional recovery groups, led by relevant State agencies, have also been established to effectively manage and coordinate recovery initiatives across impacted regions. The roles and responsibilities of each functional recovery group, together with the key performance metrics that will be used to measure the rate of recovery progress, are set out in the Recovery Plan and summarised in **Section 3.4** below.

The Authority will provide support to the Disaster Recovery Coordinators and report on progress of the functional recovery groups against their key tasks.

3.4 Functional Recovery Groups

The Recovery Plan documents the State's recovery governance framework and provides a broad overview of each functional recovery group's roles and responsibilities. The key performance metrics that will be used to measure the rate of recovery progress for each functional recovery group are documented in the Recovery Plan and are summarised below. The status of progress of each functional recovery group against their key metrics will be reported on in future reports as data becomes available.

3.4.1 Human and social

The Human and Social functional recovery group coordinates the efficient and effective delivery of human and social recovery activities. These activities include the provision of financial assistance and personal support services for individuals, families and communities.

Key metrics (& measures):	
1. All Essential Household Contents Grant (EHCG) applications assessed and paid when eligible	<ul style="list-style-type: none"> Number of grant applications Number of applications assessed Number of grant applications paid
2. All Structural Assistance Grant (SAG) applications assessed	<ul style="list-style-type: none"> Number of grant applications Number of applications assessed
3. All Essential Services Safety and Reconnection Scheme Grant (ESSRSG) applications paid when eligible	<ul style="list-style-type: none"> Number of grant applications Number of grants paid
4. Communities are supported by additional 'counselling, other' services	<ul style="list-style-type: none"> Number of new clients receiving support from NDRRA funded services Number of hours of service provision by NDRRA funded services
5. Communities are supported by additional 'financial advice, information and referral' services	<ul style="list-style-type: none"> Number of new clients receiving support from NDRRA funded services Number of hours of service provision by NDRRA funded services
6. All displaced households seeking housing assistance are assessed for housing need and referred to appropriate housing services.	<ul style="list-style-type: none"> Number of displaced households seeking housing assistance Number provided with a bond loan and/ or rental grant to facilitate access to the private rental market Number of households assisted into temporary/transitional accommodation Number allocated social housing or allocation is being processed

3.4.2 Economic

The Economic recovery group coordinates the efficient and effective planning and implementation of economic recovery activities. These activities include advice on the economic impacts of current disaster events and the group also provides information on the needs of local government and industry in responding to the events and getting the economy back to full production.

Key metrics (& measures):	
1. Coal exports	<ul style="list-style-type: none"> Coal export tonnage
2. NDRRA Financial assistance	<ul style="list-style-type: none"> Categories and amount of funding approved

3.4.3 Environment

The Environment recovery group coordinates the efficient and effective planning and implementation of environment recovery activities. These activities include advice on the measures required to achieve environmental recovery and to monitor and provide advice on current and potential environmental and cultural heritage issues. It also facilitates information exchange and maximises efficient allocation of resources towards recovery. A key focus is to progress strategies to reduce future impacts on the natural environment, in both urban and rural landscapes, focussing on long term resilience and sustainability.

Key metrics (& measures):	
1. National parks	<ul style="list-style-type: none"> National parks affected by event re-opened for conservation management
2. Sewerage treatment and water supply	<ul style="list-style-type: none"> Sewage treatment plants and water treatment plants affected by event return to compliance with their relevant environmental authorities
3. Mining operations	<ul style="list-style-type: none"> Mining operations affected by event return to compliance with their relevant environmental authorities.

3.4.4 Building

The Building recovery group coordinates the efficient and effective information exchange, issues identification and resolution between government agencies, building industry and insurance providers to ensure the efficient and prioritised use of available resources.

Key metrics (& measures):	
1. Provision of immediate and longer term temporary accommodation	<ul style="list-style-type: none"> • Timely procurement of adequate numbers of accommodation units • Number of displaced households seeking housing assistance • Number of households assisted into temporary accommodation.
2. Provision of assistance and advice to building client agencies to support the repair and restoration of State public building	<ul style="list-style-type: none"> • Number of significantly affected State public buildings and extent of damage • Number of significantly affected State public buildings repaired/restored to service
3. Provision of building advice and information to support the community in its recovery	<ul style="list-style-type: none"> • Building Services Authority (BSA) website updated with factsheets relevant to natural disaster recovery. • Regular status updates by Industry Association to Building Recovery Group (BRG) Sub Committee
4. Provision of advice to the recovery supply chain including contractors, subcontractors and material suppliers	<ul style="list-style-type: none"> • Regular status updates by Industry Associations to BRG Sub Committee
5. Participation in future planning forums and discussion panels	<ul style="list-style-type: none"> • Regular status updates by Industry Association to BRG Sub Committee

3.4.5 Roads and Transport

The Roads and Transport recovery group coordinates the efficient and effective delivery of road and transport recovery activities. These activities include input to the development of the Roads and Transport Recovery Program, including identifying priorities. TMR is responsible for delivering the state-controlled roads and transport response and reconstruction and will engage directly with industry and the community on the recovery and reconstruction phases following the natural disaster.

Key metrics (& measures):	
1. Damaged State-controlled roads to be reconstructed (kms)	<ul style="list-style-type: none"> • Total length of damaged roads (kms & %) • Total length of damaged roads under reconstruction (kms) • Total length of damaged roads reconstructed (kms)
1. Impacted/damaged rail line	<ul style="list-style-type: none"> • Total length of impacted/damaged rail lines (kms & %) • Total length of impacted/damaged rail line recovered (kms)

Section four:
Program Status



4.0 Program Status

4.1 Recent developments

The *Queensland Reconstruction Authority Amendment Bill 2013* was introduced into the Legislative Assembly on 13 February 2013 to expand the jurisdiction of the Authority to include Tropical Cyclone Oswald and other events which have occurred in the current disaster event period (2012-13), provide the Authority with a stronger focus on community resilience and extend the term of the Authority until 30 June 2015.

Since the last report, there has been one additional disaster event activation declared for NDRRA financial assistance. On 7 March, the Minister for Police and Community Safety approved the activation NDRRA assistance for “*Communities within the defined areas of Central and Southern Queensland affected by the low and trough between 25 February to 3 March 2013*”.

4.2 Looking forward

The focus of the Authority for the program of works existing prior to Tropical Cyclone Oswald has shifted from the management of applications to program delivery with ongoing monitoring of progress and the countdown to completion of the reconstruction program of works, highlighting high performing areas and success stories.

Following Tropical Cyclone Oswald, the Authority will support the State’s response to reconstruction with a focus on streamlining the submission and application approval process and ensuring project delivery to complete the associated reconstruction work with an emphasis on improving the resilience of communities for potential disaster events.

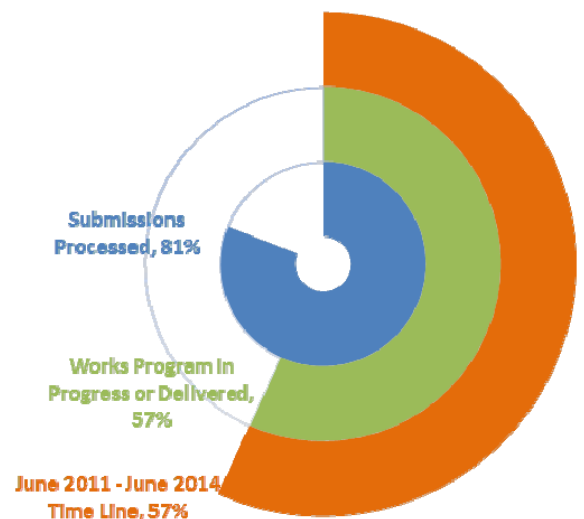
4.3 Combined program progress

At 1 March 2013, the combined program for all events which are managed by the Authority has progressed as follows:

- a cumulative value of \$12.8 billion in submissions have been received, representing an increase of \$0.3 billion since last month
- a cumulative total of \$9.8 billion has been processed (81% of total program) representing an increase of \$0.4 billion since last month
- a cumulative value of \$6.9 billion of the works program in progress or delivered, representing an increase of \$0.1 billion since last month
- funding acquitted for individuals, small business, primary producers and charities and non-profit organisations amounts to \$413.1 million.

The impact of Tropical Cyclone Oswald and other 2012-13 events on the Authority’s program of works is currently under assessment.

Figure 4.3.1 Combined Program Progress



* The figure above does not reflect the Authority’s extension to 30 June 2015 or the program of works for 2012-13 events, which is currently under assessment.

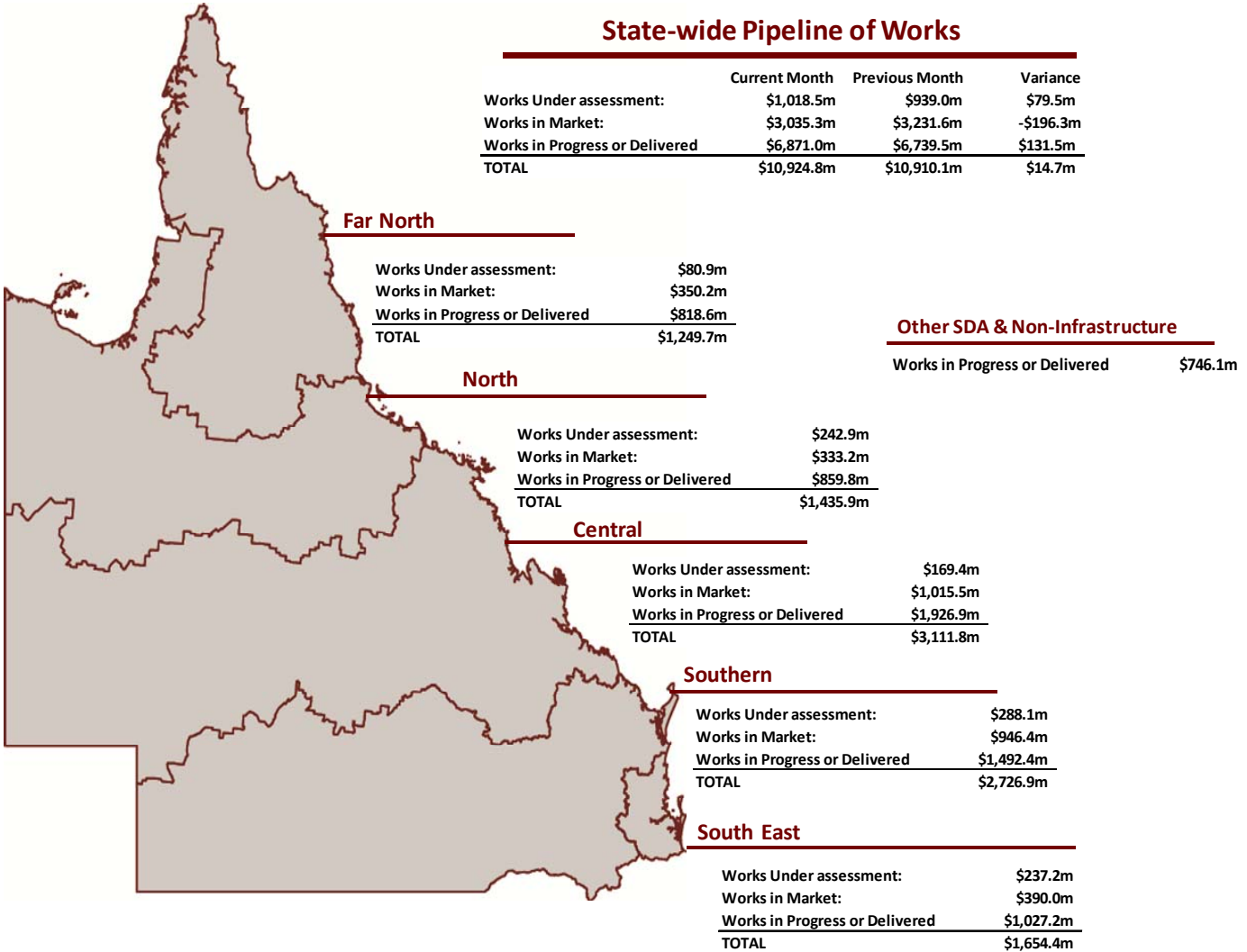
Source: the Authority as at 1 March 2013

4.4 State-wide pipeline of works

The Pipeline of works includes all events actively managed by the Authority (2009 to 2012) with an estimated program value of \$12.2 billion. This pipeline does not currently reflect the impact of Tropical Cyclone Oswald and other 2012-13 events on the Authority's program of works. These impacts are currently under assessment.

The State-wide reconciliation indicates that:

- \$1.0 billion of works is in 'Works under Assessment';
- \$3.0 billion of works is in 'Works in Market'; and
- \$6.8 billion of works is in 'Works in Progress or Delivered'.



1. The pipeline now represents all open 2009-2012 events with a cumulative value of \$12.2 billion.
2. Additional works may have been conducted but are yet to be reported to the Authority
3. *Other SDA and non-infrastructure* encompasses SDAs other than DTMR and non-infrastructure NDRRA grants received by the Authority.

Source: DTMR at 31 January 2013; Authority at 1 March 2013

Pipeline of Works Definitions

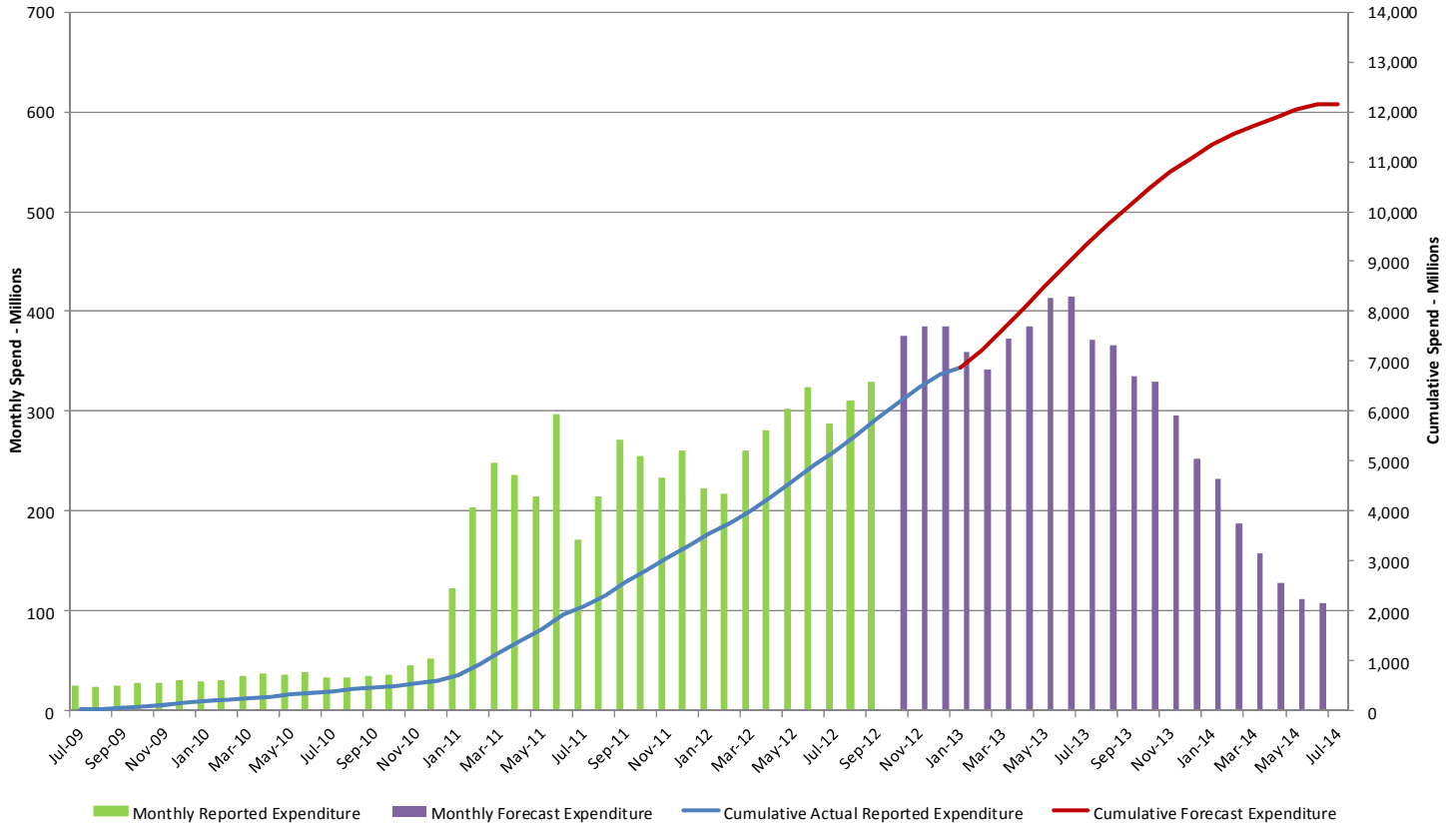
Stage	Description
Works under Assessment	Applications for packages which are currently under assessment by the Authority or are awaiting additional information from the applicant.
Works In Market	Applications for packages which have been approved by the Authority and are in the tender or contract process.
Works in Progress or Delivered	Expenditure on packages in progress or delivered.

4.5 Program of works expenditure

Combined program of works expenditure (updated quarterly)


The figure below represents the monthly expenditure and estimated costs for all events managed by the Authority (excluding 2012-2013 events which are currently under assessment).

Figure 4.5.1 Combined Program of Works



Source: the Authority - September 2012 Quarterly Review & 1 March 2013

4.6 Iconic projects* in reconstructing Queensland

Project	Value (\$m)	Description	Status
Cardwell foreshore (Cat D & Cat B) FNQ	\$36	<p>The Cardwell foreshore is an important infrastructure project in North Queensland that combines a range of projects intended to restore social, economic, transport and tourist infrastructure in a community that was severely impacted by Tropical Cyclone Yasi.</p> <p>Funding for the project is being provided as restoration of essential public assets (REPA - Category B) and through special (Category D) funding under NDRRA arrangements. Works at Cardwell will include: the construction of protection for the road; foreshore; recreation; picnic; memorial; pedestrian facilities; a roundabout and formal parking.</p> <p>Works to the Coral Sea Memorial and northern playground include dunal revegetation, landscaping installation and concrete pads to seating areas. Paths will also be constructed around the jetty playground and plaza.</p> <p>See Civil Pty Ltd has been awarded the contract for the Reconstructing Cardwell project.</p> <p>A number of community information sessions have been held and a shop front has been in place since August 2012 for access to information about the project.</p> <p>As a result of the extreme weather caused by ex-Tropical Cyclone Oswald, the temporary stormwater drainage works gave way under pressure of intense rain and wave action. Contractors have since reinstated the damaged stormwater drainage and are continuing with construction.</p>	<p>Construction commenced in August 2012 and completion is expected in the latter half of 2013, subject to weather.</p> <p>Revegetation of the foreshore has commenced. Native plants endemic to the Cardwell area will protect the foreshore as they grow and take hold. Works are also continuing on the Coral Sea Memorial and northern parkland and the jetty playground and plaza.</p> <p>Delivery of the project was not significantly impacted by damage caused by Tropical Cyclone Oswald.</p>
<div style="display: flex; justify-content: space-around;"> <div style="text-align: center;">  <p><i>Above: pathway construction on Cardwell foreshore.</i></p> </div> <div style="text-align: center;">  <p><i>Above: pavement reconstruction</i></p> </div> <div style="text-align: center;">  <p><i>Above: commencement of rock wall construction - Cardwell foreshore.</i></p> </div> <div style="text-align: center;">  <p><i>Above: road works on Cardwell foreshore.</i></p> </div> </div>			
Stokes Bridge, Kents Lagoon Scenic Rim SEQ	\$1.6	<p>Stokes Bridge crosses Warrill Creek on Kengoon Road, Silverdale. Located approximately 78km south-west of Brisbane, the bridge provides direct access to Cunningham Highway for the residents and businesses of Munbilla, Obum Obum and surrounding communities. It is an older timber bridge, believed to have been built in the 1950s. It represents many similar bridges throughout the State that were damaged in the flood event leaving them in unstable and unsafe conditions.</p> <p>Stokes Bridge suffered severe damage to its timber piers and significant soil erosion at its abutments, resulting in an embankment being undermined and collapsing.</p> <p>The crossing is closed while being replaced with a new concrete bridge - a single span structure to better withstand the impact of water and debris washing downstream in future floods.</p>	<p>Work commenced in late October 2012. Piles at both abutments have been constructed and headwall construction is currently underway and on track. Two pre-cast concrete spans, each weighing more than 86 tonnes, were shifted into place on 22 February 2013 using two heavy left cranes.</p> <p>Despite floodwaters consuming the site of the new Stokes Bridge, the project was not seriously affected by the impact of ex-Tropical Cyclone Oswald.</p> <p>Works are expected to be completed by early April, weather permitting.</p> <p><i>(update courtesy: 25/2/13 media release www.scenicrim.qld.gov.au)</i></p>

Right: concrete span being shifted into place



* Iconic projects represent projects that may be complex or of great significance to the local community.

4.6 Iconic projects in reconstructing Queensland (continued)

Project	Value (\$m)	Description	Status
Callandoon Road, Goondiwindi	\$7.3	<p>Callandoon Road crossing is critical for access from properties on the flood plain of the Macintyre River and is an important access route for cotton and wheat crops to access the cotton gin and wheat depot in Goondiwindi.</p> <p>Callandoon Road, including a major culvert crossing of Callandoon Creek about 20km west of Goondiwindi, was damaged as a result of the Western Queensland flooding event.</p> <p>Restoration includes major pavement and bitumen repairs including dig outs, insitu stabilisation and shoulder repairs throughout a large majority of the road.</p> <p>Works began in September 2011. The road was again affected by flooding of the Macintyre River in Nov/Dec 2011. Work resumed in Feb 2012, although additional rain delayed work once again.</p>	<p>Council plans to complete works in advance of the cotton season harvest, starting in April 2013.</p> <p>Much of Callandoon Road was inundated during the 2013 flood event and water remains in some floodways and drains. The road has reopened after debris was cleared, revealing minor damage to some pavements near the end of the road. No other major damage is evident at this stage.</p>



Above: damage and inspection of damage of Callandoon Road.



Images above showing damage and repair to the culvert on Callandoon Road.

Diamantina Development Road, Boulia to Dajarra, Central Queensland	\$5.4	<p>Diamantina Developmental Road is located between Boulia to Dajarra - (80 kms of road), Central Queensland. Several sections of the road were damaged as a result of monsoonal conditions and torrential rain from natural disaster events, resulting in a high water table over the area for an extended period.</p> <p>Works to sections of the road including removal of surface debris, shoulder resheet/edge repair, repair/replace concrete batter drainage protection were completed in late December 2012 (as shown in the photos below).</p>	<p>Further works on the road are scheduled to commence by April 2013 and are estimated to be completed by December 2013.</p> <p>Works are progressing well on this road. The dry weather in the west has enabled works to continue uninterrupted.</p>
---	-------	---	---

Below: Completed works of part of Boulia to Dajarra section of Diamantina Development Road.



Right : new concrete batter on a section of the road



Left: completed culvert and concrete apron on another section of the road.

4.6 Iconic projects in reconstructing Queensland (continued)

Project	Value (\$m)	Description	Status
Palm Island seawall	\$12.3	<p>The Palm Island foreshore provides the focal point for the island's community. It is the location of culturally significant landmarks and memorials as well as the island's community facilities. The seawall in Challenger Bay provides wave dissipation and erosion mitigation.</p> <p>Damage to the seawall occurred as a result of Cyclone Yasi.</p> <p>In early 2012, Palm Island Aboriginal Shire Council held discussions with the Authority on an application being prepared for submission. This value engineering process resulted in a decreased submission value from an initial estimate of over \$20 million to a \$12.3 million application for restoration of several segments of the Island's protective seawall which had been damaged during Tropical Cyclone Yasi.</p>	<p>Council has started the revised program of works.</p> <p>UDC Consulting Engineers were recently appointed and are currently preparing the design for the project.</p> <p>Estimated completion is early 2014.</p> <p>The project was not affected by ex-Tropical Cyclone Oswald.</p>
BCC RiverWalk (Cat D)	\$70.0	<p>The Brisbane RiverWalk was a unique pedestrian and bicycle path which linked the city's CBD with the inner suburb of New Farm. It also provided a direct link with tertiary education, entertainment, recreation, commercial, community and residential precincts in the inner city. The floating infrastructure was destroyed by the January 2011 floods and the whole structure was subsequently removed.</p> <p>The Brisbane City Council conducted detailed public consultation and consequently decided to replace the previously floating walkway with a fixed structure with enhanced flood resilience. The detailed design was completed on 11 December 2012.</p>	<p>The construction tenderers have been shortlisted to five and the tender is due to be awarded in May 2013.</p> <p>The anticipated completion date is late 2014.</p>
Clump Point and Dunk Island Jetties (Cat D)	\$5.5	<p>Mission Beach and Dunk Island are tropical tourist destinations located between Cairns and Townsville. Ferries normally ran daily between the Clump Point Jetty at Mission Beach and the Dunk Island Jetty.</p> <p>The two jetties are crucial for reviving the area's struggling tourism industry and for providing the departure point to local resort islands and the Barrier Reef. Both jetties were severely damaged as a result of Cyclone Yasi in February 2011.</p> <p>\$5.5 million was provided for the restoration of the jetties as part of a \$15 million NDRRA exceptional circumstances package for the Cassowary Coast region.</p> <p>Dunk Island jetty will be repaired and the deck rebuilt, with a new extension to reconnect it to a more stable location. The new jetty at Clump Point will be built just south of the existing structure and will be 170m long, 5m wide to accommodate vehicular and pedestrian traffic.</p>	<p>The reconstruction of the Clump Point and Dunk Island jetties has begun.</p> <p>Pile-driving work on Dunk Island jetty has now finished. The equipment will now be moved by barge to Clump Point. Work will begin on the new Clump Island jetty mid March and is expected to be completed by July 2013, weather permitting</p> <p>No material impact occurred to this project as a result of ex-Tropical Cyclone Oswald.</p>



Above: damaged Clump Point jetty (left) and Dunk Island jetty (right) following Tropical Cyclone Yasi, February 2011.
(Courtesy: Townsville Bulletin, 6/3/13 and www.cassowarycoast.qld.gov.au)



Above: Pile-driving works for the new jetty underway on Dunk Island.

4.6 Iconic projects in reconstructing Queensland (continued)

Project	Value (\$m)	Description	Status
Mt Sylvania Road, Upper Tenthill, Gatton	\$10.0	<p>Several locations on Mt Sylvania Road were significantly damaged due to extreme flooding in 2010 and 2011, including eight creek crossings (7 floodways and 1 bridge). Reconstruction of the first creek crossing began in November 2011.</p> <p>The works included the replacement of temporary pipe culverts installed as an emergency measure immediately after the disaster. Hydraulic modelling was carried out to gain an understanding of the impact of flows on the crossings along Mt Sylvania Road.</p> <p>Mt Sylvania Road is a key piece of infrastructure for stakeholders in the area and it is important to minimise access restriction issues for the local community whilst essential flood reconstruction works are carried out. This has been achieved through the installation of temporary crossings prior to commencing reconstruction works.</p> <p>In addition to the floodway repairs, reconstruction works on Mt Sylvania Road also included the reinstatement of sections of flood damaged pavement.</p> <p>Works in 2013 will include additional pavement works and the final three floodways.</p>	<p>Mt Sylvania was significantly impacted by ex-Tropical Cyclone Oswald which severely damaged approximately 3km of road and a number of low level creek crossings between Mt Sylvania School and Junction View.</p> <p>Tenthill Creek and Hahns Crossing bridge approaches were also badly damaged. Hahns Crossing Bridge was repaired shortly after the flood event and Tenthill Bridge is expected to reopen in early March.</p> <p>Connectivity is being restored in stages starting with 4WD access, followed by truck access and finally 2WD access.</p>



Left: Road works to sections of Mt Sylvania Road following the 2013 event

Peak Downs Highway, Mackay/Whitsunday	\$113.6	<p>TMR is working to reconstruct 59km of disaster-damaged roads on the Peak Downs Highway following the events of 2010-11.</p> <p>The Peak Downs Highway is a Priority 1 road in Queensland and the second most important road in the region after the Bruce Highway, carrying heavy traffic to the Bowen Basin Coal fields.</p> <p>Between January and May 2011, urgent repairs were undertaken to return the road network to pre-flooding operational conditions.</p> <p>Construction activities include road stabilisation, shoulder widening, and bitumen re-surfacing.</p>	<p>Construction works commenced in 2011 and are expected to be complete by mid 2013.</p> <p>Reconstruction works have been completed by RoadTek and Golding/OHL Joint Venture.</p>
--	---------	---	--



Peak Downs Highway – showing damage as a result of the 2010-11 events.



Above: Primer sealing on a section of the highway.



Above: Peak Downs Highway – completed section.

4.6 Iconic projects feature

Reconstructing the Bruce Highway, Mackay/Whitsunday Region

Overview: Damage to the Bruce Highway, the key coast link between Brisbane and Cairns, caused by the 2010-11 flood events was severe, particularly between Sarina and north of Bowen. Record rainfall received in the region caused flooding and numerous pavement failures resulting in the highway being closed or under single lane operation and reduced speed limits at various locations for periods of time.

Location: Central Queensland - Mackay/Whitsunday region

As a key freight link to the region's growing mining and agricultural industries, traffic volumes on the highway vary significantly between St Lawrence and north of Bowen.

Details: \$96.7 million

In 2011, following urgent repair works, TMR commenced the massive task of reconstructing almost 50 kilometres of the highway across 32 sites between St Lawrence and Ayr.

The programmed \$96.7 million reconstruction works on the Bruce Highway between St Lawrence and north of Bowen were completed by RoadTek and Shadforth Civil Contractors. Where possible reconstruction works were combined with other TMR projects such as intersection improvements and provision of overtaking lanes to deliver value for money outcomes to the community.

Damaged sections were completed by late 2012.

The Bruce Highway between St Lawrence and north of Bowen was not damaged by ex-Tropical Cyclone Oswald.



Above: Damage to Bruce Highway near Bowen following the 2010/11 wet weather event



Above: Completed section of Bruce Highway.



Above: Completed section of Bruce Highway

Section five:
Progress Reports



5.1 Progress of LGAs and DTMR by region (See Appendix B LGA by region map)

5.1.1 Far North Queensland

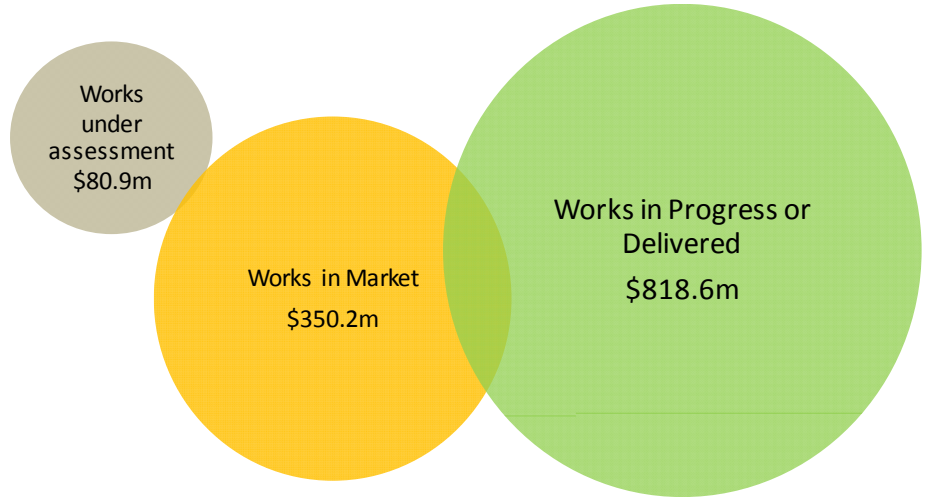


Diagram representing progress - Far North Queensland

Case example: DTMR/Cairns Regional Council

Project:	Gillies Range Road and Gillies Range
Location:	The Gillies Range Road provides road access from Gordonvale south of Cairns to Yungaburra and Atherton on the Atherton Tableland via the Gillies Range. This route is regularly travelled by local residents, self-drive tourists and tour operators accessing Atherton from Cairns on the east coast. The road is famous for its 263 corners, and 800 m elevation change in only 19 kms of road.
Type of works:	The road was significantly damaged and destabilised from the cyclone events of 2010. Torrential rain caused saturation of slope materials which weakened and destabilised the slope structures resulting in batter slippages and rock falls. Slope stabilisation works to repair a number of sites on the Gillies Range have been recently completed. The works included trimming of overhanging material, installing sandbag bunds for drainage, placing erosion control matting, constructing drainage along natural drainage paths to address scouring and rockfall netting and rock bolting to stabilise slopes.
Estimated value:	\$0.7 million
Progress:	Completed.



Above: Gillies Range Road—slope stabilisation works in progress



Above: Slope stabilisation works—a section of the embankment above the road treated with shotcrete.

5.1 Progress of LGAs and DTMR by region

5.1.2 North Queensland

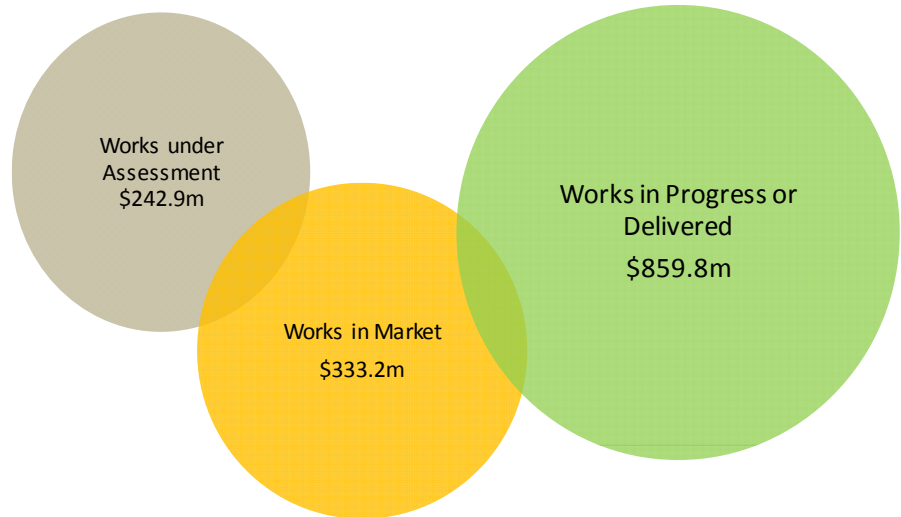


Diagram representing progress - North Queensland

Case example: Burdekin Shire Council

Project:	Groper Creek Road, Home Hill
Location:	Home Hill lies approximately 98 kms south of Townsville and is part of the Burdekin region which includes the neighbouring town of Ayr. Despite its name, Home Hill is on a flat river delta and its underground aquifer provides irrigation for its sugar cane crops. As an established sugar cane town and popular fishing region, Home Hill attracts workers, cane farmers and fishing enthusiasts to the area. Groper Creek Road, an important rural arterial road in Home Hill, was damaged in multiple locations by heavy rainfall and flooding in 2011 and 2012, resulting in pavement failure due to the saturation.
Type of works:	Remove and replace pavement.
Estimated value:	\$2.02 million
Progress:	Bitumen reconstruction works commenced on Groper Creek Road between First Street and Darveniza Road in early January 2013 and completion is expected in late April 2013, weather permitting. These works will be constructed under full road closure with traffic detoured during the construction period. Works on other sections of the road have not started but design is almost complete.



Above: Aerial view of flooded Groper Creek Road showing a damaged section.



Above/below: showing damage to sections of Groper Creek Road after flooding in March 2012.



*Right: Just prior to commencement of works on Groper Creek Road.
(Courtesy: Home Hill Observer, 17/1/13)*



5.1 Progress of LGAs and DTMR by region

5.1.3 Central Queensland

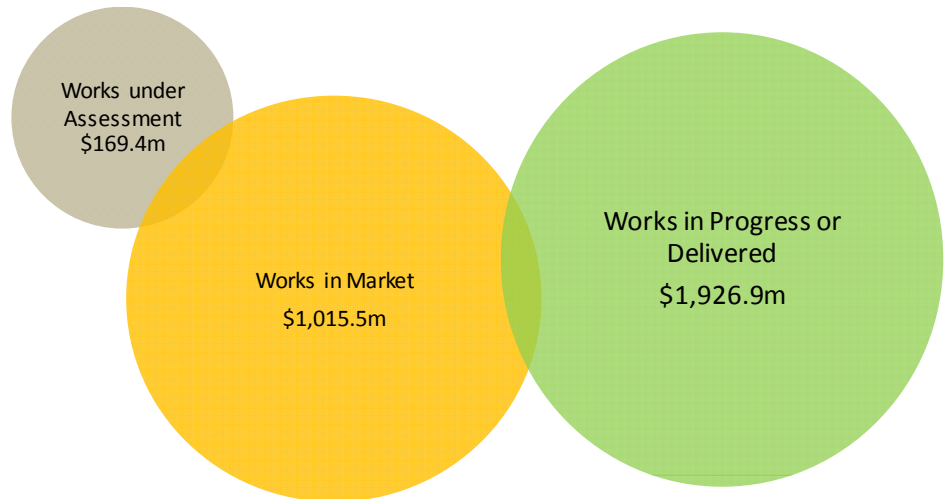


Diagram representing progress - Central Queensland

Case example: DTMR / Barcoo Shire Council

Project:	Barcoo River Bridge, Landsborough Highway
Location:	<p>The Barcoo River Bridge crosses the Barcoo River on the Landsborough Highway, 60 kms northwest of Tambo.</p> <p>The Landsborough Highway is an important freight, livestock and tourist route. The highway is a critical part of the Brisbane to Darwin National Land Transport Network and key to national and regional economic growth and development.</p> <p>An average of more than 450 vehicles use the bridge daily, including 27 towing light vehicles (e.g. caravans) and around 200 heavy vehicles.</p>
Type of works:	<p>The bridge was severely damaged by the 2011 flooding events.</p> <p>Works to restore the bridge included underpinning bridge piers with concrete piles and jacking the bridge deck (up by 42 centimetres to correct damage to the structure) and installing steel shims (spacers) to position the deck at the correct level.</p> <p>The deck surface was replaced and damaged traffic barriers were repaired.</p>
Estimated value:	\$6.2 million
Progress:	Reconstruction works were completed in late September 2012 and the bridge was reopened to traffic on Tuesday 9 October 2012.



Above: Damage to the bridge structure— June 2012



Above: Barcoo River Bridge during reconstruction works—August 2012



Above: Newly completed resurfacing of the Barcoo River Bridge

5.1 Progress of LGAs and DTMR by region

5.1.4 Southern Queensland

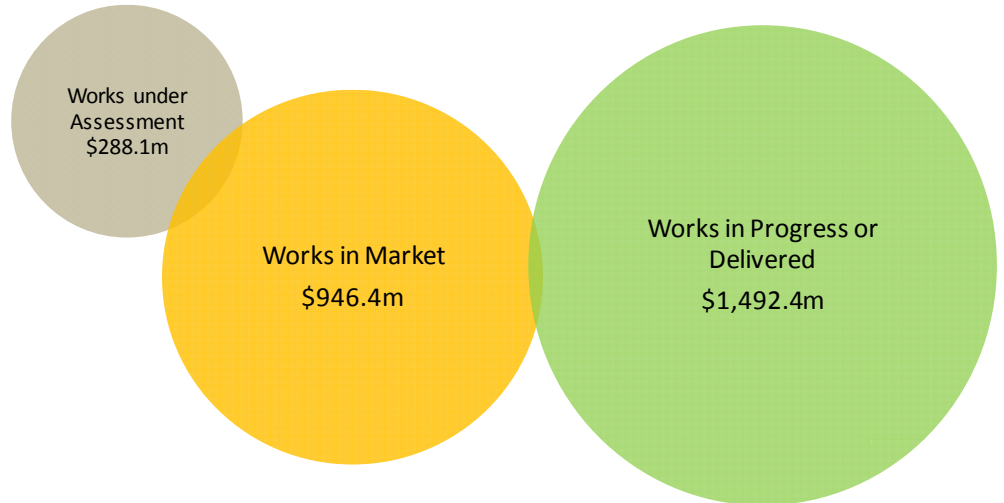


Diagram representing progress - Southern Queensland

Case example: Toowoomba Regional Council

Project:	Djuan Road Bridge
Location:	Located at Djuan, 35 kms north west of Toowoomba and 21km north west of Crows Nest. The timber bridge, which spans the Gowrie Creek and provides an important community link within the Toowoomba region, was severely damaged by the floods of early 2011. The bridge was subsequently condemned and closed due to safety concerns.
Type of works:	The wooden structure has been removed and is being replaced by a concrete span bridge. The new bridge will span 21 metres long by 10 metres wide. New guardrails will be installed and new surfacing will be laid on the bridge and to the approaches either side. Probuild has been appointed to undertake the reconstruction project.
Estimated value:	\$0.7 million
Progress:	The reconstruction project commenced in November 2012 and the bridge is expected to reopen in April/May 2013, weather permitting. Toowoomba Regional Council has invited the public to offer suggestions of an appropriate name for the new bridge.



Above: Damage to Djuan Road Bridge from 2011 flood events
weather permitting

Public invited to suggest name for new Djuan bridge

Community suggestions are being sought for the naming of the Djuan Road bridge located 21km north of Crows Nest. The bridge is currently undergoing reconstruction under the Toowoomba Regional Council's Natural Disaster Relief and Recovery Arrangements flood recovery program as a result of severe damage caused by the floods of early 2011. The old timber bridge, condemned in early 2012 due to safety concerns, has been removed and is being replaced with a new concrete bridge by contractor Probuild Civil.

The new Djuan Road bridge is expected to reopen in April/May 2013, weather permitting. The public are invited to offer suggestions of an appropriate name for the new bridge. However, the name needs to comply with the council road/bridge naming protocol which includes the following criteria: The name must not cause confusion. The name must be culturally sensitive, being careful not to include words or terms offensive to particular sectors of the community. The name must be unique. The bridge or road should not be named after a living person.

The protocol suggests that road or bridge names should be relevant to the area and should be named after one of the following: Geographic features such as nearby mountains, rivers or lakes, endemic flora and fauna, items, places or persons of historical significance to the region or the nation, items, places or persons of significance in Indigenous and/or Australian culture, any name of significance to a benefactor. Suggestions of names, along with some background explanation, should be forwarded by email to Jacque.Luck@toowoombalrc.qld.gov.au.



Djuan bridge - A new bridge due to open April-May

Right: Media article ahead of bridge reopening.
(Courtesy: High Country News, 5/2/13)

5.1 Progress of LGAs and DTMR by region

5.1.5 South East Queensland

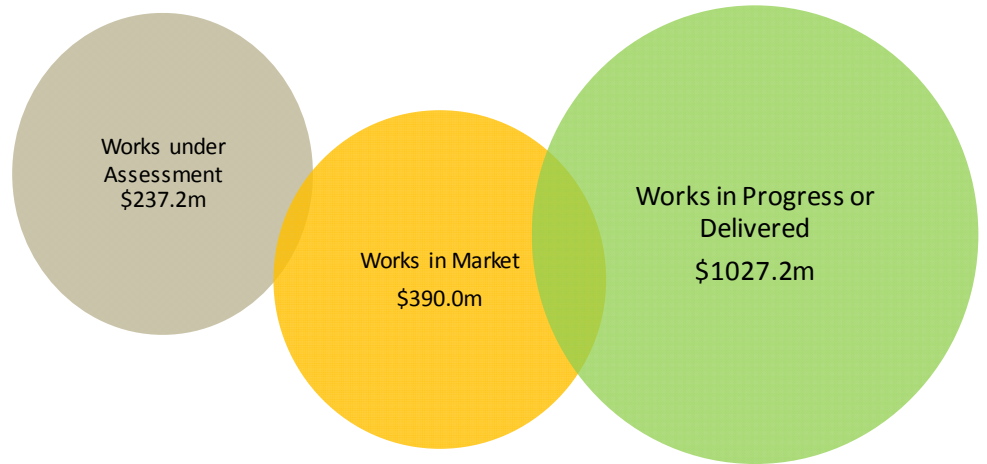
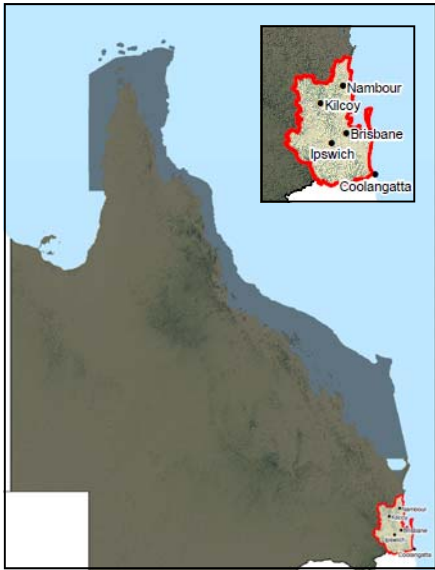


Diagram representing progress - South East Queensland

Case example: Redland City Council

Project:	Main Road Causeway, Wellington Point
Location:	Wellington Point is a suburb of Redland City, about 22 km south-east of Brisbane. The point and its adjoining waters are used extensively for aquatic sports and the area is also a popular day-trip destination. As a result of the flood event in February 2011, Main Road at the causeway collapsed and created a sheer drop, hindering access to Wellington Point.
Type of works:	Reconstruction of the road and supporting batter for the length of the failed embankment and restore southbound lane and shoulder of the carriageway. Works included the removal of the failed area and associated vegetation clearing, construction of a retaining wall at the toe of the batter, installation of rock fill up to subgrade level, construction of a gravel pavement and installation of an asphalt seal. Associated works such as the removal and reinstallation of the existing guard rail and fencing along with replacement of damaged sections also formed part of this project.
Estimated value:	\$1.06 million
Progress:	Completed in August 2011.



Above: Showing damage, progress of works and completed works – reconstructed /stabilised embankment and guard rails at the causeway, Main Road, Wellington Point.



Above: Showing damage, progress of works and completed works – rock filled embankment batter at the causeway, Main Road, Wellington Point.

5.2 Progress of State-controlled roads and highways

The current state of activity:

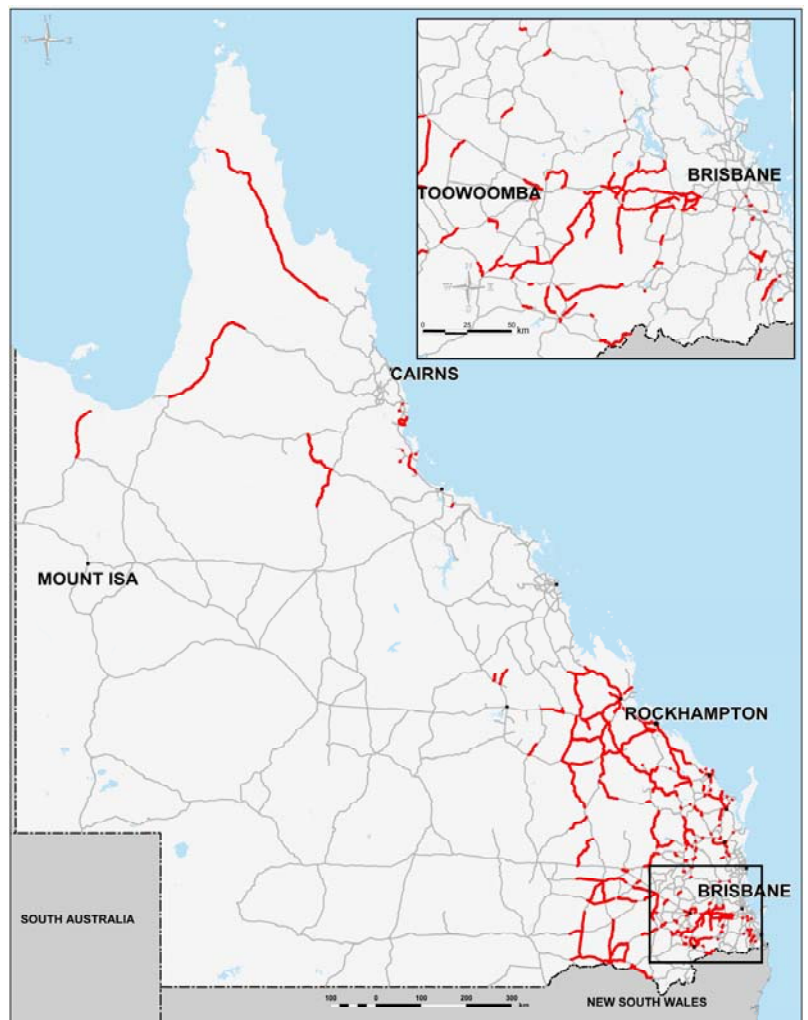
- Roads – the cumulative spend by the Transport Network Reconstruction Program (TNRP) to 31 January 2013 is \$3.23 billion and consists of \$549 million on recovery works and \$2.681 billion on reconstruction works.

Recovery works from recent events are in progress. Since Tropical Cyclone Oswald and Associated Rainfall and Flooding natural disaster event was declared, at least 5,845km (17.5%) of the State's 33,383kms of state-controlled roads have been closed or had limited access (see **Figure 5.2.1** below).
- Rail – 3,100km (43%) of Queensland Rail lines were closed due to the Tropical Cyclone Oswald event, of which 95% were recovered by 4 March 2013.
- Maritime - major repairs required to boating infrastructure include jetty repairs at Picnic Bay on Magnetic Island are well underway. Tropical Cyclone Oswald and associated rainfall and flooding affected 7 ports, damaged 261 aids to navigation, of which 60 were recovered, and 27 temporarily fixed by 4 March 2013.

Key achievements:

- Recovery works in relation to Tropical Cyclone Oswald are progressing with key achievements including repairs to and reopening of Bundaberg's Don Tallon Bridge and the Capricorn Highway at Neerkol Creek within two weeks of the disaster. Cost estimates of damage across the transport network are currently being finalised.
- January 2013 expenditure was \$89 million. It is anticipated the momentum in expenditure will slow in the short term as a result of the wet season and the recent natural disaster events where contractors have been diverted to recovery works.
- At 31 January 2013, contracts valued at \$277 million were being prepared to go to market in the next four weeks while contracts valued at \$388 million were being assessed and nearing contract award.
- Since the commencement of the TNRP, 449 contracts worth over \$4.243 billion have been awarded.
- During January 2013, construction was completed on 177km of road – well above the planned 128km. However, the impact of Tropical Cyclone Oswald will delay TNRP works in some regions, particularly in the Wide Bay/Burnett.
- Construction commenced on 33 projects valued at \$109 million in January 2013 including four packages of work with a combined value of \$9 million by the Barcaldine, Blackall-Tambo and Longreach Regional Councils.
- In works being undertaken in the Fitzroy region, impacts on the cycads listed in the *Environmental Protection and Biodiversity Act* have been significantly reduced due to a redesign, resulting in no referral being required for the removal of the remaining plants. This was a key environmental achievement for the TNRP team during January.

Figure 5.2.1 State-controlled roads closed due to Tropical Cyclone Oswald and associated rainfall and flooding



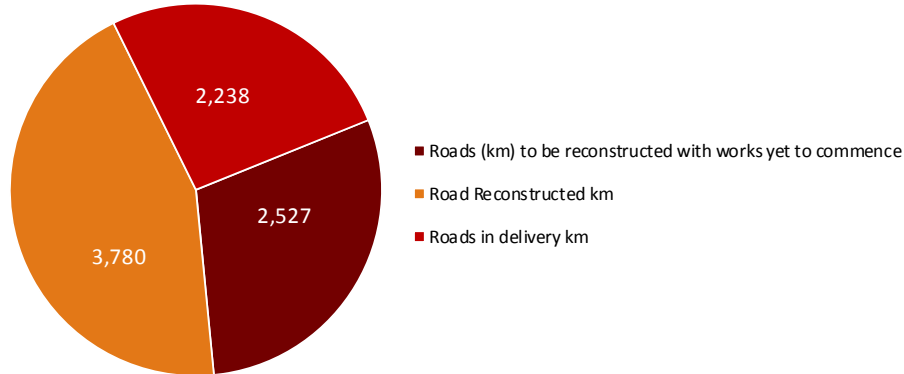
(Source: DTMR 6 March 2013)

5.2 Progress of State-controlled roads and highways (continued)

Reconstruction of damage in 2010-2012

- TMR plans to reconstruct 8,545 km of roads damaged as a result of natural disasters in 2010, 2011 and 2012. Of these roads, 3,780km had been reconstructed representing 44% of the total kilometres to be reconstructed. A further 2,238 km of road is being constructed on active works contracts. **See Figure 5.2.1 and TNRP Summary map.**

Fig.5.2.1 Roads Damaged/Reconstructed following natural disasters in 2010, 2011 & 2012



The status of road recovery and reconstruction contracts at 31 January 2013 is:

- \$2.082 billion of contracts are completed for both recovery and reconstruction works as follows:
 - ° \$550 million of contracts are completed for recovery works;
 - ° \$1,533 million of contracts are completed for reconstruction works;
- \$2,161 million of reconstruction works are currently underway;
- \$388 million in reconstruction works tenders are currently being assessed for approval;
- \$157 million of reconstruction works packages are out to tender; and
- \$277 million of reconstruction works contracts are being prepared to go to market in the next month.

(Note: these values include costs to reconstruct works from damage caused by events in 2010, 2011 and 2012. The costs to reconstruct works from damage caused by Tropical Cyclone Oswald and other 2013 events is currently under assessment.)

(Source: DTMR 31 January 2013)

Morning Bulletin, Rockhampton, 13 February 2013

Back on track

THE Yeppen North Project is getting back on track, after a minor setback due to last month's heavy rainfall.

CQ regional director with Transport and Main Roads, Terry Hill, said: "After the water went down from the flood, there was minimal damage to the works themselves."

"There was less of equipment and materials. The compound and the office area had been flooded, so there's a fair bit of cleaning up to do."

"Work has recommenced, and asphalt will be placed on the Upper Dawson Rd intersection this week."

Mr Hill said the project had only been delayed for one month, due to the rain and flood in January.

The \$85 million project is set to be completed early next year.



FALLING APART: Severe weather and heavy rainfall resulted in this landslide on the Mount Morgan Range last week.

PHOTO: ALLAN REINIKKA
REKINDLING/CSIRO

Morning Bulletin, Rockhampton, 13 February 2013



ARMY TRAFFIC: Roadtek project manager Kirsty Hinchliffe checks the road of the section of the Burnett Highway at Yeppen. She got her equipment when her great-grandfather had a hard time using it.

By LISA BENNETT

KIRSTY Hinchliffe is following in her great-grandfather's footsteps up the Mt Morgan Range.

Kirsty has been appointed RoadTek project manager for the reconstruction of the road that was extensively damaged in last month's heavy rain.

Kirsty grew up in Bouldercombe. And her great-grandfather worked on the original construction of the road (Burnett Hwy).

"Having The Range back in use means a lot to my family and to locals living out here," Kirsty said yesterday.

"There is the Razor-back detour, but it is not the best road for heavy vehicles, it is quite steep in sections and they prefer to go through The Range."

"She said there had been about 35 landslips, where material had either fallen onto the road or there had been extensive cracking of

the surface.

"There is high potential for more material to fall away from the road's edge," Kirsty said.

Terry Hill, the Fitzroy regional director with Transport and Main Roads, said the range had a history of minor landslips.

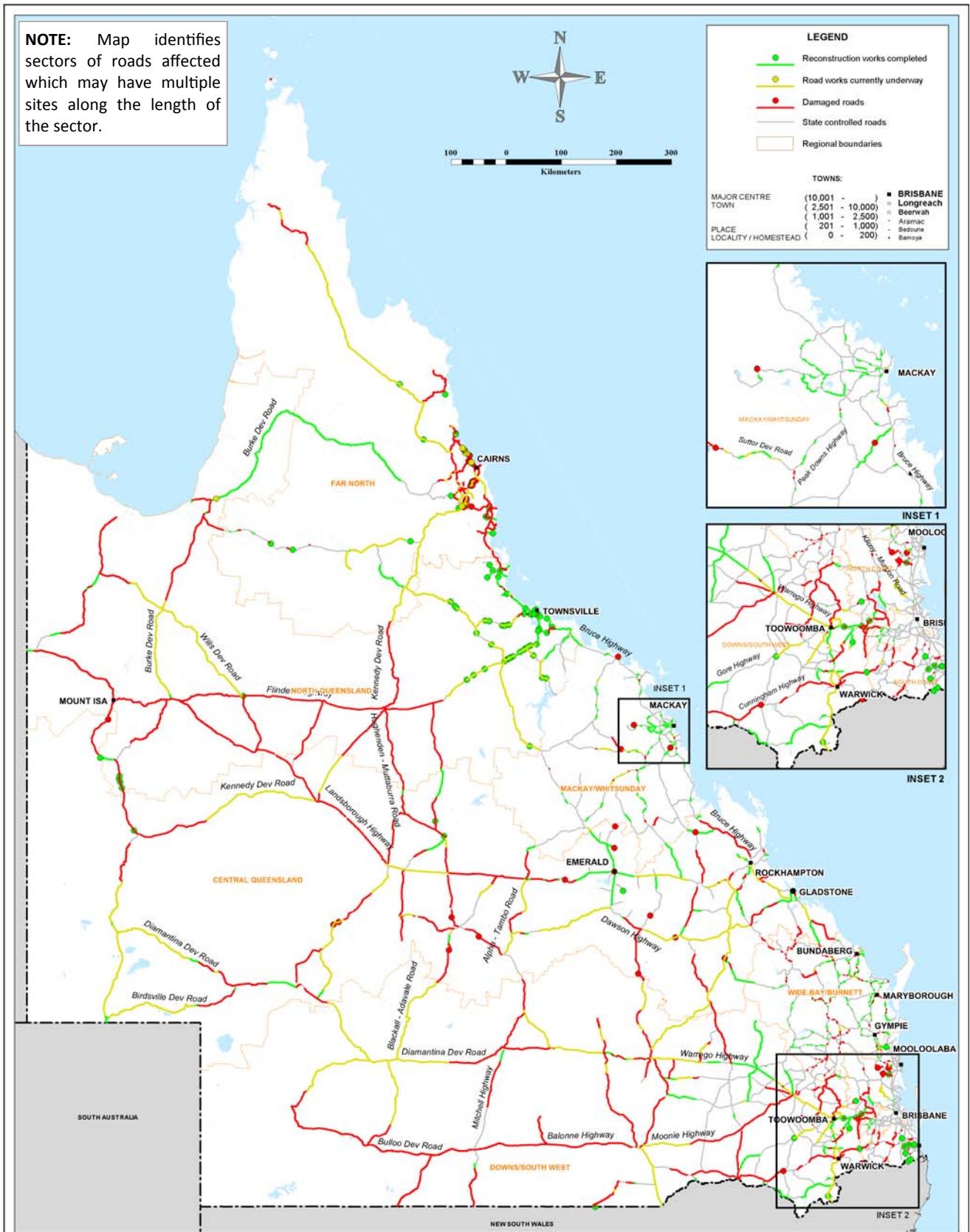
"The heavy rainfall on top of a bushfire about a month ago led to serious damage," Mr Hill said.

"Main Roads are in the process of a technical assessment and design solutions to repair the damage."

"RoadTek are up there and are removing debris and cleaning up in order to investigate the extent of the damage."

"The intention is to reconstruct the range road but it could be a few months before it is back open."

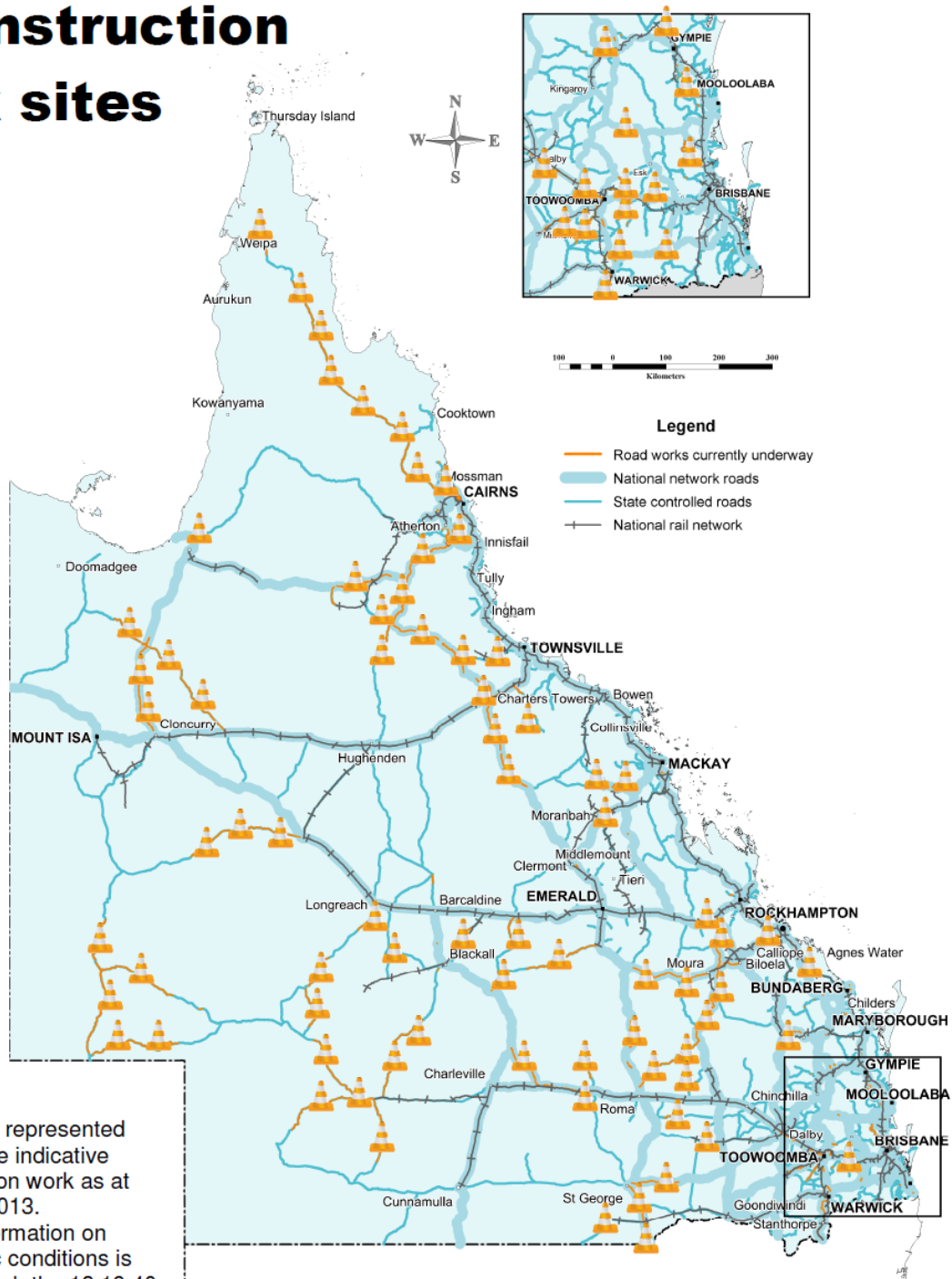
Transport Network Reconstruction Program (TNRP - Summary of Reconstruction Works - January 2013 excluding Tropical Cyclone Oswald)



Branch/Unit : TNRP Mapping Section	QUEENSLAND Transport Network Reconstruction Program (TNRP) Summary of Reconstruction Works January 2013	 Transport and Main Roads
Projection/ Datum : Geocentric Datum of Australia (GDA) 1994, Lat/Long		Plan No/ Job No: _____ Issue: A Date: 12/02/2013 Drawn by: AL Checked by: _____
File location : C:\06 Field Implementation\06-04 GIS\Map Projects\Works Program\20130212\Monique\TNRP_OLD_SummaryofReconstructionWorks.wor		

© The State of Queensland, 2010. © Pitney Bowes Software Pty Ltd, 2010. © QRL Limited, 2010. Based on [Dataset - State Digital Road Network (SDRN)] provided with the permission of Pitney Bowes Software Pty Ltd (Current as at 04/10). [Dataset - Rail, Centre, Line, May 2010] provided with the permission of QRL Limited and other state government datasets. Disclaimer: While every care is taken to ensure the accuracy of this data, Pitney Bowes Software Pty Ltd and/or the State of Queensland and/or QRL Limited makes no representations or warranties about its accuracy, reliability, completeness or suitability for any particular purpose and disclaims all responsibility and all liability (including without limitation, liability in negligence) for all expenses, losses, damages (including indirect or consequential damages) and costs which you might incur as a result of the data being inaccurate or incomplete in any way and for any reason.

Transport and Main Roads reconstruction work sites



The work sites represented on this map are indicative of reconstruction work as at end January 2013. Up to date information on changed traffic conditions is available through the 13 19 40 Traffic and travel Information website.

Updated February 2013

Roads and Transport Recovery Function Case examples

Suite of projects set to commence on the Warrego Highway in 2013

(Downs South West Region, Maranoa Regional Council)

TMR is currently delivering the largest road works program in its history, following years of flooding and cyclone events.

With an exhaustive number of projects currently in construction across the State of Queensland, the works slow down the smooth flow of traffic, which is a hot topic for transport operators, industry representatives, and the rural and retail sector.

TMR's North Queensland Region takes a positive view of keeping motorists and heavy vehicle operators informed of roadworks within the region.

The Region's Traffic Management Centre (TMC) has developed a unique partnership arrangement with the local commercial and non-commercial radio stations to broadcast traffic updates in peak times, both in the morning and afternoon.

Each traffic report is delivered by local TMC staff. Importantly, the reports focus on getting a clear message to motorists that delays may be imminent through roadworks.

Collectively, each traffic report has a listening audience in excess of 150,000 listeners in north Queensland.

The reports identify traffic delays, highlight project works within the region and identify any expected delays.



Left to right: Superintendent Col Campbell, Bruce Bernhardt TMR Traffic System Coordinator, Darren Burgess, Zinc FM radio station, Dave Stretton, Zinc FM radio station, Inspector Cheryl Scanlon meet to discuss road closures and radio reports.

Keeping motorists informed through radio traffic updates in the North Queensland Region

(Home Hill in the South to Cardwell Range in the North and West to Charters Towers)

Works will ramp up this year on the Warrego Highway in south-west Queensland with a suite of projects set to commence between Roma and Mitchell. Works will be funded from a combination of NDRRA and Nation Building Program sources.

Projects which are fully or part-funded by NDRRA include pavement and rehabilitation works planned to start over the coming month on a 4km section of the Warrego Highway, 6km west of Roma, and works on a 9km section of the highway, 30km west of Roma which commenced in August 2012.

Additional contracts are expected to start or be carried out on the Roma to Mitchell section of the highway this year alone. In addition to this, two other major contracts are soon to be awarded for reconstruction works on the Warrego Highway between Mitchell and Charleville, and multiple contracts will be carried out in the Metropolitan and Darling Downs areas between Ipswich and Roma.

Key challenges of delivering roadworks on the Warrego Highway include managing multiple varying projects across two different regions as well as numerous contractors; travel time issues including traffic delays, driver fatigue and managing traveller expectations; wide load restrictions; and road user and road worker safety.

TMR is committed to managing these challenges and will work collaboratively across regions to ensure this commitment is met.

(Source: DTMR 6 March 2013)

5.3 Cyclone shelter project

In May 2011, a \$60 million fund was announced to construct 10 cyclone shelters and multi-purpose facilities in Central and North Queensland. The shelters are being funded by a gift of \$30 million from the Emirate of Abu Dhabi and a further \$30 million contribution by the Queensland Government. The new cyclone shelters will be active civic assets with multi-functional uses and capable of housing up to 800 people at a time in the event of a cyclone. The new cyclone shelter in Cairns incorporates a double basketball court in the facility and will be able to accommodate approximately 1,500 persons.

The Department of Housing and Public Works (DHPW) is facilitating management of the program over the two financial years of 2011-12 and 2012-13. The Authority is responsible for distributing and acquitting the funds against agreed milestones under the program and managing the ongoing liaison with the Emirate of Abu Dhabi.

Table 5.3.1 Cyclone Shelter Progress Status

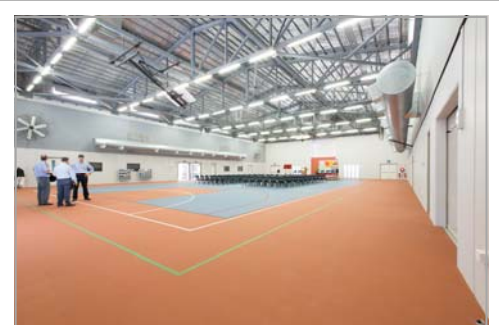
Cyclone shelter location	Delivery agency	Practical Completion Date	% Complete
Bowen SHS	DHPW	11 January 2013	100%
Heatley Secondary College, Townsville	DHPW	3 December 2012	100%
Ingham SHS	DHPW	19 December 2012	100%
Port Douglas SS	DHPW	21 December 2012	100%
Proserpine SHS	DHPW	20 December 2012	100%
Tully SS	DHPW	18 December 2012	100%
Weipa	DHPW	12 February 2013	100%
Yeppoon SHS	DHPW	14 November 2012	100%
Mackay, new SHS	DETE	24 December 2012	100%
Edmonton Leisure Centre, Cairns	Cairns Regional Council	April 2013	85%

The target completion date for the cyclone shelter projects was originally planned for November 2012 in time for the commencement of the cyclone season. The extended wet weather conditions and unforeseen latent conditions on some sites resulted in delays to several projects being managed by DHPW, in particular Proserpine, Port Douglas, Tully, Townsville, Ingham, Bowen and Weipa.

Despite the inclement weather conditions experienced during construction, all eight new cyclone shelters managed by DHPW have been completed.

The Mackay cyclone shelter, being managed by the Department of Education, Training and Employment, achieved practical completion on 24 December 2012. The Cairns Regional Council is managing the delivery of the Edmonton Leisure Centre Cyclone Shelter and is anticipated to be completed in April 2013. *(See Table 5.3.1 for the status of progress)*

(Source: DHPW 8 March 2013)



Above - Premier Campbell Newman and Sultan Abdulla Alyammahi - Chargé d'Affaires a.i., Embassy of the United Arab Emirates officially open the Tully cyclone shelter

Above: Inside the Tully State High School Cyclone Shelter.



At left: Recent photos of the completed Tully State High School Cyclone Shelter which officially opened on 19 February 2013.

5.4 Communications

The Authority is focused on building stakeholder confidence in the reconstruction by ensuring consistent and regular communication of public information.

5.4.1 Communicating progress

Media analysis - There have been a total of 421 reconstruction media items from 1 to 28 February 2013 (264 print, 30 TV and 127 radio) with the focus this month being the recovery and reconnection of communities following the aftermath of ex-Tropical Cyclone Oswald, and local Councils getting back on track with their reconstruction programs.

February included heavy media coverage predominately featured in those regions hardest hit by the 2013 flood event, such as the Bundaberg and Rockhampton Daily News, and the Queensland Times. However, there was also consistent coverage in the Cairns Post and the Tully Times as those regions not affected by Tropical Cyclone Oswald continued with their 2010/2011 reconstruction programs.

Engagement activities - The Authority is continuing to support those Local Government Authorities affected by ex-Tropical Cyclone Oswald through regular liaison with Councils and with the assistance of three **Disaster Recovery Coordinators. Colonel Don Cousins, Deputy Commissioner Brett Pointing and Brigadier Bill Mellor** will service the North Queensland, Bundaberg/North Burnett and Southern Queensland regions respectively.

Specialist finance and engineering staff from the Authority, supported by a team of data collectors, have been working hand in hand with Council managers and works supervisors to quickly assess the extent of damage to infrastructure in the hardest hit areas. This new and innovative approach continues to receive high praise from many Councils and other beneficiaries, and will enable quick processing of NDRRA claims so reconstruction work can begin. During February, teams were active in Bundaberg, North Burnett, and Lockyer Valley local government areas. Additionally, the Authority has provided senior staff on the ground to assist councils with advice and guidance in Hinchinbrook, Fraser Coast, Banana, Logan, Central Highland, Gladstone and Palm Island.

The road to more resilient communities has been mapped out with the release of the **Queensland 2013 Flood Recovery Plan**. The Recovery Plan provides strategic guidance for the coordination and management of recovery, reconstruction and community resilience activities undertaken by the Queensland State government, local governments, non-government partners, industry and not-for-profit organisations following the flood and damage impacts of Tropical Cyclone Oswald (TC Oswald). The **Queensland 2013 Flood Recovery Plan** is accessible via the Authority's website.

Communications - There are a number of methods available to the public to communicate with the Authority.

The Authority's website provides information to the public and continues to be enhanced with ongoing updates, including the launch of the public Flood Information Portal. There have been a large number of visits to the website since it was launched on 18 February 2011. At 28 February 2013, total visits amounted to 293,332 - an increase of 5% since last month. *(See Figure 5.4.1)*

In February, the Authority received an additional 228 calls to its dedicated hotline and 359 additional pieces of written correspondence were received. *(See Figure 5.4.2)*

Fig. 5.4.1 Website traffic

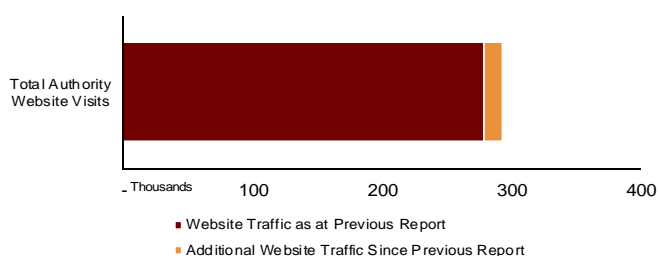
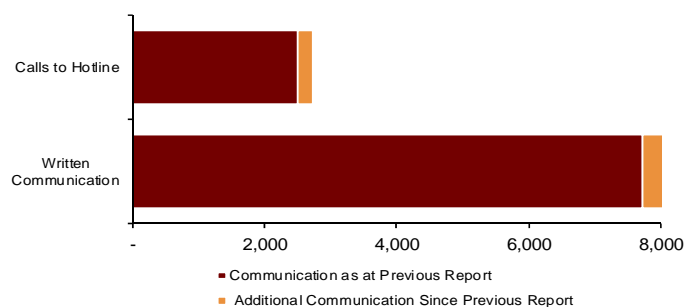


Fig. 5.4.2 Communications



(Source: the Authority at 28 February 2013)

5.4.2 Media reports

Isis Country, 7 February 2013

Bridge is damaged again

WATER damage to the bridge on the Isis River in Isis Country, Queensland, has been described as a 'catastrophe'. The bridge, which was damaged by Cyclone Yasi, was again damaged by heavy rain on Monday. The Queensland Government has promised to repair the bridge as soon as possible. The bridge is a vital link between Isis Country and the rest of Queensland.



IT'S ASIDE: The bridge at Isis River, Queensland, which was damaged by heavy rain on Monday.

Satellite, Brisbane, 6 February 2013

Connecting communities

Berambawa is embarking on a project to help foster togetherness in Graceville

BY KYLE BIRNBAUM
WHAT do you do about your community? For some, the answer is to connect. Berambawa is embarking on a project to help foster togetherness in Graceville. The project involves creating a community garden and a community center. The project is being led by a group of volunteers who are passionate about their community. The project is expected to be completed by the end of the year.



THE GARDEN: A group of people, including children and adults, participating in a community garden project in Graceville.

Innisfail Advocate, 20 February 2013

Shelter port in severe storm

IT'S an asset that Tully locals hope they will never see but if a severe for weather event of Cyclone Yasi intensity again struck the Tully State School, which will make the school a safe haven for the community. The school is a major asset for the Tully community and the school is a major asset for the community. The school is a major asset for the community and the school is a major asset for the community.



THE SCHOOL: A person standing in front of a building, possibly a school, in Tully.

Queensland Times, 4 February 2013

New \$2.4m bowls club handed over at Goodna

THE new \$2.4 million Goodna bowls club has been handed over to the Queensland Bowls Association. The club is a major asset for the community and the club is a major asset for the community. The club is a major asset for the community and the club is a major asset for the community.



THE CLUB: A group of people, including children and adults, participating in a community garden project in Goodna.

Cairns Post, 1 February 2013

Yasi recovery work is only halfway there

THE agenda of what happens, he said. "It's incredibly spending to the community." He said that the work is only halfway there. The work is only halfway there. The work is only halfway there. The work is only halfway there.



THE YASI: A person standing in front of a building, possibly a school, in Cairns.

Innisfail Advocate, 13 February 2013

Clump Pt jetty work starts

WORK will begin on the new Clump Pt jetty at Mission Beach next week. The jetty is a major asset for the community and the jetty is a major asset for the community. The jetty is a major asset for the community and the jetty is a major asset for the community.



DRIVING FORCE: Construction work on a jetty at Clump Pt.

Stanthorpe Border Post, 20 February 2013

Category D assistance available to flood victims in the Southern Downs

FOLLOWING the January floods Southern Downs Regional Council is pleased to announce the activation of Category D Measures Natural Disaster Relief and Recovery Arrangements. Activated by the federal and state governments it means primary producers, businesses and not-for-profit organisations in target areas of the Southern Downs who have suffered extreme flood damage will be able to access a loan and grant package of up to \$650,000 under the Exceptional Disaster Assistance Scheme. Eligible areas include the area east of Keoghs Rd, Old Stanthorpe Rd, New England Hwy to where it joins Cunningham Hwy and north or Cunningham Hwy and east of the Warwick-Pratten Rd. For more information on the EDAS phone Queensland Rural Adjustment Authority on 1800 823 946 or visit qraa.qld.gov.au. Assistance is also available at disasterassist.gov.au and qld.gov.au/community/disasters-emergencies/recovery-after-disaster/.

Queensland Country Life, 7 February 2013

Category C grants are welcome news

COMMENT Queensland Country Life has been on the case to get the Queensland Government to activate Category C grants. The grants are a major asset for the community and the grants are a major asset for the community. The grants are a major asset for the community and the grants are a major asset for the community.



THE GRANTS: A person standing in front of a building, possibly a school, in Queensland.

Our Selection, 7 February 2013

TRC flood damage bill an estimated at \$50 million

Toowoomba Regional Council (TRC) faces a mammoth task of repairing damages to roads and infrastructure throughout the region as a result of the Australia Day weekend floods. Infrastructure Committee chair Cr Carol Taylor said more time was needed to accurately assess the damage to the region's 10,000 kilometre road network. "This figure - \$40 to \$50 million - is a guesstimate of the damage at this stage," she said. "Over coming months, Council will work closely with the Queensland Reconstruction Authority to firm up the reconstruction costs." The State's declaration of ex-Tropical Cyclone Oswald as a natural disaster means that the TRC can apply for Natural Disaster Relief and Recovery Arrangements (NDRRA) funding.

News Mail, 14 February 2013

Category D relief

THE Queensland Government is seeking to activate Category D help under the National Disaster Relief and Recovery Arrangements for areas worst hit by floods including the Bundaberg region. The category D assistance was offered to regions affected by Cyclone Yasi in 2011 where eligible businesses and primary producers had access to concessional loans of up to \$650,000. Deputy Premier Jeff Seeney said Category D help would be critical for the economical recovery.

Appendices



Appendix A: Queensland Disaster Assistance Framework

The available Queensland Disaster Assistance schemes are separated between NDRRA (jointly funded by the Commonwealth and State governments) and Non-NDRRA funding allocation. For reporting purposes, the schemes are divided into the sections outlined below.

Grant Assistance Available for Queensland Disasters		
	NDRRA	Non-NDRRA
Individuals and families	Personal Hardship and Assistance Scheme (PHAS) Emergent Assistance Grants (EAS) Essential Household Contents Grants (EHCG) Structural Assistance Grants (SAG) Essential Services and Safety Reconnection (ESSR) Safety Inspections Repairs	Premier's Disaster Relief Appeal Australian Government Disaster Recovery Payments (AGDRP)
Local Governments, State Departments and Agencies	Counter Disaster Operations (CDO) Restoration of Essential Public Assets (REPA) Queensland Local Council Package (QLCP)	
Small Businesses, Primary Producers and Charities and Non-Profit Groups	Concessional Loans Grants Freight Subsidies for Primary Producers Rural Resilience Fund Operation Clean-up Special Disaster Assistance Loans to Charities and Non-Profit Organisations Exceptional Concessional Loans	Disaster Income Recovery Subsidies Cyclone Yasi Wage Assistance Sport Flood Fight Back Scheme Tourism Industry Support Package Queensland Natural Disaster Jobs and Skills Package Racetrack Recovery Assistance Flood Recovery Program QLD Flood and Cyclone Legal Help

Disaster event periods managed by the Authority:

This report includes references to the event periods as listed above. Each event period has been described in the report as follows:

2012-2013: Activated disaster events managed by the Authority from **November 2012 to April 2013**

2011-2012: Activated disaster events managed by the Authority from **August 2011 to March 2012**.

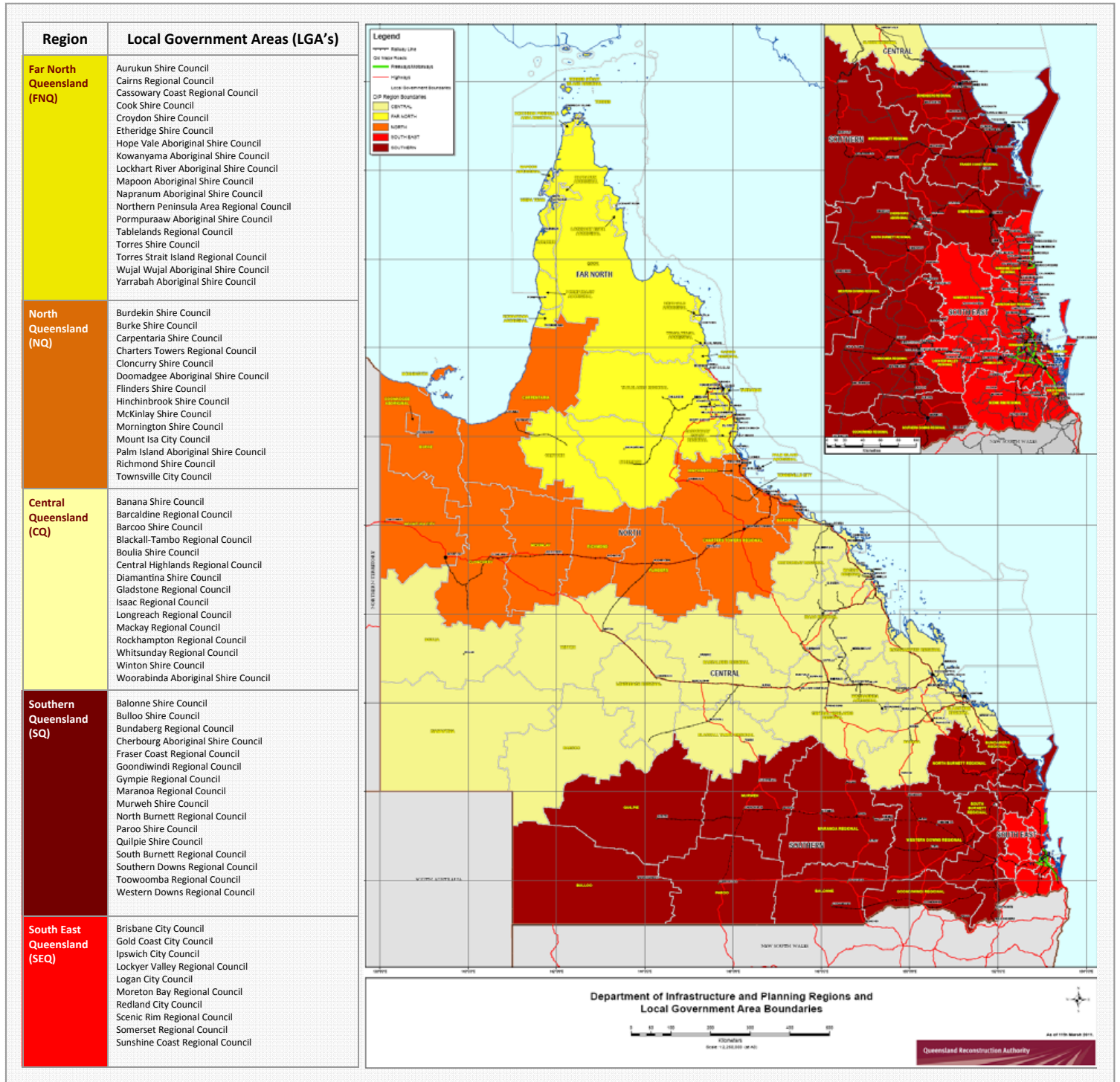
2010-2011: Activated disaster events managed by the Authority from **November 2010 to April 2011**
 including Tropical Cyclone Yasi and Queensland flooding (November 2010 to February 2011).

2009-2010: Activated disaster events managed by the Authority prior to November 2010.

Combined Program—relates to all the activated disaster event programs managed by the Authority.

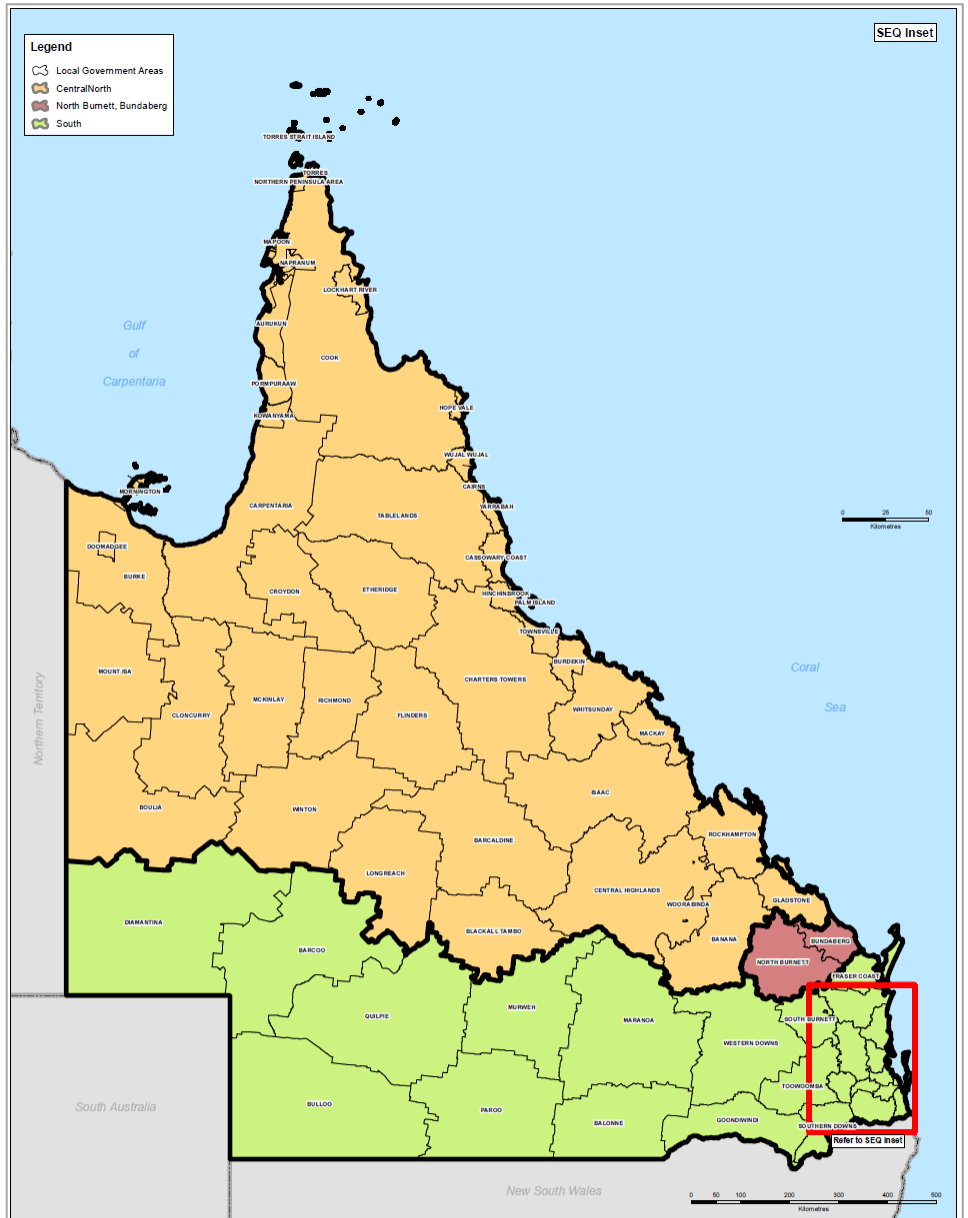
The list of the activated disaster events can be found on www.disaster.qld.gov.au.

Appendix B: Local Government Areas by Region



Appendix C: Disaster Recovery Regions - Tropical Cyclone Oswald

Region	Local Government Areas (LGA's)
Northern Queensland	Aurukun Shire Council
	Banana Shire Council
	Barcaldine Regional Council
	Blackall-Tambo Regional Council
	Boulia Shire Council
	Burdekin Shire Council
	Burke Shire Council
	Carpentaria Shire Council
	Cairns Regional Council
	Cassowary Coast Regional Council
	Central Highlands Regional Council
	Charters Towers Regional Council
	Cloncurry Shire Council
	Cook Shire Council
	Croydon Shire Council
	Doomadgee Aboriginal Shire Council
	Etheridge Shire Council
	Flinders Shire Council
	Gladstone Regional Council
	Hinchinbrook Shire Council
	Hope Vale Aboriginal Shire Council
	Isaac Regional Council
	Kowanyama Aboriginal Shire Council
	Lockhart River Aboriginal Shire Council
	Longreach Regional Council
	Mackay Regional Council
	Mapoon Aboriginal Shire Council
	McKinlay Shire Council
	Mornington Shire Council
	Mount Isa City Council
	Napranum Aboriginal Shire Council
	Northern Peninsula Area Regional Council
	Palm Island Aboriginal Shire Council
	Pormpuraaw Aboriginal Shire Council
	Richmond Shire Council
	Rockhampton Regional Council
	Tablelands Regional Council
	Torres Shire Council
	Torres Strait Island Regional Council
	Townsville City Council
	Whitsunday Regional Council
	Winton Shire Council
	Woorabinda Aboriginal Shire Council
	Wujal Wujal Aboriginal Shire Council
	Yarrabah Aboriginal Shire Council
Bundaberg/ North Burnett	Bundaberg Regional Council
	North Burnett Regional Council
Southern Queensland	Balonne Shire Council
	Brisbane City Council
	Bulloo Shire Council
	Barcoo Shire Council
	Cherbourg Aboriginal Shire Council
	Diamantina Shire Council
	Fraser Coast Regional Council
	Gold Coast City Council
	Goondiwindi Regional Council
	Gympie Regional Council
	Ipswich City Council
	Lockyer Valley Regional Council
	Logan City Council
	Maranoa Regional Council
	Moreton Bay Regional Council
	Murweh Shire Council
	Paroo Shire Council
	Quilpie Shire Council
	Redland City Council
	Scenic Rim Regional Council
	Somerset Regional Council
	South Burnett Regional Council
	Southern Downs Regional Council
	Sunshine Coast Regional Council
	Toowoomba Regional Council
Western Downs Regional Council	



Queensland Local Government Areas Disaster Recovery Coordinator Regions

As at 7 March 2013

Queensland Reconstruction Authority

Definitions:
 Northern Queensland: Aurukun Shire Council, Banana Shire Council, Barcaldine Regional Council, Blackall-Tambo Regional Council, Boulia Shire Council, Burdekin Shire Council, Burke Shire Council, Carpentaria Shire Council, Cairns Regional Council, Cassowary Coast Regional Council, Central Highlands Regional Council, Charters Towers Regional Council, Cloncurry Shire Council, Cook Shire Council, Croydon Shire Council, Doomadgee Aboriginal Shire Council, Etheridge Shire Council, Flinders Shire Council, Gladstone Regional Council, Hinchinbrook Shire Council, Hope Vale Aboriginal Shire Council, Isaac Regional Council, Kowanyama Aboriginal Shire Council, Lockhart River Aboriginal Shire Council, Longreach Regional Council, Mackay Regional Council, Mapoon Aboriginal Shire Council, McKinlay Shire Council, Mornington Shire Council, Mount Isa City Council, Napranum Aboriginal Shire Council, Northern Peninsula Area Regional Council, Palm Island Aboriginal Shire Council, Pormpuraaw Aboriginal Shire Council, Richmond Shire Council, Rockhampton Regional Council, Tablelands Regional Council, Torres Shire Council, Torres Strait Island Regional Council, Townsville City Council, Whitsunday Regional Council, Winton Shire Council, Woorabinda Aboriginal Shire Council, Wujal Wujal Aboriginal Shire Council, Yarrabah Aboriginal Shire Council.
 Bundaberg/North Burnett: Bundaberg Regional Council, North Burnett Regional Council.
 Southern Queensland: Balonne Shire Council, Brisbane City Council, Bulloo Shire Council, Barcoo Shire Council, Cherbourg Aboriginal Shire Council, Diamantina Shire Council, Fraser Coast Regional Council, Gold Coast City Council, Goondiwindi Regional Council, Gympie Regional Council, Ipswich City Council, Lockyer Valley Regional Council, Logan City Council, Maranoa Regional Council, Moreton Bay Regional Council, Murweh Shire Council, Paroo Shire Council, Quilpie Shire Council, Redland City Council, Scenic Rim Regional Council, Somerset Regional Council, South Burnett Regional Council, Southern Downs Regional Council, Sunshine Coast Regional Council, Toowoomba Regional Council, Western Downs Regional Council.
 Note: Refer to NDRRA Activation Summary for further boundary classifications.

